



identity

ARCHITECTS

# HEALTHCARE PROJECTS

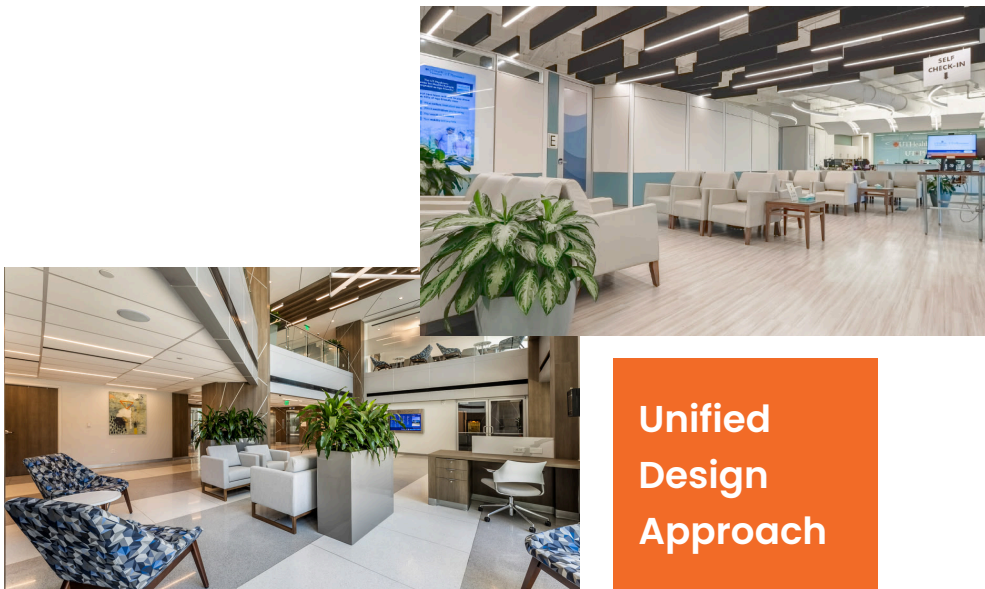
Architecture • Interiors • Master Planning • Design-Build • Construction Management

## HEALTHCARE PROJECT EXPERIENCE

- Urgent Care Clinics
- Family Medicine / Primary Care Offices
- Specialty Clinics (dermatology, cardiology, oncology, etc.)
- Dental and Oral Surgery Clinics
- Dialysis Clinics
- Imaging and Diagnostic Centers (MRI, CT, X-ray)
- Rehabilitation and Physical Therapy Facilities
- Women's Health Centers / OB-GYN Practices
- Fertility Clinics
- Memory Care Facilities
- Wellness and Preventive Care Centers
- Mental Health and Behavioral Health Facilities
- Medical Office Buildings (MOBs)
- Research and Teaching Facilities
- Pharmacies and Lab Spaces
- Administrative Offices within Healthcare Campuses
- Staff Support Areas (nurse stations, lounges, training rooms)

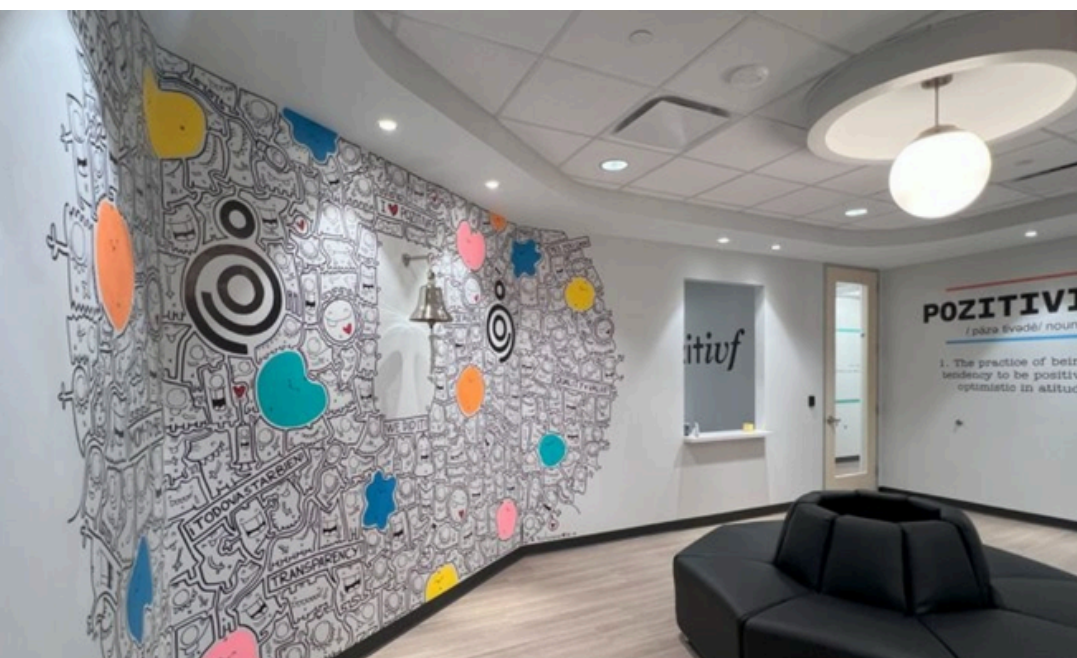
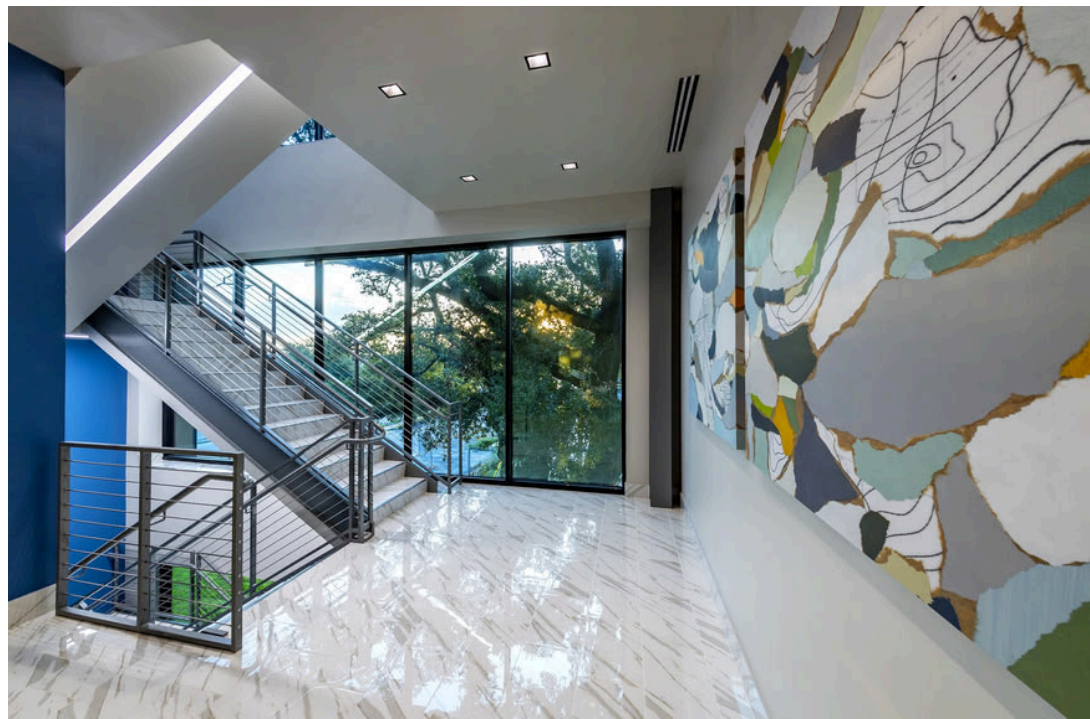
## HEALTHCARE INTERIOR SERVICES

- Interior Architecture
- Space Analysis & Evaluation
- Test Fit and Space Planning
- Finish and Color Selection
- Programming
- Speculative Suite Design
- Interior Design
- Regulatory Compliance Review
- Visualization / Renderings
- Construction Administration
- Fixture, Furniture, Equipment Coordination



Unified  
Design  
Approach

Partnering with our team means transforming your vision into impactful, brand-driven interiors that leave a memorable impression. We deliver creative, functional solutions tailored to your goals, enhancing the user experience, reinforcing your brand identity, and bringing every detail to life.



PROJECT

**identity**  
ARCHITECTS

SUGAR LAND, TX



Creating Spaces That Tell Your Story

# EDLOE HEALTH

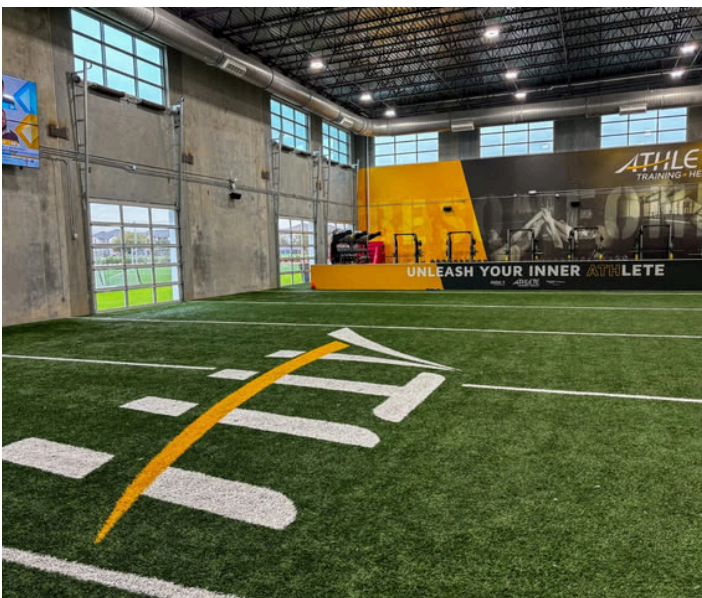


Our Identity team was proud to collaborate with Edloe Ventures on the design development and construction management of this multi-tenant medical office building. Our scope included the design and development of the building shell, as well as the interior build-out of the Edloe Health Imaging clinic, and Edloe Health Corporate offices. Our team managed the construction and construction oversight for both the exterior shell and clinic interior, ensuring seamless execution from concept to completion.



Where Healthcare & Convenience Meet

# MEMORIAL HERMANN ATH



This dual-purpose facility combines modern medical office design with a high-functioning corporate headquarters. Expansive storefront glazing brings in natural light, while dark porcelain-clad entry towers and angular brick elements create a strong, contemporary exterior aligned with the client's brand and long-term goals.

Inside, the layout supports both clinical and administrative functions with efficient, adaptable space planning. The corporate headquarters includes private offices, open workstations, flexible meeting rooms, and comfortable break areas—promoting productivity and collaboration.



Healthcare that feels welcoming

# MAGNOLIA MEDICAL SPECIALISTS



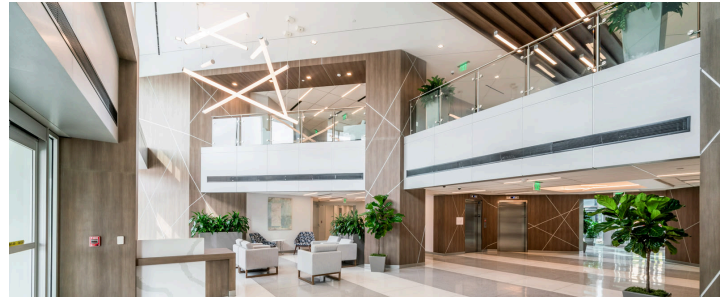
Early client engagement & extensive visioning allowed this unique 53,000 SF medical office project to get off the ground & running at a solid pace. Unique to this project (compared to typical medical office developments), was an adjacent 9,000SF retail shopping center - helping establish this mixed used development.

Early involvement allows for strategic planning - particularly from a leasing perspective - to ensure proper placement of common areas & ideal suite dimensions. This approach aligns the design with the client's vision and reduces the risk of costly change orders and delays, demonstrating that early engagement drives real ROI.

PROJECT

**identity**  
ARCHITECTS

HOUSTON, TX



Where hospital meets hospitality

## WEST MEDICAL ONE



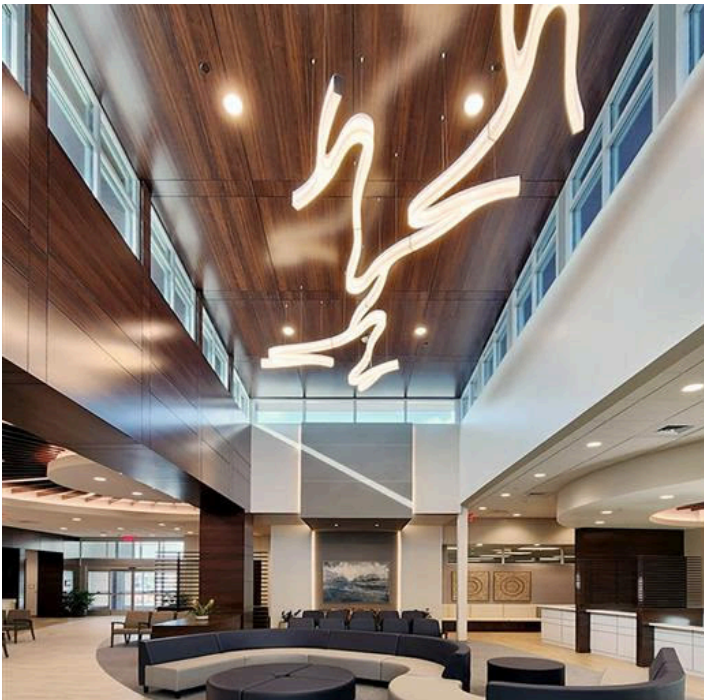
This 169,000 SF four story medical office was completely transformed through renovation into a high-performance sports medicine clinic, meticulously crafted to meet the exacting demands of specialized treatment and rehabilitation. Responding to the rapidly changing patient experience that is expected of modern healthcare facilities; Healthpeak properties and the Identity team designed an improved sense of place appealing to all building users with a more hospitality-driven environment.

Inspired by the client's vision, the design flows seamlessly melding treatment zones, clinical support, and administrative spaces into a patient-focused experience. Every element is purposefully crafted to enhance movement, healing, and peak performance. Clean lines and refined, durable materials shape a space that's both professional and inviting. Thoughtful circulation paths guide effortless navigation, creating an energized environment where patients can recover, and thrive.



Shaping a Patient Centered 27 acre Healthcare Campus

# SOUTH TEXAS BONE & JOINT



This meticulously designed 35,000 SF medical office anchors a thoughtfully curated 27 acre mixed use healthcare campus.

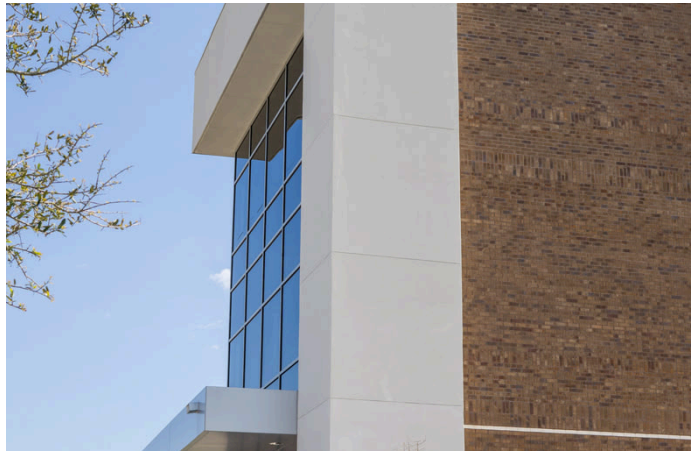
Seamlessly blending cost-effective tilt-wall construction with a high performance clinical environment, the building's sleek, single story form offers enduring flexibility and operational excellence. Designed to enhance patient experience with warm and inviting interiors and streamlined care delivery, it stands as a bold statement of innovation and community-focused healthcare. Every aspect, from site layout to interior finishes, embodies a harmonious balance of form and function, creating lasting value and a vibrant sense of place.

# identity

ARCHITECTS

## EXCEPTIONAL HEALTHCARE ARCHITECTURE HAS THE PATIENT FRONT-OF-MIND

At Identity Architects, we pride ourselves on designing meaningful spaces that bring people together. This philosophy drives every project we undertake, strengthening the many communities we serve.



When you choose Identity Architects, you're selecting a team that proactively solves for multiple design challenges, one after another. We care about the details, protect your budget, and deliver a finished product you will be proud of. Partner with our healthcare design team who understands not just how to design—but why it matters.

## Let's Design What's Next – Together



(713)595 2150



kr@identityarchitects.com





www.identityarchitects.com

# identity

ARCHITECTS

 Identity Architects

 identity\_architects

 Identity Architects