

City: Lemont

Agent Name

Title
Phone
Website
Other



Price Range: All | Properties: SFH - Condo - Twn

Market Profile & Trends Overview

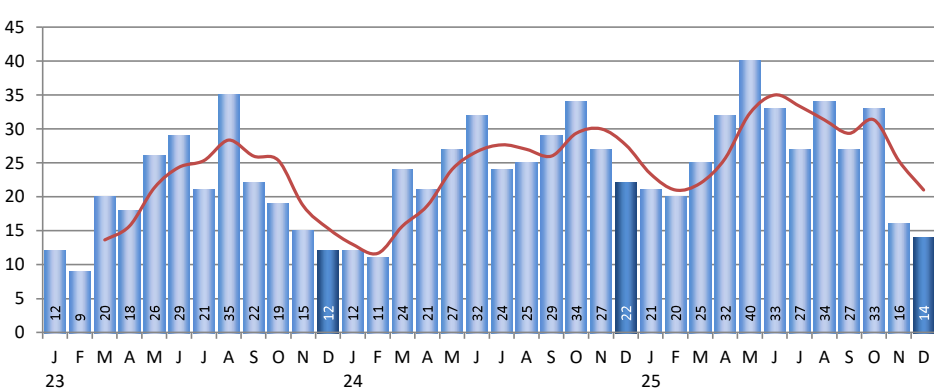
	Month	Trending versus*:				YTD	Trending versus*:	
		LM	L3M	PYM	LY		Prior YTD	Prior Year
Median List Price of all Current Listings	\$624,175	-0%		2%				
Average List Price of all Current Listings	\$718,251	-4%		11%				
December Median Sales Price	\$645,590	3%	5%	-1%	12%	\$600,000	4%	4%
December Average Sales Price	\$774,455	25%	22%	17%	31%	\$611,054	2%	3%
Total Properties Currently for Sale (Inventory)	56	-11%		-14%				
December Number of Properties Sold	14	-13%		-36%		322	12%	
December Average Days on Market (Solds)	25	0%	19%	-11%	0%	31	24%	24%
Asking Price per Square Foot (based on New Listings)	\$241	-9%	-10%	1%	-4%	\$258	4%	3%
December Sold Price per Square Foot	\$285	5%	5%	28%	17%	\$250	2%	3%
December Month's Supply of Inventory	4.0	2%	21%	35%	26%	2.6	-19%	-19%
December Sale Price vs List Price Ratio	99.7%	1.0%	.9%	3.6%	1.0%	99.3%	1%	1%

* LM=Last Month / L3M=Last 3 Months / PYM=Same Month Prior Year / LY=Last Year (2024) / YTD = Year-to-date

Property Sales

December Property sales were 14, down 36.4% from 22 in December of 2024 and 12.5% lower than the 16 sales last month. December 2025 sales were at a mid level compared to December of 2024 and 2023. December YTD sales of 322 are running 11.8% ahead of last year's year-to-date sales of 288.

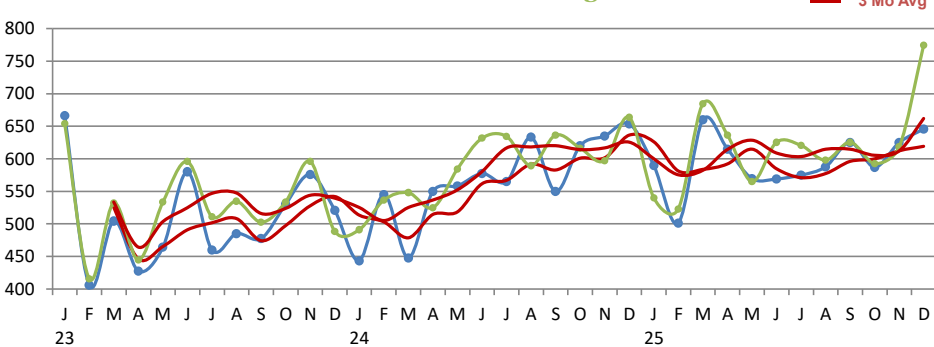
Number of Properties Sold



Prices

The Median Sales Price in December was \$645,590, down 1.2% from \$653,500 in December of 2024 and up 3.3% from \$625,000 last month. The Average Sales Price in December was \$774,455, up 16.7% from \$663,524 in December of 2024 and up 25.2% from \$618,458 last month. December 2025 ASP was at the highest level compared to December of 2024 and 2023.

Median Sales Price and Average Sales Price

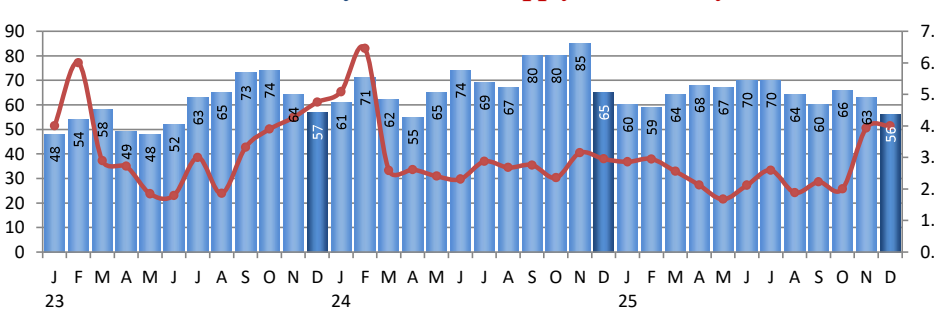


Inventory & MSI

The Total Inventory of Properties available for sale as of December was 56, down 11.1% from 63 last month and down 13.8% from 65 in December of last year. December 2025 Inventory was at its lowest level compared with December of 2024 and 2023.

A comparatively lower MSI is more beneficial for sellers while a higher MSI is better for buyers. The December 2025 MSI of 4.0 months was at a mid level compared with December of 2024 and 2023.

Total Inventory & Month's Supply of Inventory (MSI)



City: *Lemont*

Agent Name

Title
Phone
Website
Other

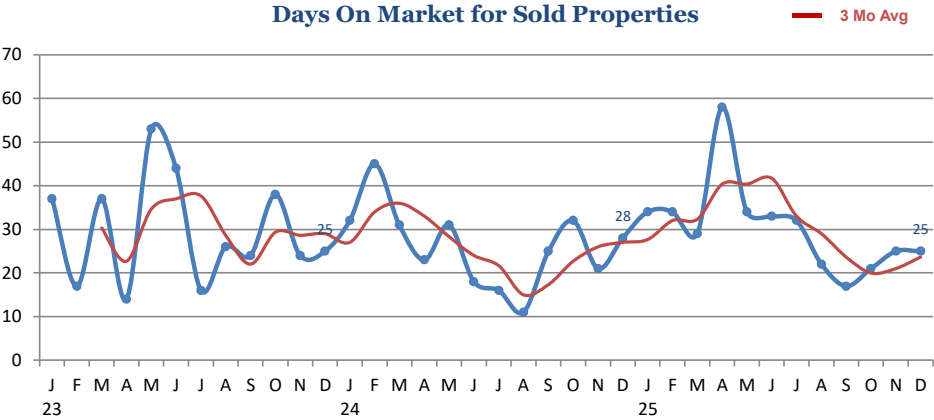


Price Range: All | Properties: SFH - Condo - Twn

Market Time

The average Days On Market (DOM) shows how many days the average Property is on the market before it sells. An upward trend in DOM tends to indicate a move towards more of a Buyer's market, a downward trend a move towards more of a Seller's market. The DOM for December was 25, equal to 25 days last month and down 10.7% from 28 days in December of last year. The December 2025 DOM was at its lowest level compared with December of 2024 and 2023.

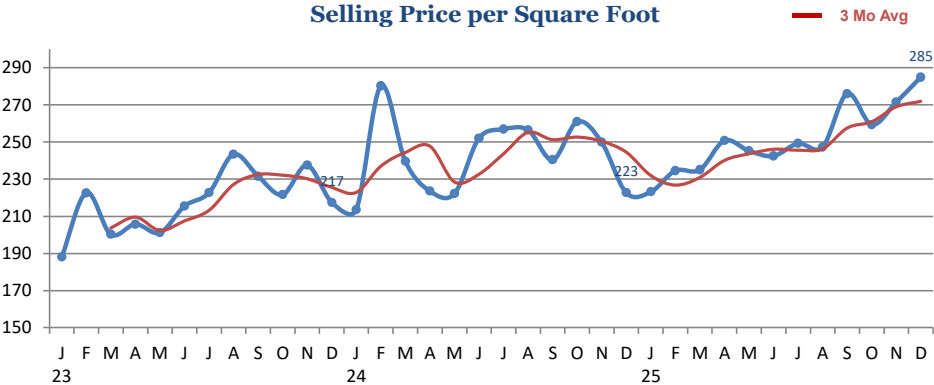
Days On Market for Sold Properties



Selling Price per Square Foot

The Selling Price per Square Foot is a great indicator for the direction of Property values. Since Median Sales Price and Average Sales price can be impacted by the 'mix' of high or low end Properties in the market, the selling price per square foot is a more normalized indicator on the direction of Property values. The December 2025 Selling Price per Square Foot of \$285 was up 4.9% from \$271 last month and up 27.9% from 223 in December of last year.

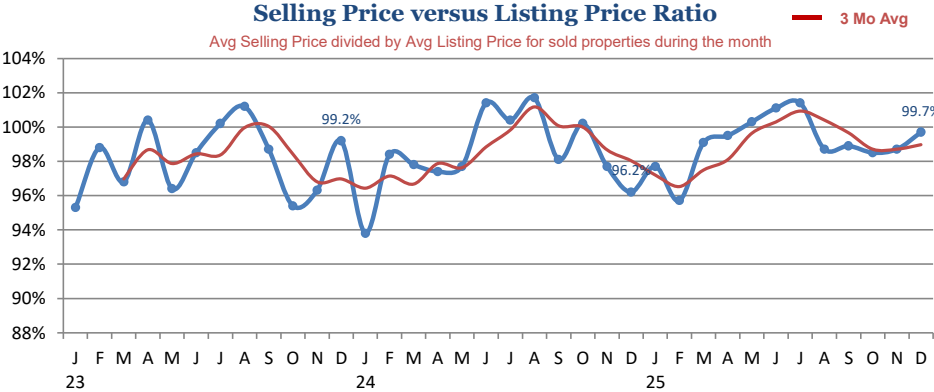
Selling Price per Square Foot



Selling Price vs Original Listings Price

The Selling Price vs Original Listing Price reveals the average amount that Sellers are agreeing to come down from their original list price. The lower the ratio is below 100% the more of a Buyer's market exists, a ratio at or above 100% indicates more of a Seller's market. The December 2025 Selling Price vs Original List Price of 99.7% was up from 98.7% last month and up from 96.2% in December of last year.

Selling Price versus Listing Price Ratio



Inventory / New Listings / Sales

This last view of the market combines monthly inventory of Properties for sale along with New Listings and Sales. The graph shows the basic annual seasonality of the market as well as the relationship between these items. The number of New Listings in December 2025 was 23, equal to 23 last month and up 35.3% from 17 in December of last year.

Inventory / New Listings / Sales



Inventory / Listings / Sales

City: *Lemont*

December 2025



Agent Name

Title

Phone

Website

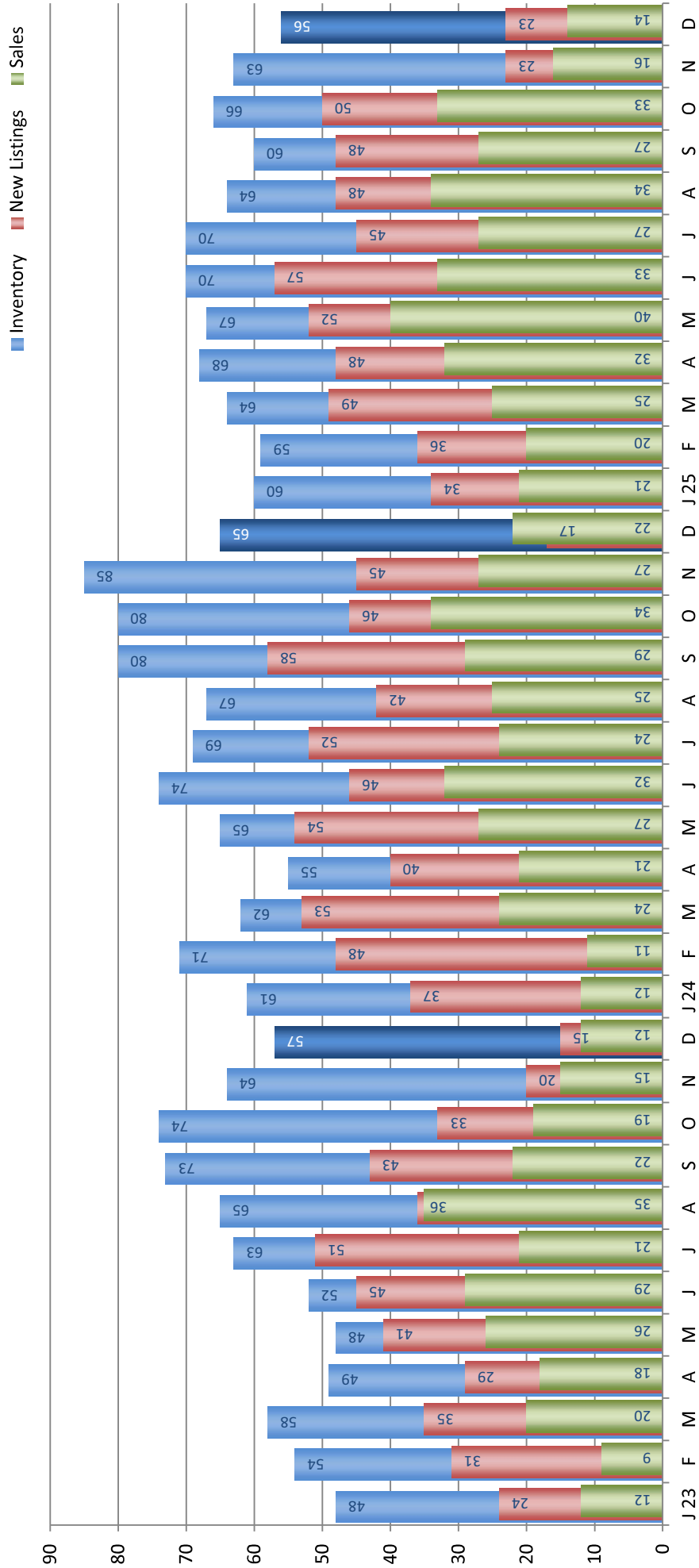
Other



Price Range: All | Properties: SFH - Condo - Twn

Inventory / New Listings / Sales

This last view of the market combines monthly inventory of Properties for sale along with New Listings and Sales. The graph shows the basic annual seasonality of the market as well as the relationship between these items. The number of New Listings in December 2025 was 23, equal to 23 last month and up 35.3% from 17 in December of last year.



Copyright © Coldwell Banker Residential Brokerage | Price Range: All | Property Types: SFH - Condo - Twn

Data is provided courtesy of Midwest Real Estate Data LLC and may not reflect all relevant real estate activity. Coldwell Banker Residential Brokerage does not warrant or guarantee the accuracy of this information. It is the responsibility of any buyer or seller to verify any and all information relevant to such consumer's real estate transaction.