



Each office independently owned and operated

RE/MAX SUCCESS - KIRK ATAMIAN

501 North E St, Suite H

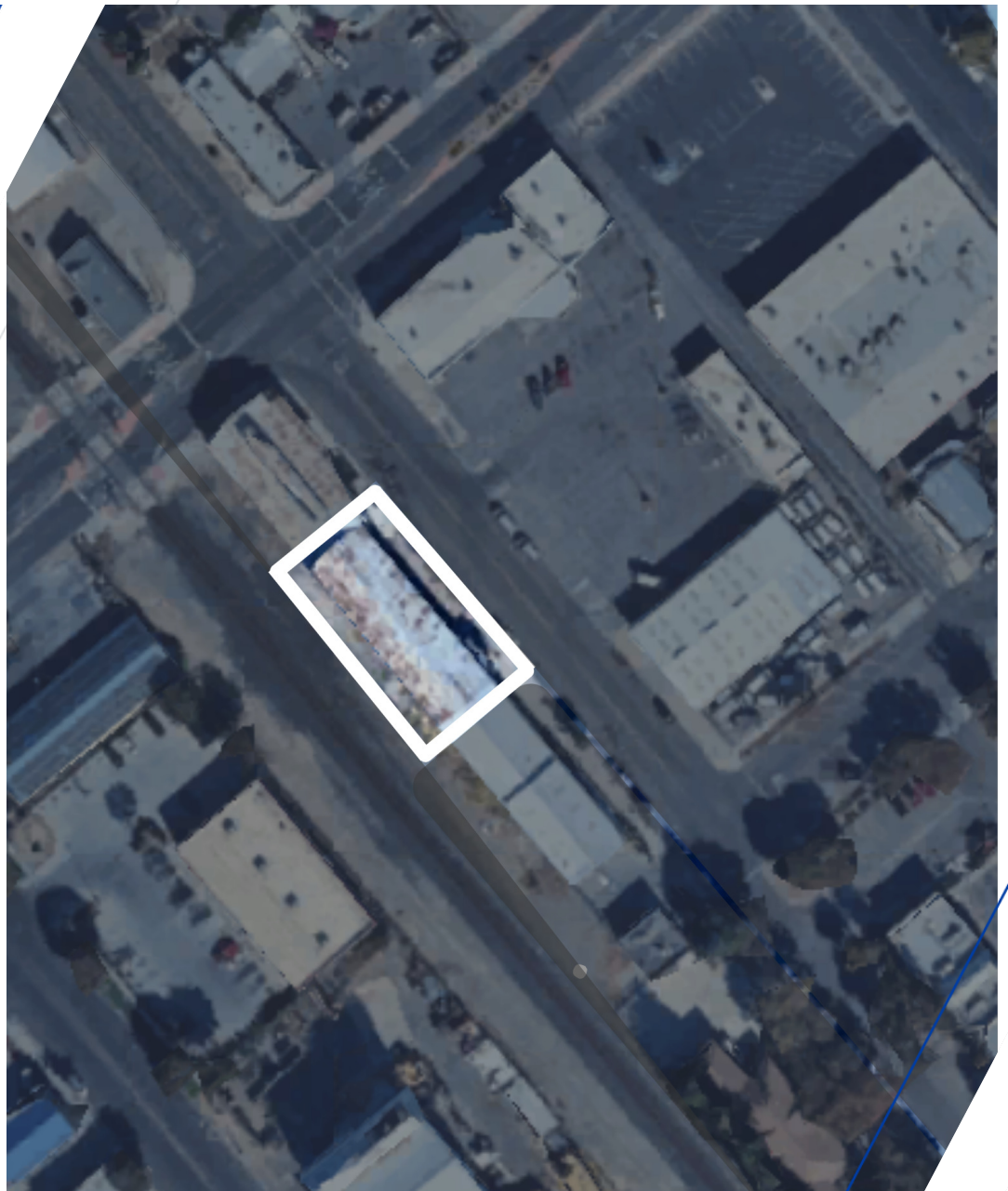
Madera, CA 93638

FOR SALE

INDUSTRIAL PROPERTY

216 NORTH E STREET

MADERA, CA 93638



PRESENTED BY:

KIRK ATAMIAN

Commercial Specialist

559.246.0000

CalDRE #02127378

TABLE OF CONTENTS

TABLE OF CONTENTS

PROPERTY INFORMATION	3
PROPERTY SUMMARY	4
PROPERTY DESCRIPTION	5
LOCATION INFORMATION	6
REGIONAL MAP	7
LOCATION MAP	8
AERIAL MAP	9
DEMOGRAPHICS	10
DEMOGRAPHICS MAP & REPORT	11
ADVISOR BIOS	12

CONFIDENTIALITY & DISCLAIMER

The information contained in the following offering memorandum is proprietary and strictly confidential. It is intended to be reviewed only by the party receiving it from Re/Max Success - Kirk Atamian and it should not be made available to any other person or entity without the written consent of Re/Max Success - Kirk Atamian.

By taking possession of and reviewing the information contained herein the recipient agrees to hold and treat all such information in the strictest confidence.

The recipient further agrees that recipient will not photocopy or duplicate any part of the offering memorandum. If you have no interest in the subject property, please promptly return this offering memorandum to Re/Max Success - Kirk Atamian.

This offering memorandum has been prepared to provide summary, unverified financial and physical information to prospective purchasers, and to establish only a preliminary level of interest in the subject property.

The information contained herein is not a substitute for a thorough due diligence investigation.

Re/Max Success - Kirk Atamian has not made any investigation, and makes no warranty or representation with respect to the income or expenses for the subject property, the future projected financial performance of the property, the size and square footage of the property and improvements, the presence of absence of contaminating substances, PCBs or asbestos, the compliance with local, state and federal regulations, the physical condition of the improvements thereon, or financial condition or business prospects of any tenant, or any tenant's plans or intentions to continue its occupancy of the subject property.

The information contained in this offering memorandum has been obtained from sources we believe reliable; however, Re/Max Success - Kirk Atamian has not verified, and will not verify, any of the information contained herein, nor has Re/Max Success - Kirk Atamian conducted any investigation regarding these matters and makes no warranty or representation whatsoever regarding the accuracy or completeness of the information provided.

All potential buyers must take appropriate measures to verify all of the information set forth herein.

Prospective buyers shall be responsible for their costs and expenses of investigating the subject property.

FOR SALE
INDUSTRIAL PROPERTY

P. 2

1

PROPERTY INFORMATION

IN THIS SECTION

PROPERTY SUMMARY

PROPERTY DESCRIPTION

PROPERTY SUMMARY



PROPERTY HIGHLIGHTS

- Downtown Madera industrial location
- Retail/office storefront plus warehouse space
- Ideal for owner-user or investor
- Flexible layout for multiple business types
- Suitable for storage, distribution, contractors, or light manufacturing
- Easy access to Highway 99 and regional transportation routes
- Value-add potential through improvements or repositioning
- High-demand small-bay industrial product type

OFFERING SUMMARY

Sale Price:	\$349,000
Lot Size:	0.15 Acres
Building Size:	5,216 SF
NOI:	\$0.00
Cap Rate:	0.0%

DEMOGRAPHICS	0.25 MILES	0.5 MILES	1 MILE
Total Households	284	1,506	5,635
Total Population	1,090	5,580	20,559
Average HH Income	\$52,832	\$53,226	\$67,303

FOR SALE
INDUSTRIAL PROPERTY

RE/MAX SUCCESS - KIRK ATAMIAN
Each office independently owned and operated

501 North E St, Suite H
Madera, CA 93638

PROPERTY DESCRIPTION



PROPERTY DESCRIPTION

Value-Add Downtown Madera Warehouse with Retail/Office – Owner-User or Investment Opportunity. Rare opportunity to acquire a value-add industrial property in the Downtown Madera core. The building features a functional combination of street-front retail/office space and a larger warehouse area, making it ideal for owner-users, contractors, distributors, service businesses, or investors seeking repositioning potential. The front portion offers customer-facing office or showroom space with strong visibility, while the rear warehouse provides open, usable industrial area suitable for storage, light manufacturing, e-commerce fulfillment, or trade operations. The flexible layout supports a wide range of commercial and industrial uses. Strategically located near major corridors with convenient access to Highway 99, the property allows efficient movement of goods throughout Madera, Fresno, and the Central Valley. Its downtown setting provides proximity to services, labor, and local business activity. This is a true value-add asset with upside through renovation, lease-up, or owner occupancy.

LOCATION DESCRIPTION

Immerse yourself in the thriving industrial landscape surrounding this premier location in Madera, CA. Strategically situated near major transportation arteries like Highway 99 and the Madera Municipal Airport, the area provides seamless access to critical logistics and distribution channels, catering to the needs of industrial and manufacturing investors. The nearby Madera Municipal Golf Course offers a tranquil retreat for leisure activities, while the Madera District Fair presents engaging opportunities for community involvement. With a robust economy and a supportive business community, the location sets a compelling stage for industrial and manufacturing ventures to prosper and expand. Explore the multitude of resources and opportunities available in the Madera area, ideal for driving industrial and manufacturing investment success.

FOR SALE
INDUSTRIAL PROPERTY

RE/MAX SUCCESS - KIRK ATAMIAN
Each office independently owned and operated

P. 5

501 North E St, Suite H
Madera, CA 93638

2

LOCATION INFORMATION

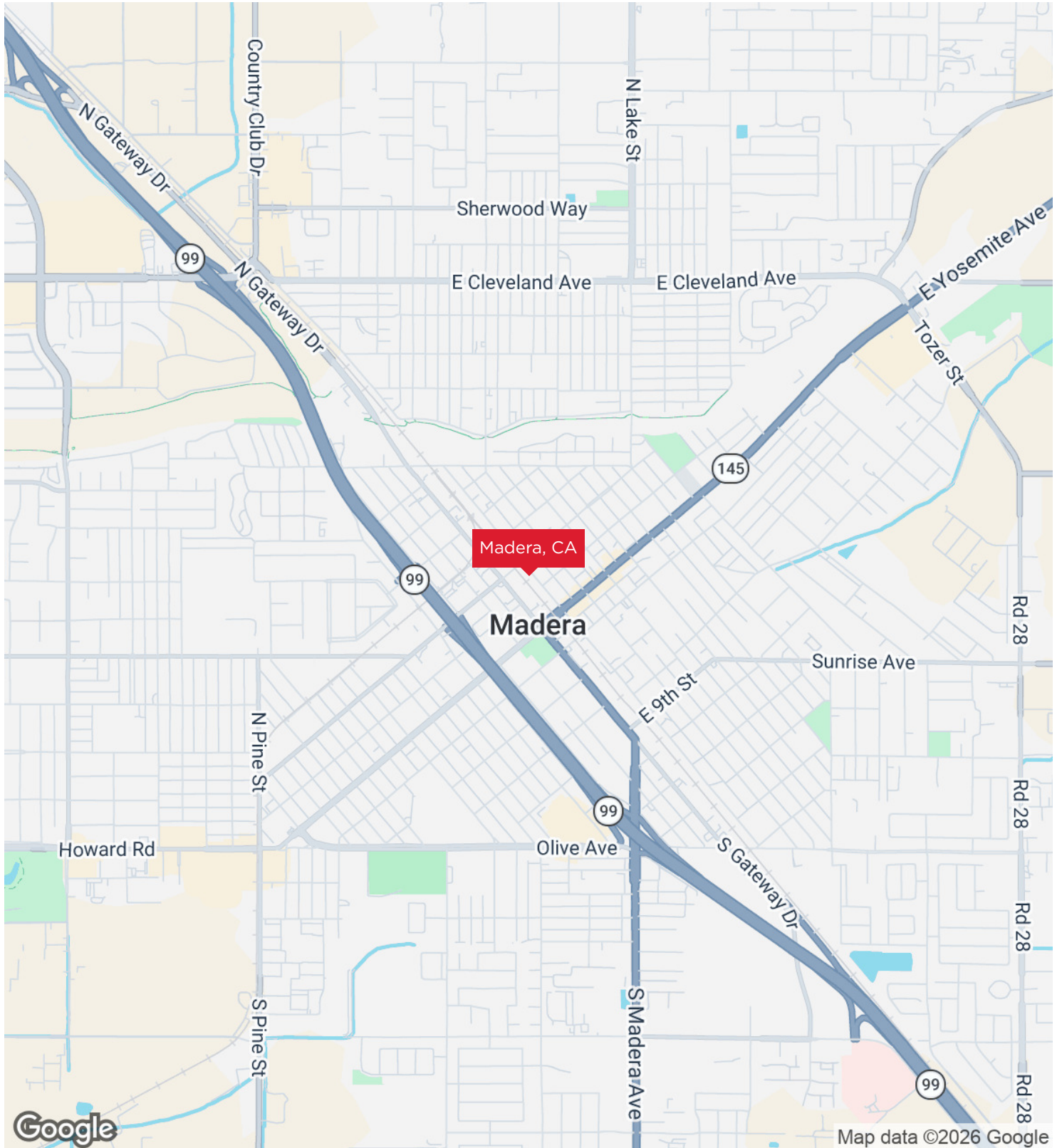
IN THIS SECTION

REGIONAL MAP

LOCATION MAP

AERIAL MAP

REGIONAL MAP

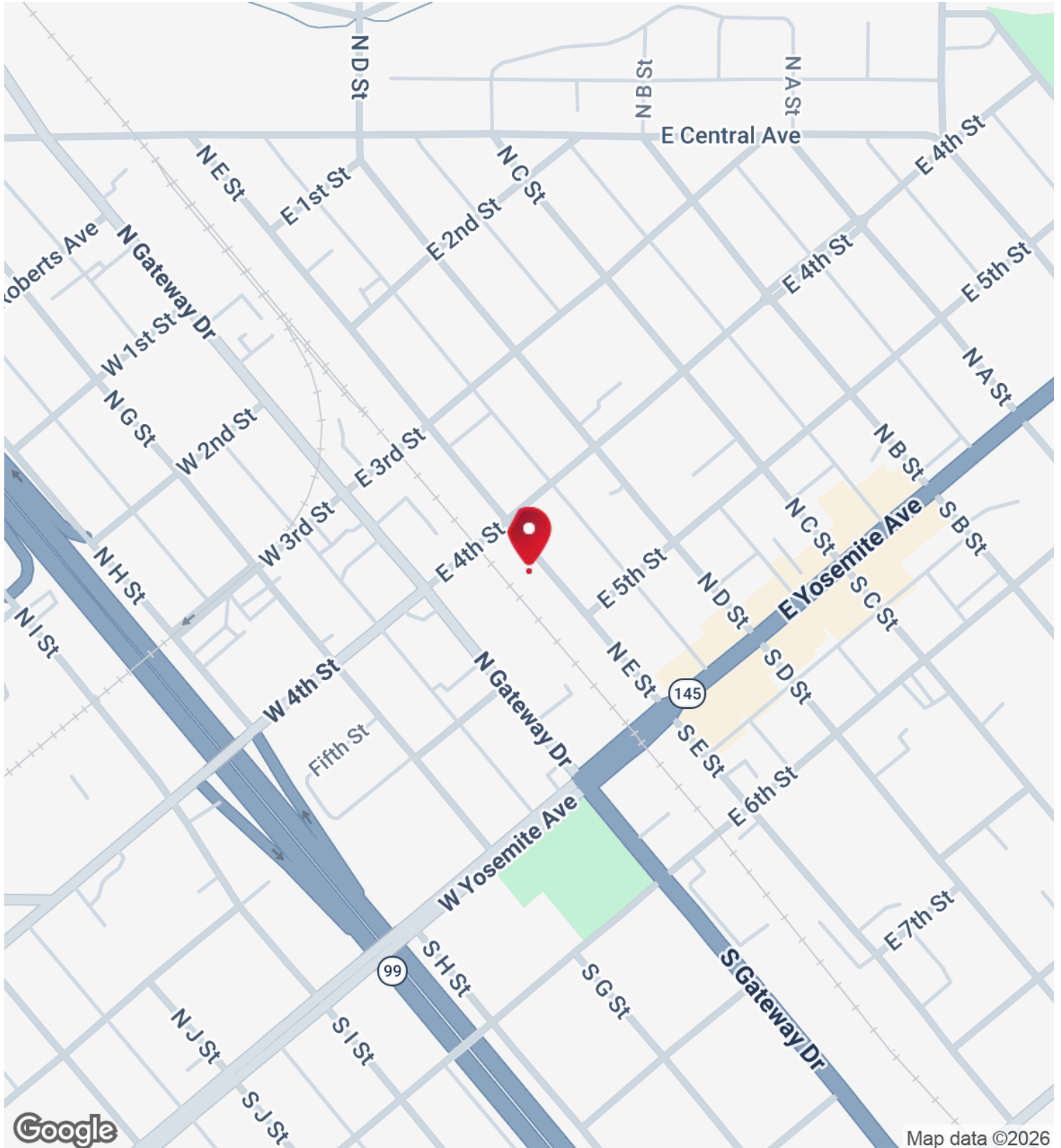


FOR SALE
INDUSTRIAL PROPERTY

RE/MAX SUCCESS - KIRK ATAMIAN
Each office independently owned and operated

501 North E St, Suite H
Madera, CA 93638

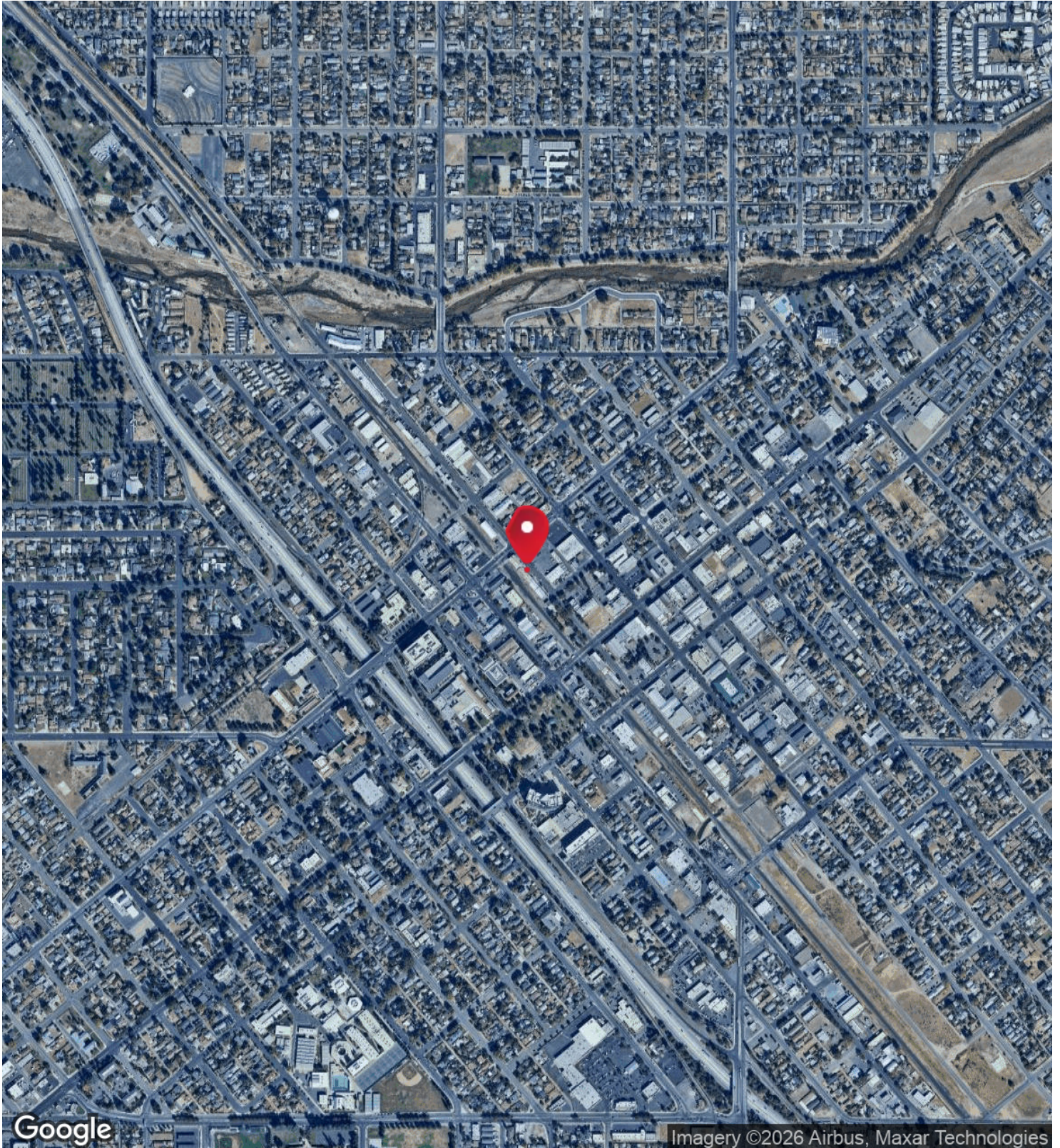
LOCATION MAP



FOR SALE
INDUSTRIAL PROPERTY

RE/MAX SUCCESS - KIRK ATAMIAN
Each office independently owned and operated

AERIAL MAP



FOR SALE
INDUSTRIAL PROPERTY

RE/MAX SUCCESS - KIRK ATAMIAN
Each office independently owned and operated

501 North E St, Suite H
Madera, CA 93638

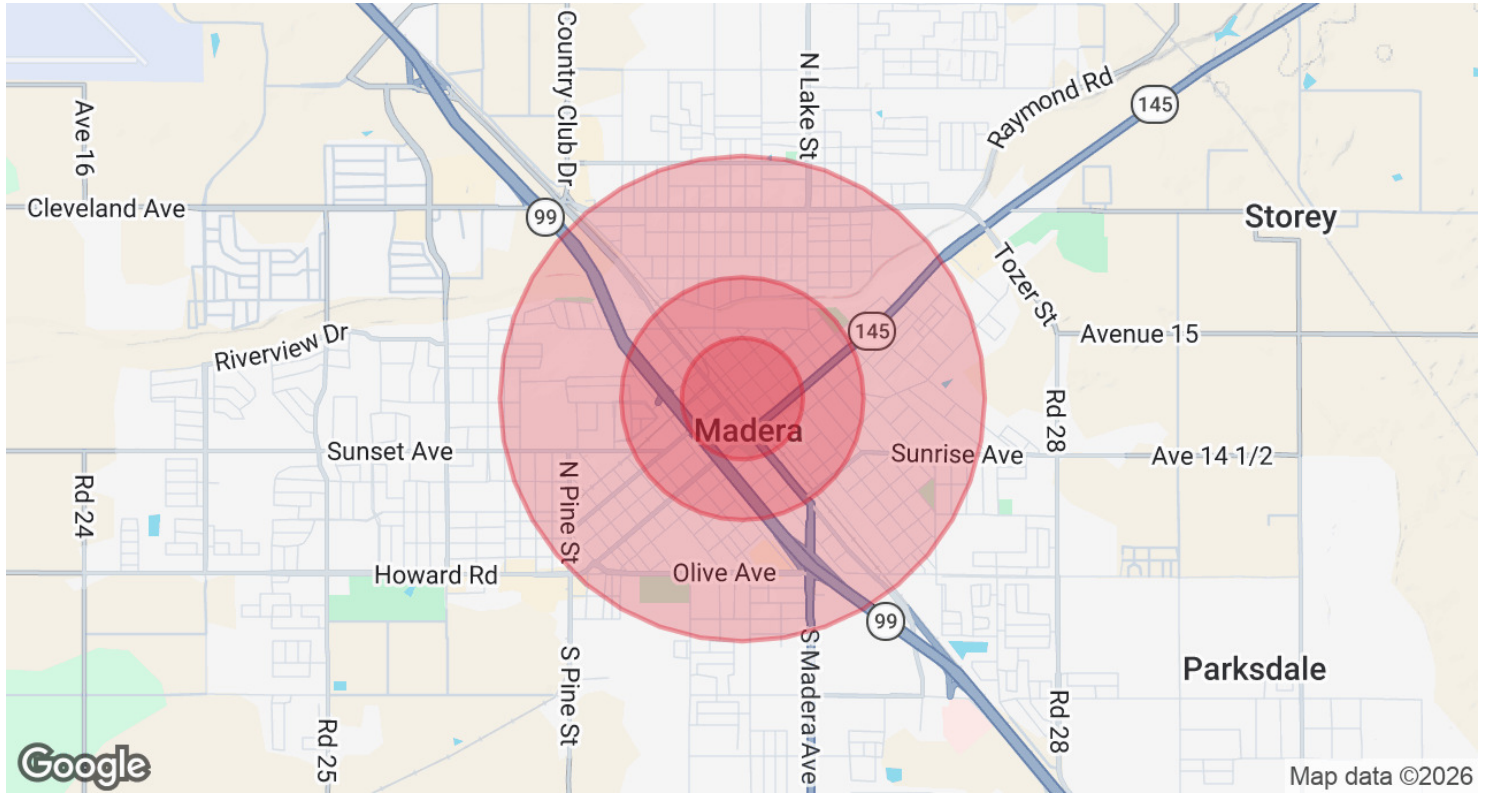
3

DEMOGRAPHICS

IN THIS SECTION

DEMOGRAPHICS MAP & REPORT

DEMOGRAPHICS MAP & REPORT



POPULATION	0.25 MILES	0.5 MILES	1 MILE
Total Population	1,090	5,580	20,559
Average Age	28.1	29.2	30.7
Average Age (Male)	26.5	25.4	29.1
Average Age (Female)	23.8	29.7	32.2

HOUSEHOLDS & INCOME	0.25 MILES	0.5 MILES	1 MILE
Total Households	284	1,506	5,635
# of Persons per HH	3.8	3.7	3.6
Average HH Income	\$52,832	\$53,226	\$67,303
Average House Value	\$135,341	\$215,567	\$266,939

2023 American Community Survey (ACS)

FOR SALE
INDUSTRIAL PROPERTY

RE/MAX SUCCESS - KIRK ATAMIAN
Each office independently owned and operated

4

ADVISOR BIOS

IN THIS SECTION

ADVISOR BIO 1

ADVISOR BIO 1

**KIRK ATAMIAN**

Commercial Specialist

Kirk@ckss.com

Direct: **559.246.0000**

CalDRE #02127378

PROFESSIONAL BACKGROUND

The information in this brochure has been obtained from sources deemed reliable; however, Kirk Atamian and RE/MAX Commercial/Success make no representations or warranties — express or implied — as to the accuracy or completeness of the information herein. All property descriptions, square footage, financial figures, lease rates, and projections are approximate, for illustrative purposes only, and subject to change or withdrawal without notice. Prospective tenants are advised to independently verify all information to their own satisfaction prior to executing any agreement.

Nothing in this brochure constitutes legal, tax, environmental, or investment advice. Kirk Atamian and RE/MAX Commercial/Success have not conducted any physical inspection or environmental assessment of the property. Interested parties assume full responsibility for performing their own due diligence.

Any photographs, virtual staging, or digitally enhanced images are for illustrative purposes only and may not reflect the current condition of the property. Digitally altered images are disclosed as such per California AB 723.

The submission of this brochure does not constitute an offer to lease or sell.

Kirk Atamian, DRE Lic. No.: 02127378 | RE/MAX Commercial/Success, Broker DRE Lic. No.: 01893830 | Each RE/MAX® office is independently owned and operated.

E. & O.E. — Errors and Omissions Excepted

Kirk is renowned as a high-touch broker, celebrated for his extensive market knowledge and his unwavering dedication to his clients and their interests. His success story is largely woven from the fabric of positive referrals, testament to his tireless efforts on behalf of his clients and the respect he garners. Kirk, along with his team of detail-oriented professionals, is well-versed in cutting-edge technologies that can revolutionize targeted marketing and streamline the closing of deals.

Kirk's roots run deep in the Valley. Having graduated from Madera High School, where he actively participated in wrestling and football, he transitioned into entrepreneurship, owning and managing several small businesses in and around Madera. His role as chairman of the Madera Chamber of Commerce was pivotal in representing business interests and played a significant part in facilitating the development of the North Fork casino along Highway 99.

Re/Max Success - Kirk Atamian501 North E St, Suite H
Madera, CA 93638**FOR SALE**
INDUSTRIAL PROPERTYRE/MAX SUCCESS - KIRK ATAMIAN
Each office independently owned and operated501 North E St, Suite H
Madera, CA 93638