



SANARA
AT RESERVA CONCHAL

PHASE II



NATURALLY COSTA RICA

With a year-round tropical climate, Costa Rica provides the perfect conditions for an active outdoor lifestyle, with exotic tropical forests, active volcanoes, white sandy beaches, charming local towns and a distinct cultural heritage.

This is a land of warm greetings,
happy people and contrasting colors.

THIS IS PURA VIDA - THE SIMPLE LIFE.



THE LIFESTYLE YOU'VE EARNED

Reserva Conchal offers peaceful tranquility with direct access to Playa Conchal away from the bustle of urban life.

Reserva Conchal is located just minutes away from two world-class marinas: Flamingo Marina (15 minutes) and Papagayo Marina (60 minutes), and is conveniently situated only 50 minutes from Liberia International Airport.

From its pristine sandy beaches, tropical rainforest, waterfalls and picturesque mountains, to the vibrant social life of the local beach clubs, Guanacaste has something for everyone.



SANARA AT RESERVA CONCHAL

Sanara is a sustainable community and the latest offering within Reserva Conchal. Owners will have access to the full range of benefits and amenities currently offered at Reserva Conchal, including:

- . Titled and fee simple ownership
- . Gated community
- . 24/7 security
- . Low HOA fees
- . 14 restaurants from fine dining to casual eateries
- . 18-Hole Roert Trent Jones II Golf Course, Certified By Audobon
- . First Class Fitness Center
- . Fitness Classes
- . World acclaimed W Hotel & Westin Reserva Conchal
- . Two Full Service Spas
- . Direct Access to Playa Conchal
- . Monthly Complimentary Owner Social Gatherings, Volunteer Offerings and Multiweekly Social Special Events
- . Beach club membership: Features beach pools, restaurants, bars, coworking space, game zone and sports equipment usage - bikes, surfboards, kayaks, SUP, etc.
- . Sports Complex: Pickleball and tennis courts, gym, swimming pool, and clubhouse.



RESERVA CONCHAL

As part of Reserva Conchal, life at Sanara provides access to:

- 1 Reserva Conchal Main Entrance
- 2 Beach Club
- 3 W Hotel Costa Rica
- 4 W Residences Costa Rica
- 5 Westin Reserva Conchal
- 6 Playa Conchal Viewpoint
- 7 Future Sports Complex
- 8 Soccer Field
- 9 Skate Park
- 10 Bee Hives
- 11 Reserva Conchal Nursery Garden
- 12 Golf Course
- 13 Tennis Courts
- 14 Hospitality Desk
- 15 Hiking Trails





FOCUS ON WHAT'S IMPORTANT

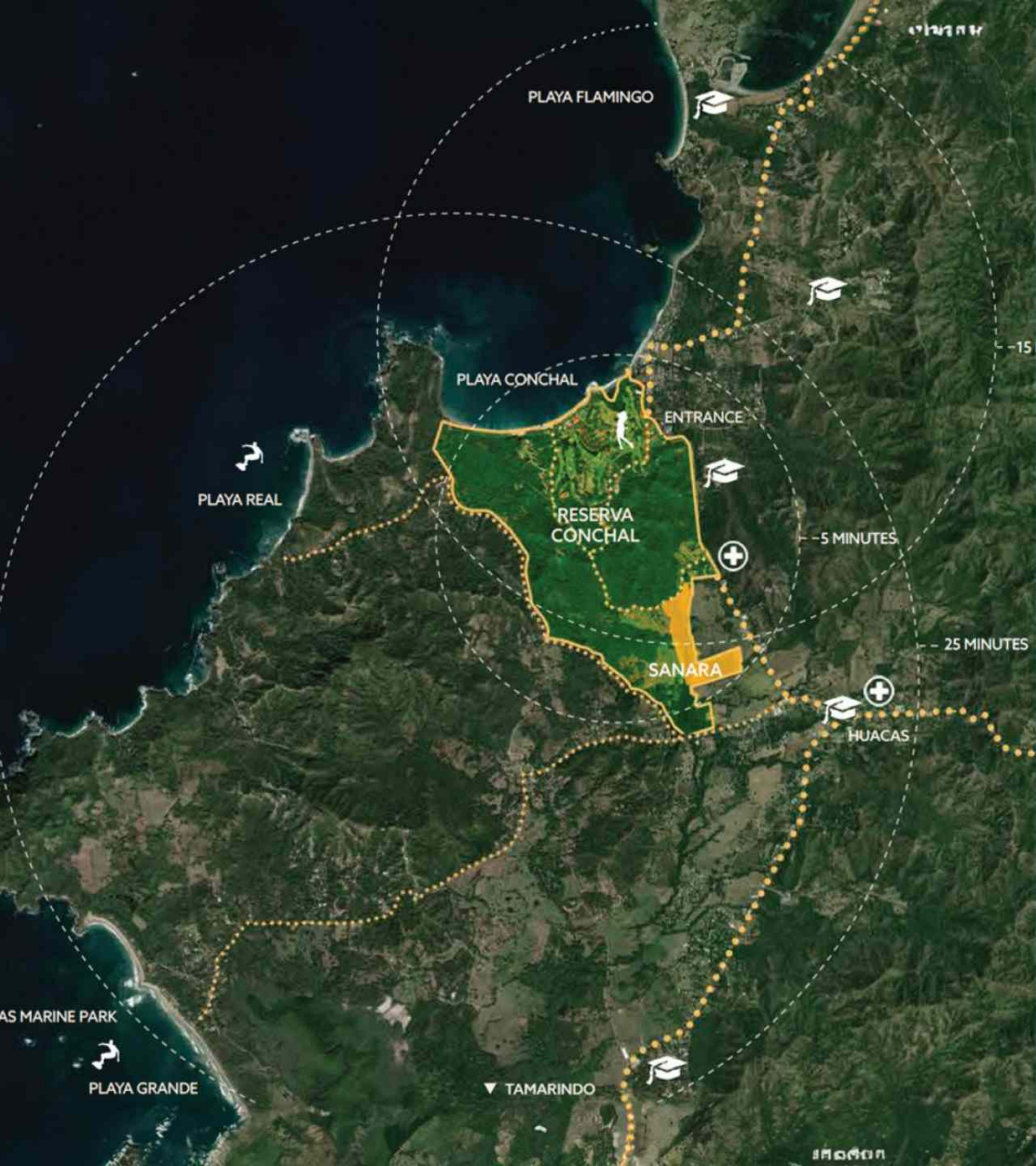
Whether you're looking for a place to retire or raise a family, Reserva Conchal offers access to quality health and education facilities. Nearby, you'll find some of the best schools in Costa Rica, such as La Paz Community School and the Costa Rica International Academy (CRIA), both accredited private schools located less than 1 km away.



ADVENTURE IN PARADISE

Whether you prefer white water rapids, cloud forests, delicate coral reefs, or white sandy beaches, Guanacaste is an adventure lover's paradise. Within or near Reserva Conchal, there is an array of activities including hiking, snorkeling, golfing, diving, world-class fishing, paddleboarding, kayaking, surfing, swimming, biking, zip lining, yoga, or simply relaxing on a beach. A world of possibilities and adventure awaits.





BEYOND CONCHAL

At Reserva Conchal, you are just a short drive away from other exciting areas and activities in the Northern Coastal Region. From your home at Sanara, you will be only minutes from top-rated educational and medical facilities, as well as within easy reach of stretches of world-class beaches, marinas, and healthy dining options. Additionally, you are conveniently located near major airports, ensuring seamless travel connections.

GET READY TO EXPLORE!

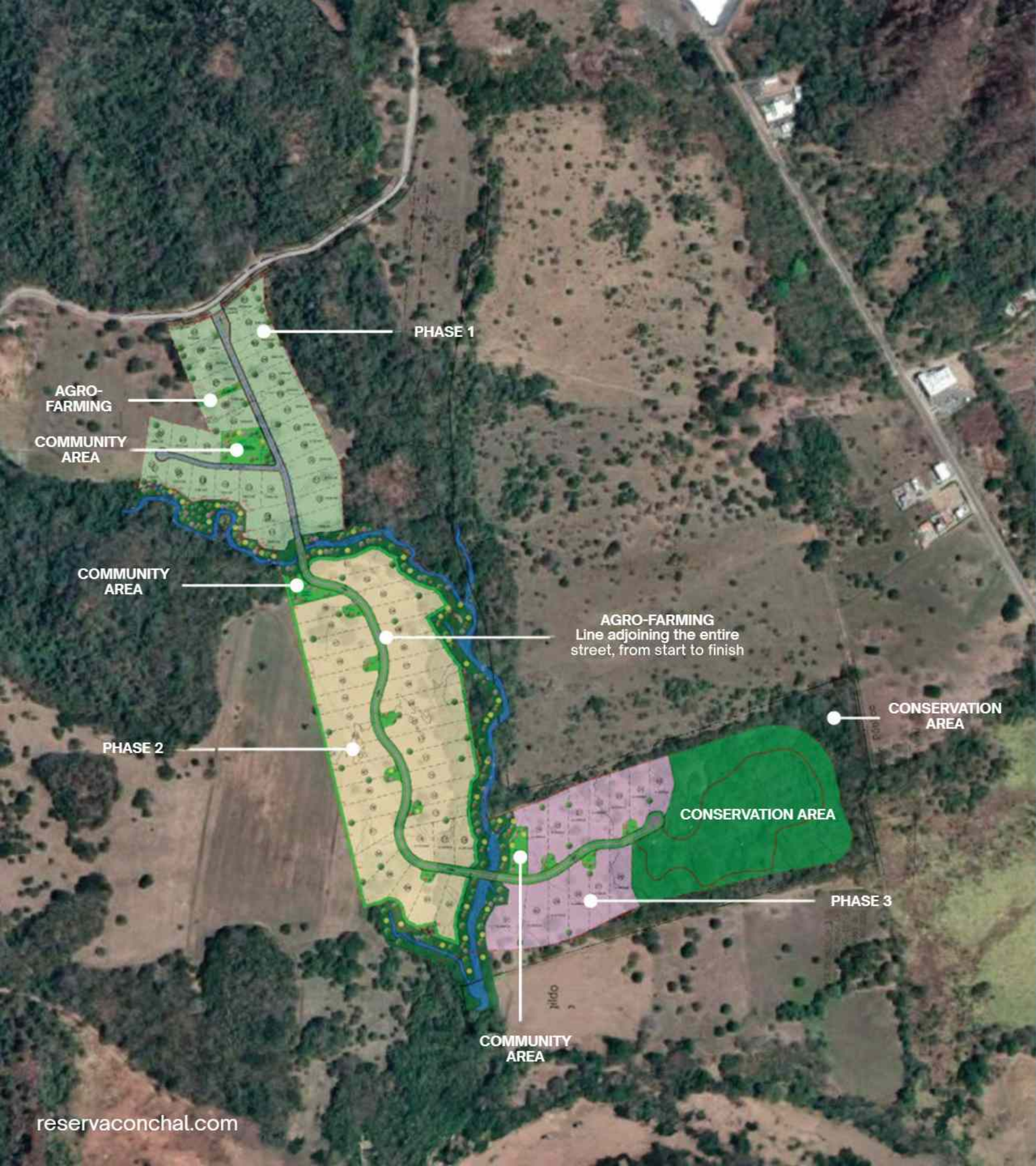


BEST OF ALL WORLDS

WHO SAYS YOU CAN'T HAVE IT ALL?

Welcome to a location where you can live a healthy, environmentally conscious lifestyle while still having access to modern conveniences and technology. This is a community of shared values and beliefs, aspiring to create a place that lives in harmony with nature and the environment. A place to heal and live healthily. A place to call home.

**WELCOME TO SANARA AT
RESERVA CONCHAL**



Sanara is a sustainable community set within the existing development of Reserva Conchal. The master plan is comprised of three interconnected components: agriculture, conservation, and residential zones.

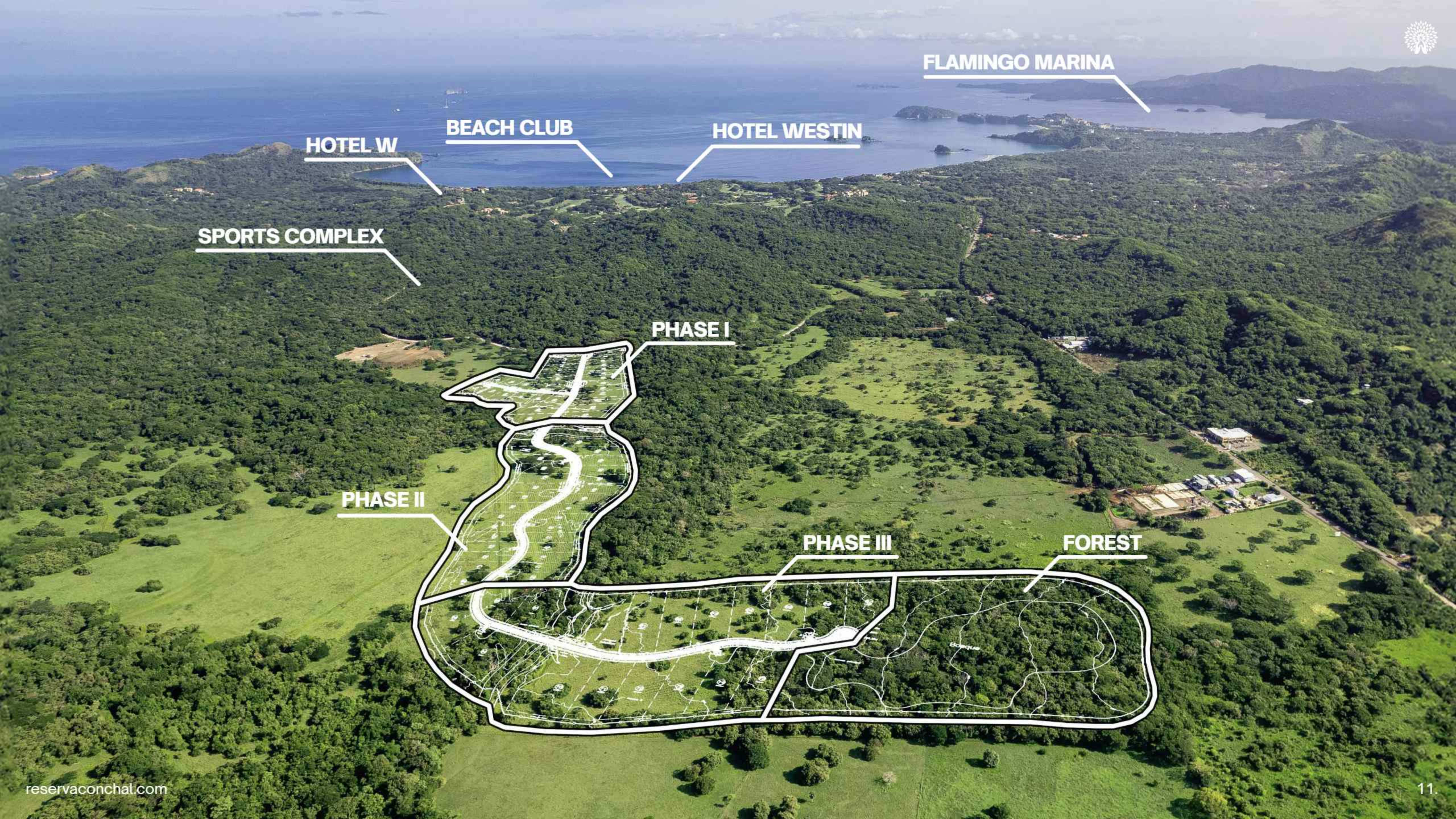
Large areas of forest have been set aside for conservation, complete with a network of walking trails that provide direct access to the natural site.

TOTAL OF 75 RESIDENCES

Phase I - 30 | Phase II - 28 | Phase III - 17

Site Area	70 acres
Conservation area	16 acres
Agricultural area	10 acres
No. of Units	75 residences

Phase 1	30 residences
Phase 2	28 residences
Phase 3	17 residences
Community	4 acres



FLAMINGO MARINA

HOTEL WESTIN

BEACH CLUB

HOTEL W

SPORTS COMPLEX

PHASE I

PHASE II

PHASE III

FOREST



PHASE II - SITEPLAN

LOT	M ²	Ft ²	% of Acre
31	2.258	24.305	56%
32	1.934	20.818	48%
33	1.634	17.588	41%
34	1.768	19.031	42%
35	1.730	18.622	39%
36	1.670	17.976	38%
37	1.682	18.105	41%
38	1.902	20.473	46%
39	1.769	19.042	42%
40	1.704	18.342	44%
41	1.716	18.471	44%
42	1.698	18.277	42%
43	1.830	19.698	44%
44	1.824	19.624	44%

LOT	M ²	Ft ²	% of Acre
45	2.116	22.777	44%
46	1.652	17.782	41%
47	1.644	17.696	40%
48	1.882	20.258	46%
49	1.708	18.385	42%
50	1.690	18.191	41%
51	1.773	19.085	43%
52	1.593	17.147	39%
53	1.555	16.738	38%
54	1.775	19.106	44%
55	1.711	18.417	42%
56	1.701	18.310	42%
57	1.771	19.063	43%
58	1.824	19.634	44%

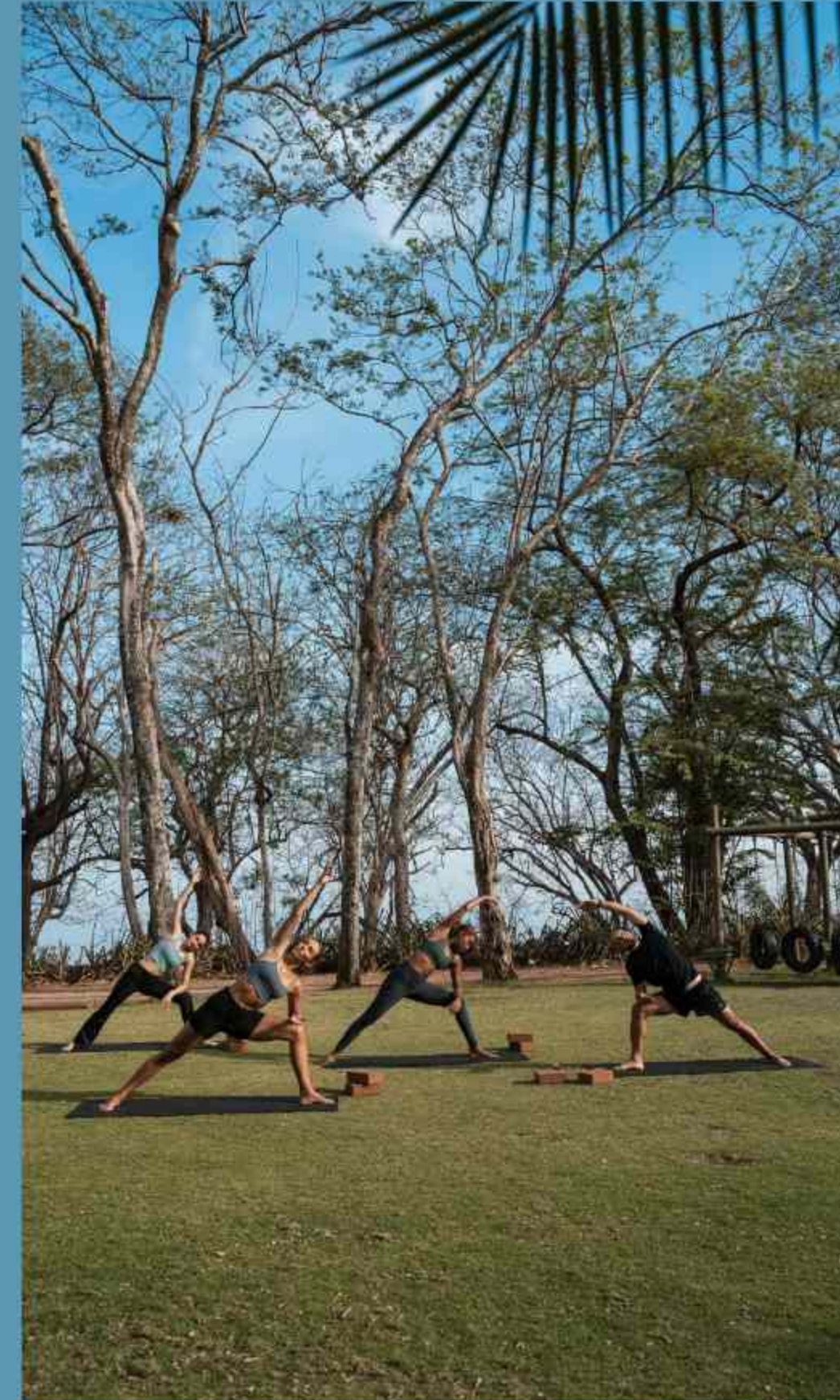
PILLARS OF SANARA



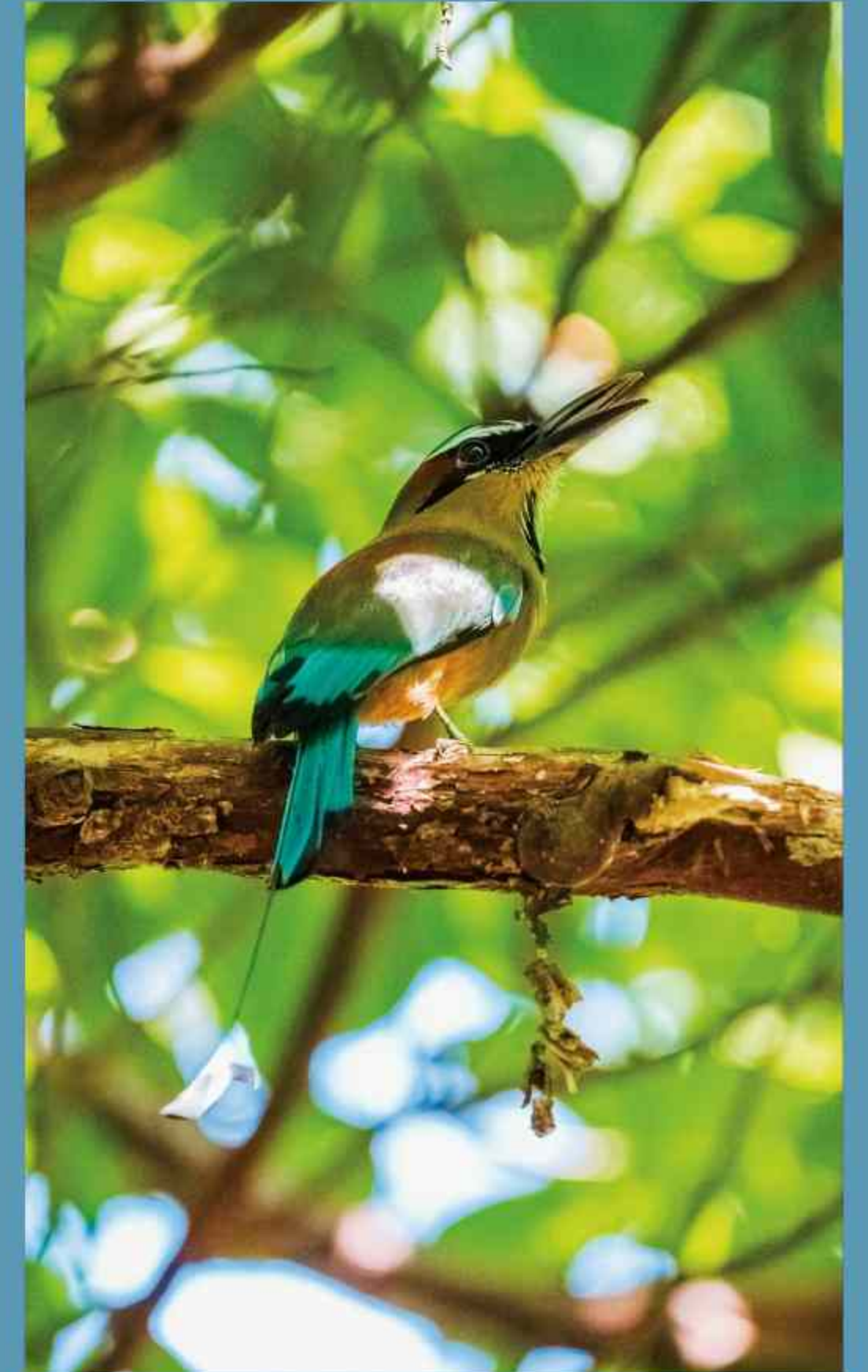
**HEALTH &
WELLNESS**



SUSTAINABILITY



COMMUNITY



**ECOLOGICAL
INTEGRATION**



LIVING WITH THE LAND

Living at Sanara is an opportunity to reside in an environmentally conscious setting that prioritizes sustainable spaces for people to live, work, and play; to immerse yourself in the future of regenerative living.

Built upon the four key pillars of health and wellness, sustainability, community, and ecological integration, Sanara aims to create a holistic environment that helps people thrive and be their best!



SUSTAINABLE HOMESTEAD

Sustainability and environmentally conscious energy usage are central to the ethos at Sanara. Active and passive green technologies, as well as renewable energy sources such as available photovoltaic solar panels, inverter air conditioning systems, high energy star appliances, and water catchment systems, will be outfitted in the homes. High electric bills will be one less thing to worry about!



LIFE AT SANARA

Sanara offers a range of exceptional amenities designed to enhance your lifestyle and well-being. Enjoy the following facilities within our community:

- . Clubhouse: A central hub for social gatherings and events.
- . Swimming Pool: A refreshing retreat for relaxation and exercise.
- . Splash Park: Fun and excitement for the entire family.
- . Kids Playground: A safe and engaging area for children to play.
- . Open Gym: Stay fit and healthy with outdoor exercise equipment.
- . Yoga Deck: A serene space for yoga and meditation practices.

AN ECOLOGICAL NEIGHBORHOOD



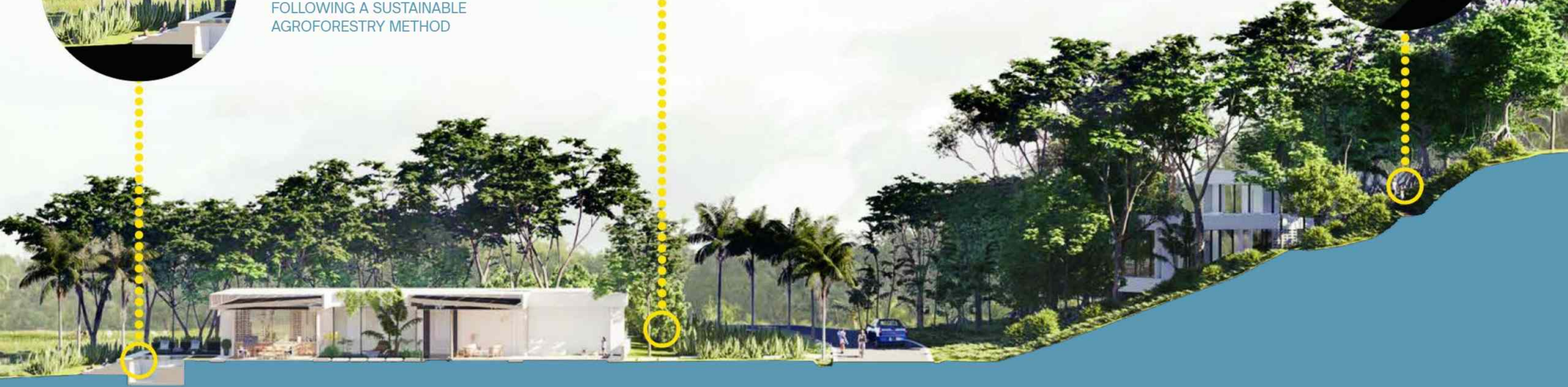
PLANTING AT PROPERTY
BOUNDARIES MIXES
LOCAL VEGETATION AND
AGRICULTURAL CROPS,
FOLLOWING A SUSTAINABLE
AGROFORESTRY METHOD



FRUITS TREES AND AGRICULTURAL
PLANTINGS SURROUND EACH
PROPERTY, AND BORDER EACH
ROAD AND PATHWAY, BRINGING
FRESH FOOD RIGHT TO YOUR
DOORSTEP



INTERCONNECTED TRAIL
NETWORKS IMMERSE
YOU IN THE COSTA RICAN
WILDERNESS, PROMOTING
WELL-BEING THROUGH
ACCESS TO NATURE





SUSTAINABILITY REAL ESTATE BENEFITS!

Sanara Development follows core sustainable and regenerative philosophies with the goal of improving the health and resilience of ecosystems and communities. The aim is to regenerate and restore the land to its original state while developing sustainable, low-impact residences.

Benefits include:

- Ecological Restoration
- Climate Resilient Residences
- Improved Heal and Well-being
- Sustaining Resource Use
- Enhanced Community Engagement
- Increased Long-Term Financial Returns

Sanara will adhere to EDGE (Excellence in Design for Greater Efficiencies) building guidelines, a green building standard and international certification system focused on making buildings more resource-efficient.





LOS ANGELES |
SAN FRANCISCO |
VANCOUVER

EL SALVADOR

HOUSTO | DALLAS | DENVER
| CALGARY

MIAMI | ORLANDO |
ATLANTA | WASHINGTON |
NEW YORK | TORNT0

LONDON | ZURICH |
PARIS | FRANKFURT |
MADRID

LAKE COCIBOLCA

LIBERIA

PLAYA
CONCHAL

TAMARINDO

GULF
NICOYA

COSTA RICA

SAN JOSE

SAN
VITO

CARRIBEAN
SEA

ATLANTIC OCEAN

PANAMA CITY

PANAMA

GLOBALLY CONNECTED

Costa Rica is an ideal tourist and remote work destination for visitors looking to escape to a more tranquil and natural environment.

SKIP THE TRAFFIC!

With direct flights to North America, Mexico, and Europe, it offers a unique opportunity to live in a beautiful paradise while staying connected to the world.



WELCOME HOME

Sanara Phase II at Reserva Conchal
will feature 28 residences on exclusive
private homesites ranging from 1,522 m²
to 2,266 m²



CONTEMPORARY TROPICAL LUXURY

Each coastal modern homes offers customizable features including:

- . 3 and 4-bedroom options
- . Casita available on all models
- . Open living spaces
- . Picturesque views of the surroundings
- . Spacious Garages
- . Outdoor Covered Dining and Kitchen/BBQ area
- . Spa and Beach Club
- . Available Integrated Solar Systems
- . Titled and fee simple ownership
- . Tropical Landscaping and Fruit Trees
- . Furniture and Decor packages available



CLEAN FRESH MODERN DESIGN





ONE SIZE DOES NOT FIT ALL!

Sanara offers a variety of floor plans to meet the needs of individual homeowners, whether they prioritize lifestyle or value. We provide both Standard and more spacious Deluxe floor plans, with PRIVATE Pools included in ALL models. Additionally, adding an unattached Casita is a wonderful complement available on all models and homesites.

Standard floor plans range from 3,500-3,900 ft² of construction. Private Pools are included on ALL models.

3/3

4/4

More spacious Deluxe floor plans from 4,700-5,500 ft². Private Pools are included on ALL models.

3/3.5

4/4.5

THE CASITA in the back of the property - 2 bed/1 bath with coffee station and covered terrace.



STANDARD 3 BEDROOMS - 3 BATHS

	M²	Ft²
AC - First floor	173	1.862
Covered terraces	34	366
Subtotal - Living Space	207	2,228
Pool Terrace	57	614
Subtotal - Open Living Space	57	614
Utility Area	1,5	16
Pool	24	258
Garage	39	420
Subtotal	65	694
TOTAL	329	3536



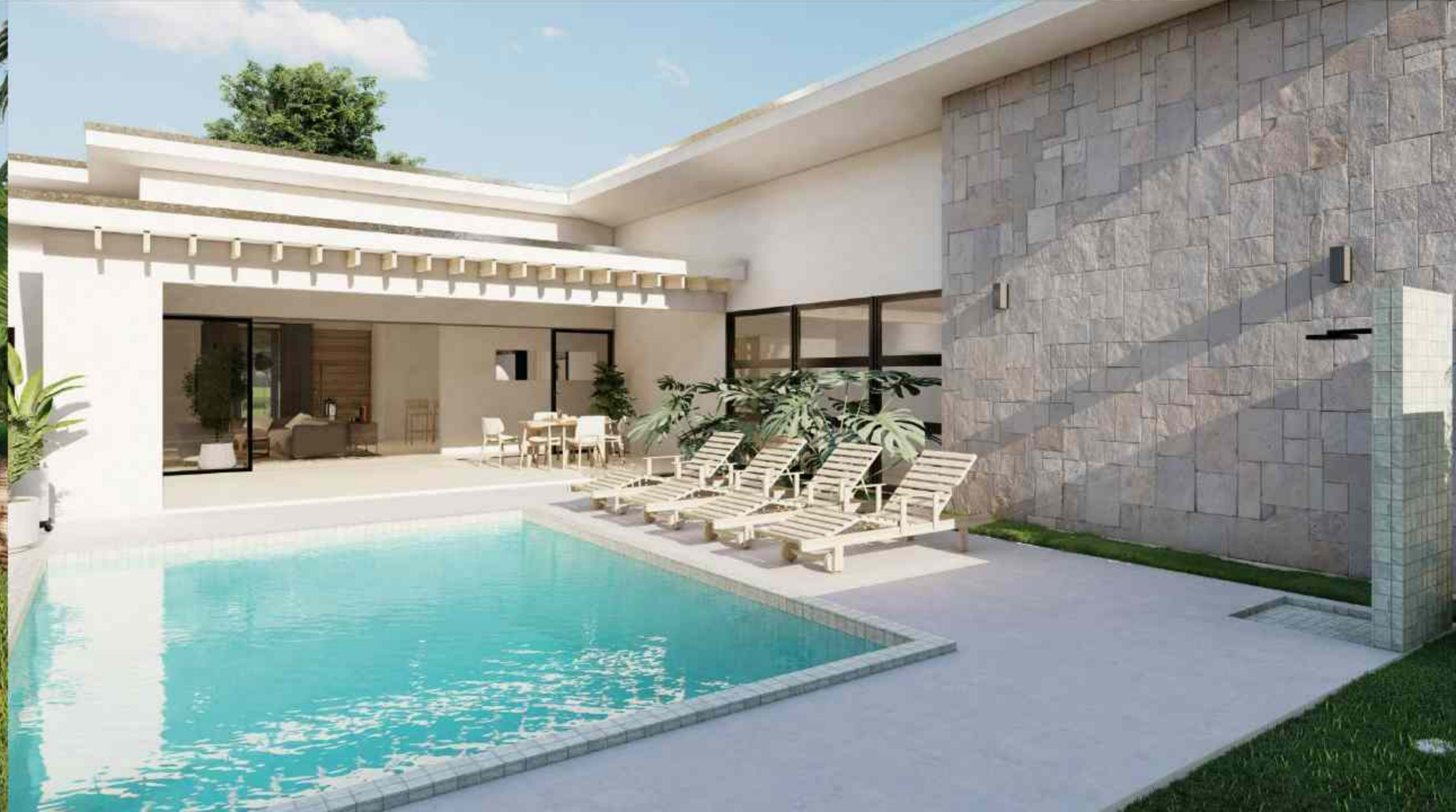


STANDARD 4 BEDROOMS - 4 BATHS

	M ²	Ft ²
AC - First floor	204	2,196
Covered terraces	34	366
Subtotal - Living Space	238	2,562
Pool Terrace	57	614
Subtotal - Open Living Space	57	614
Utility Area	1,5	16
Pool	24	258
Garage	39	420
Subtotal	65	694
TOTAL	360	3870



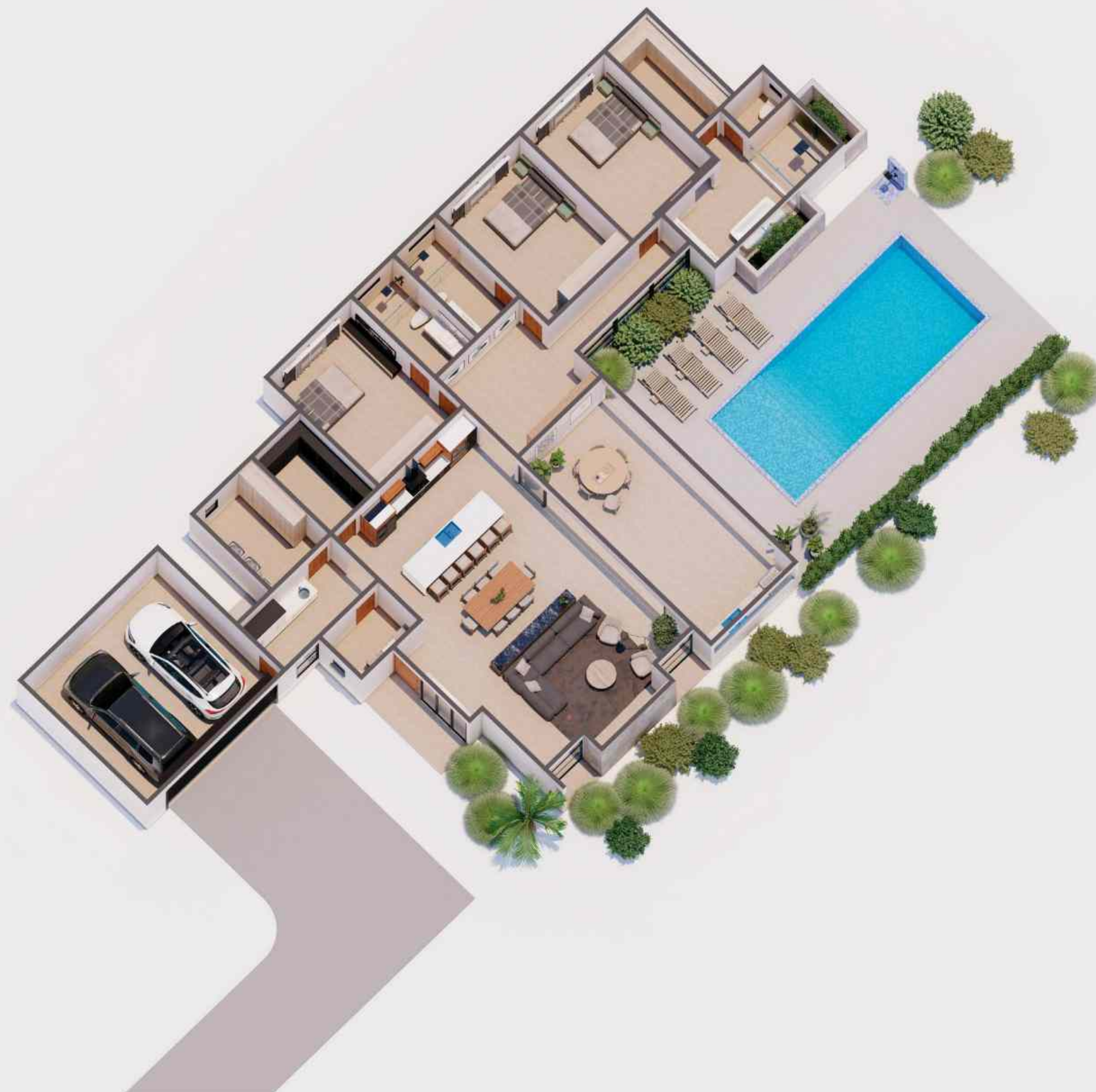






DELUXE 3 BEDROOMS - 3.5 BATHS

	M²	Ft²
AC - First floor	255	2,745
Covered terraces	37	398
Subtotal - Living Space	292	3,143
Pool Terrace	66	710
Subtotal - Open Living Space	66	710
Utility Area	1,5	16
Pool	36	388
Garage	39	420
Subtotal	77	823
TOTAL	435	4677





DELUXE 4 BEDROOMS - 4.5 BATHS

	M ²	Ft ²
AC - First floor	293	3,154
Covered terraces	37	398
Subtotal - Living Space	330	3,552
Pool Terrace	66	710
Subtotal - Open Living Space	66	710
Utility Area	1,5	16
Pool	36	388
Garage	39	420
Subtotal	77	823
TOTAL	473	5086









CASITA

2 bedrooms - 1 bath

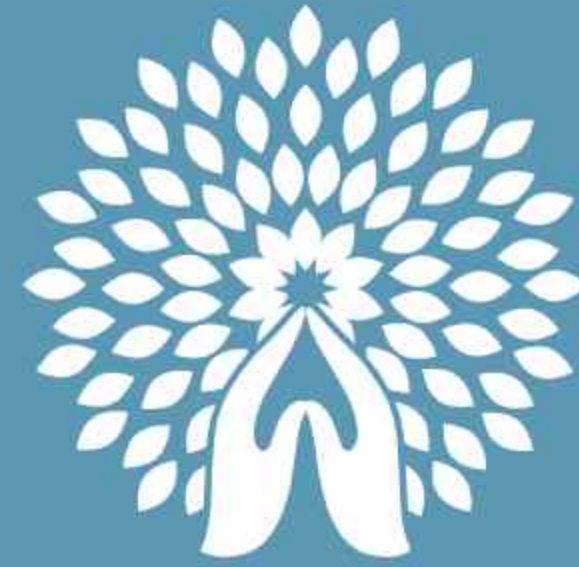
	M ²	Ft ²
AC - First floor	38	407
Terraces	18	194
TOTAL	56	600







WELCOME TO A NEW WAY OF LIVING



SANARA
AT RESERVA CONCHAL