

CONFIDENTIALITY NOTICE

THIS PRESENTATION AND ITS CONTENTS ARE CONFIDENTIAL AND PROPRIETARY TO OHANA REAL ESTATE DEVELOPMENT AND CONSTRUCTION L.L.C. ("OHANA"). THE INFORMATION CONTAINED HEREIN IS PROVIDED EXCLUSIVELY FOR THE USE OF THE INTENDED RECIPIENT, IN CONNECTION WITH THE EVALUATION AND POTENTIAL MARKETING OF THE REAL ESTATE PROJECT DESCRIBED HEREIN.

THIS PRESENTATION IS FOR YOUR EXCLUSIVE USE OF AND IS NOT TO BE SHARED, REPRODUCED, OR DISTRIBUTED IN WHOLE OR IN PART TO ANY THIRD PARTY, INCLUDING BUT NOT LIMITED TO PROSPECTIVE CLIENTS, WITHOUT THE PRIOR WRITTEN CONSENT OF OHANA.

OHANA RETAINS OWNERSHIP OF ALL INTELLECTUAL PROPERTY AND PROPRIETARY INFORMATION CONTAINED IN THIS PRESENTATION.

UNAUTHORIZED USE, DISCLOSURE, OR DISTRIBUTION OF THIS PRESENTATION MAY RESULT IN CIVIL AND CRIMINAL LIABILITIES, INCLUDING BUT NOT LIMITED TO INJUNCTIVE RELIEF, DAMAGES, AND LEGAL FEES.

BY ACCESSING AND REVIEWING THIS PRESENTATION, YOU ACKNOWLEDGE AND AGREE TO ABIDE BY THE TERMS AND CONDITIONS SET FORTH HEREIN. ANY BREACH OF THESE TERMS MAY LEAD TO LEGAL CONSEQUENCES.



OHANA
- BY THE SEA -

ESCAPE TO THE SEA
OWN YOUR DREAM LUXURY VILLA



OHANA
- BY THE SEA -

YOUR ROYAL REALM ON
THE EMIRATI RIVIERA



OHANA
- BY THE SEA -

A GLANCE AT

1

OHANA BY THE SEA STEP INTO PRIVILEGE

Welcome to Ohana by the Sea, an exclusive residential villas, at the borders of Dubai in Ghantout, UAE. Here, every moment will last forever and lifetime memories will be made, every day.





AL JURF - GHANTOOT: A PLACE WITH A MAJESTIC TALE

Ohana by the Sea is nestled in a premium neighborhood of Al Jurf, a unique development project stretching alongside the coastline of Sahel Al Emarat in Ghantoot, UAE nearby the Ghantoot Racing & Polo Club and the Ghantoot Marina.

OUR LOCATION



OHANA BY THE SEA VILLAS

BY OHANA DEVELOPMENT

AMENITIES AROUND OUR LOCATION

-  Walking Distance from the Beach
-  Walking distance to public Gardens
-  Direct access to sheikh Zayed Road
-  15 Minutes away from Ghantout Racing and Polo Club
-  20 Minutes away from Dubai Parks and resorts (Lego-Land, Motion gate, Bollywood parks)
-  30 Minutes away from Dubai Marina mall
-  45 minutes away from YAS, Abu Dhabi (Ferrari world, WarnerBrothersPark, Water-world, YAS Mall Abu Dhabi)

PROJECT MASTER PLAN

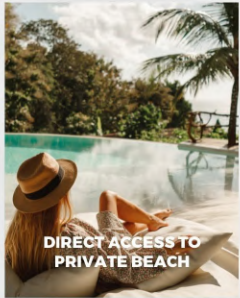


An aerial photograph of a coastal residential development at sunset. The scene is dominated by a large, curved waterfront area with numerous houses and villas, many of which have white roofs. The houses are interspersed with lush greenery, including palm trees and other tropical plants. A winding road or canal cuts through the development. In the background, the city skyline is visible, with a prominent tower emitting a bright light. The sky is a mix of orange, yellow, and blue, suggesting the time is either dawn or dusk. The overall atmosphere is serene and luxurious.

YOUR FOREVER HOME

Away from the city's hustle and bustle yet in the heart of a vibrant nation, Ohana by the Sea is your nest of calm and serenity, only 35 minutes from Abu Dhabi and 20 minutes from Dubai. Al Jurf enjoys a strategic, yet secluded, location in the Emirates. It was conceived around the former Palace of late Sheikh Zayed, and still bears the many marks of a majestic realm including the royal palace.

A PREMIUM COLLECTION OF EXQUISITE OFFERINGS



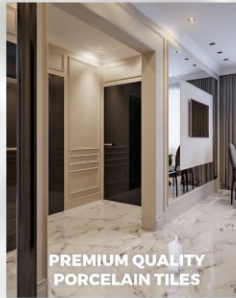
DIRECT ACCESS TO PRIVATE BEACH



SPACIOUS MASTER SUITES WITH HIS & HER WARDROBES



THOUGHTFULLY ACCESSORISED WARDROBES



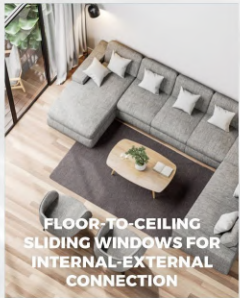
PREMIUM QUALITY PORCELAIN TILES



EXQUISITE PORCELAIN WOODEN FLOORING IN BEDROOMS



EUROPEAN KITCHENS WITH INTEGRATED APPLIANCES UPGRADE OPTIONS



FLOOR-TO-CEILING SLIDING WINDOWS FOR INTERNAL-EXTERNAL CONNECTION



SUSTAINABLE, EFFICIENT AND INNOVATIVE AIRCOOLING (VRF)



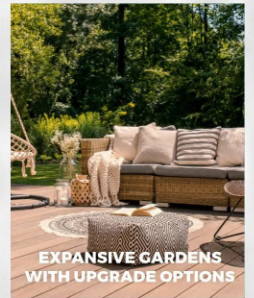
ELEVATOR IN EACH HOME



PARKING SPACES



IMPRESSIVE DOUBLE HEIGHT ENTRY




EXPANSIVE GARDENS WITH UPGRADE OPTIONS

OHANA MEANS FAMILY

Ohana means family in Hawaiian; and that's exactly what you can expect to find: a lavish retreat by the sea where you and your family can indulge in your own built-to-measure villa.



The background of the image is a close-up of teal-colored water with a bokeh effect. Numerous out-of-focus light spots, resembling bubbles or reflections, are scattered across the frame, creating a shimmering, ethereal atmosphere. The text is centered in the middle of the image.

**THE
MODERN
VILLAS**



5
0
4









VILLA MOANA

Modern Type 415 SQM

- 5
- 3
- 5
- 2





CANAL VILLA 480 SQM- THE MODERN- BACK





CANAL VILLAS

Modern Type 480 sqm

- 5 
- 3 
- 6 
- 2 



SIGNATURE SEAFRONT MANSION 1000 SQM- THE MODERN- FRONT







SIGNATURE SEAFRONT MANSION

Modern Type 1000 sqm



6



3



9



2

GROUND FLOOR



FIRST FLOOR





ELITE SEAFRONT MANSION 3000 SQM- THE MODERN-BACK





ELITE SEAFRONT MANSION

Modern Type 3000 sqm

8 2 10 8

GROUND FLOOR





ELITE SEAFRONT MANSION

Modern Type 3000 sqm

8 2 10 8

FIRST FLOOR













































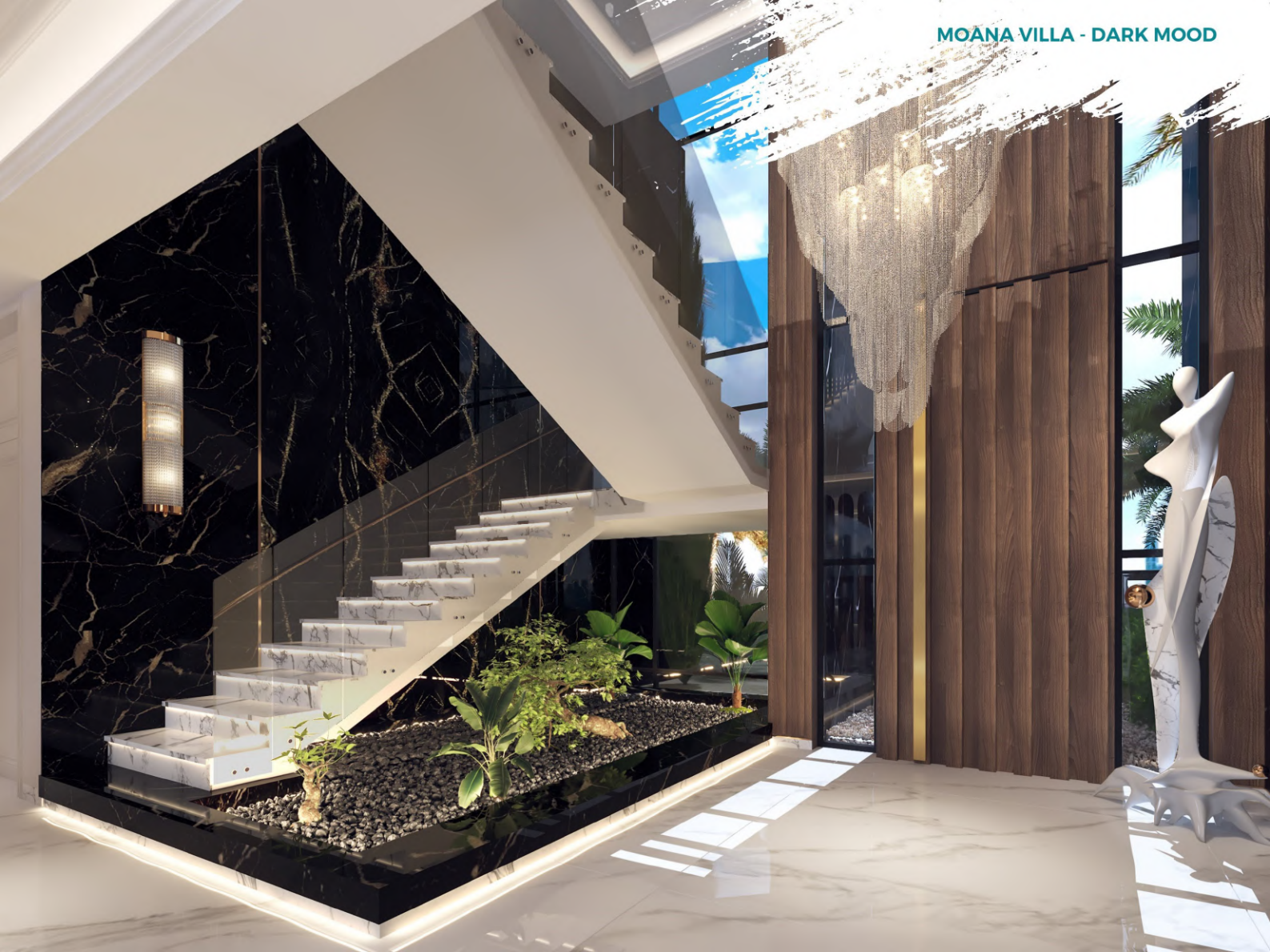




































































2

CUSTOMIZE THE FLOOR PLAN

Reimagine the interior layout of your villa: combine rooms or rearrange the floor composition to make your vision come to life.



CUSTOMIZE THE FLOOR PLAN

Make your dream house uniquely yours: we will help you sketch your vision and build it for you.

CUSTOMIZE THE INTERIOR

Because every home is unique, add your personal touch to your luxury villa by handpicking your material and customizing your interior design.



A modern bedroom interior featuring a large window with sheer curtains, a bed with a brown headboard and white blanket, a white sofa, and a unique chandelier made of dried branches. The room is decorated with framed art, a nightstand, and a side table. The lighting is warm and ambient.

CUSTOMIZE THE INTERIOR

Don't expect anything less than perfection in every corner of your dream home. Our experts will be with you every step of the way, to provide you with guidance and to help you turn your dream into a reality.

LANDSCAPE UPGRADE



TROPICAL RETREAT



MEDITERRANEAN

3

OHANA DEVELOPMENT

Since its establishment, Ohana Development has been imagining & executing premium properties and exclusive residential communities in the Middle East, including 240 luxurious villas, 12 commercial projects, and 180 homes.

300+
VILLAS

1000+
COMMUNITY
MEMBERS

3
CONTINENTS





OHANA
- BY THE SEA -

CONTACT US
54 222 8281

WEBSITE: OHANA-BYTHESEA.COM
FACEBOOK: WWW.FACEBOOK.COM/OHANADEV/
INSTAGRAM: [@OHANA_DEVELOPMENT](https://www.instagram.com/OHANA_DEVELOPMENT)

BROUGHT TO YOU BY



OHANA DEVELOPMENT