



**THE RITZ-CARLTON
RESIDENCES**

DIRIYAH

THE PULSE OF THE CITY AT YOUR DOORSTEP

Welcome to the Kingdom's first branded residential community by the legendary innovator of exceptional living, The Ritz-Carlton.

Your exquisitely designed home, coupled with top-tier resort-style amenities and unmatched services and benefits by The Ritz-Carlton, offers a distinctive living experience at the heart of Diriyah.

WELCOME
TO DIRIYAH,
THE CITY OF EARTH



Designed to enhance the overall quality of life of its residents, Diriyah is a destination that captures and charms the senses. With its rich history as the birthplace of the Kingdom, authentic Najdi-inspired architecture, and open, welcoming atmosphere, this is an idyllic place in which to put down roots, live in harmony with nature, and become a part of the next chapter in Diriyah's exciting story.

DIRIYAH
THE CITY OF EARTH



A PRESTIGIOUS DESTINATION LIKE NO OTHER

To live in Diriyah is to experience a world where everything is carefully arranged to enrich and enhance your quality of life. Choose from the finest array of international cuisines, draw inspiration from iconic cultural attractions, shop the world's high-end fashion brands, and explore breathtaking outdoor spaces, all within walking distance from your home.

From morning to evening, Diriyah's grand plazas and vibrant squares provide lively, welcoming settings for socializing and open-air events, while the restored Wadi Hanifah offers endless opportunities to enjoy life outdoors, with playgrounds and picnic areas, sporting activities, horseback riding, and trails for both walking and cycling that invite you to explore.



LIVE AN UNPRECEDENTED LIFESTYLE

A destination for those who appreciate the very finest things in life, Diriyah is more than just a residence; it's a testament to cultural grandeur. Nestled near a UNESCO World Heritage site, the locale is adorned with premier hotels, each offering amenities from elite gyms to serene spas.

Dine in elegance with specialty and signature cuisines that tantalize the taste buds. In Diriyah, a harmonious blend of cultural heritage and modern indulgences crafts a unique tapestry of refined living and leisure.



1958

1934

1930

1924

1920

1890



KING KHALID INTERNATIONAL AIRPORT

ROSHN FRONT

KAFD

AL NAKHEEL MALL

KING FAHAD INTERNATIONAL STADIUM

KINGDOM CENTER

AL FAISALIAH TOWER & MODE MALL

PRINCESS NOURAH BINT ABDULRAHMAN UNIVERSITY

RIYADH PARK

DIGITAL CITY

U WALK

KING SAUD UNIVERSITY

KING SALMAN PARK

CENTRIA MALL

RIYADH BOULEVARD CITY

AT-TURAIIF

THE RITZ-CARLTON RESIDENCES
DIRIYAH

ELEVATED LIVING IN A ONE-OF-A-KIND CITY

Designed with exceptional quality of life in mind, Diriyah is a destination where you can live, work, dine, shop and enjoy endless cultural and educational opportunities in a pedestrian-friendly city. Resplendent at the heart of the city is The Ritz-Carlton Residences, Diriyah situated next to the vibrant Diriyah Square as well as the Qurain Cultural District.

- 15-minute drive from the center of Riyadh
- 25-minute drive from King Khalid International Airport
- 14 sq km sustainable city



البناء المستدام
Sustainable Building



A UNIQUE OPPORTUNITY
TO LIVE IN THE HEART
OF THE CITY





**THE RITZ-CARLTON
RESIDENCES**

DIRIYAH

The Ritz-Carlton Residences, Diriyah collection of 106 sumptuous villas is a truly exclusive opportunity for those looking to live in DIRIYAH™.

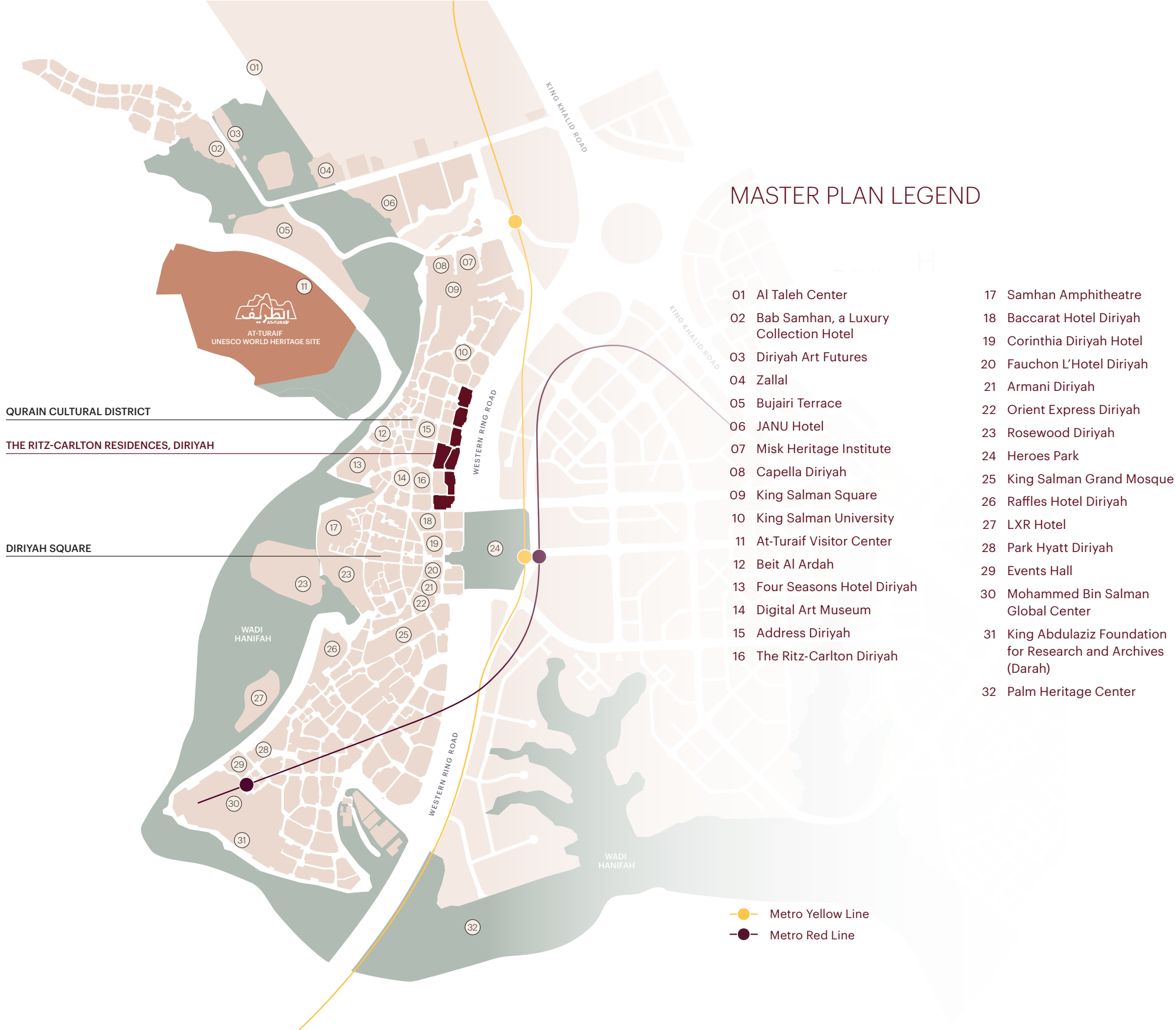
These spacious and sustainably-designed residences draw inspiration from the Najdi architecture, offering a seamless blend of indoor-outdoor living and modern interiors. Each villa is thoughtfully designed to provide an unparalleled quality of life, with

outstanding amenities and attractions right at their doorstep. From the moment you cross the threshold of your villa, you'll be enveloped in a world of elegance and sophistication. Diriyah offers a wealth of experiences within which to indulge, ensuring that each day brings new opportunities for discovery and enjoyment. Seize the chance to be among the few privileged to own an exquisite residence in this remarkable city.

EXPERIENCE THE FINEST OF DIRIYAH

Adjacent to The Ritz-Carlton Residences, Diriyah, the culturally enriched Qurain Cultural District is surrounded by seven cultural academies. Dive into the Digital Art Museum, embrace narratives at the Creative Writing Academy, and witness tradition at the Academy of Najdi Architecture & Mud Building. The Arab Music Academy, Theater Academy, and Culinary Academy further highlight the cultural richness.

The square offers a mix of retail, culinary gems, and elite hotels. Explore bustling souks, immerse in local ambiance, and marvel at the King Salman Grand Mosque's architectural brilliance. Culminate your journey with exquisite dining and choose from premier hotels, each echoing unparalleled service, making Diriyah Square a memorable destination.



MASTER PLAN LEGEND

- 01 Al Taleh Center
- 02 Bab Samhan, a Luxury Collection Hotel
- 03 Diriyah Art Futures
- 04 Zallal
- 05 Bujairi Terrace
- 06 JANU Hotel
- 07 Misk Heritage Institute
- 08 Capella Diriyah
- 09 King Salman Square
- 10 King Salman University
- 11 At-Turaif Visitor Center
- 12 Beit Al Ardah
- 13 Four Seasons Hotel Diriyah
- 14 Digital Art Museum
- 15 Address Diriyah
- 16 The Ritz-Carlton Diriyah
- 17 Samhan Amphitheatre
- 18 Baccarat Hotel Diriyah
- 19 Corinthia Diriyah Hotel
- 20 Fauchon L'Hotel Diriyah
- 21 Armani Diriyah
- 22 Orient Express Diriyah
- 23 Rosewood Diriyah
- 24 Heroes Park
- 25 King Salman Grand Mosque
- 26 Raffles Hotel Diriyah
- 27 LXR Hotel
- 28 Park Hyatt Diriyah
- 29 Events Hall
- 30 Mohammed Bin Salman Global Center
- 31 King Abdulaziz Foundation for Research and Archives (Darah)
- 32 Palm Heritage Center

QURAIN CULTURAL DISTRICT

THE RITZ-CARLTON RESIDENCES, DIRIYAH

DIRIYAH SQUARE

- Metro Yellow Line
- Metro Red Line

KEY HIGHLIGHTS



28

Of the world's most luxurious 5-star hotels



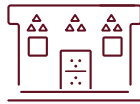
> 1,200

Luxury and lifestyle brands, fine-dining restaurants, and premium cafés



> 26

Cultural attractions



9

Museums



10+

Iconic Landmarks



16

Schools



1

University



8+

Public Parks



17KM+

Horse Riding & Biking Trails



> 2 SQ KM²

Of Wadi Hanifah restored



3 KM

Escarpment walk overlooking Wadi Hanifah

EXCLUSIVE SERVICES AND
BENEFITS FOR A UNIQUE
LIVING EXPERIENCE

Each owner of these unparalleled homes has at their fingertips the finest services and benefits offered by The Ritz-Carlton Residences, Diriyah from the hotel reservation service (HRS), which makes it easy to get around, to the on-site concierge service, which caters to their every whim. In addition to these exclusive services, residents also earn platinum membership in Marriott's Bonvoy loyalty programme, further enhancing the richness of their living experience.





ANTICIPATE A PERFECT DAY

PERSONAL SERVICES

Envision a day when every detail aligns seamlessly, where the comfort and well-being of your loved ones are not just assured but celebrated. The Ritz-Carlton Residences understand the invaluable, yet often unseen labor of love that goes into creating a nurturing environment for your family.

That's why you are offered a comprehensive suite of personal services designed to make your life easier and more enjoyable. From professional babysitting services to administrative assistance, The Ritz-Carlton Residences are committed to providing the highest level of care and support for you and your loved ones.



ritz kids

BAKE WONDERFUL MEMORIES

EVENT & FOOD SERVICES

In a city steeped in a grand tradition of hospitality, reveling in the joy of curating an unforgettable evening for your guests is a cherished practice. At The Ritz-Carlton Residences, we masterfully anticipate your every need to embrace the charm of effortless hosting. Our teams of event planners and personal chefs are dedicated to creating exquisite experiences tailored to your specific tastes and preferences.



YOUR RELIABLE COMPANION

CONCIERGE SERVICES

Juggling between personal and professional life can often feel like a daunting task. However, with the right support, it is possible to not only maintain a balance but truly enjoy both aspects of life. The Ritz-Carlton Residences stand ready to be your reliable confidant, your secret weapon in creating a life of ease and tranquility. From airline reservations, to restaurant recommendations - The Ritz-Carlton Residences offer a comprehensive suite of services to ensure that your personal and professional lives seamlessly coexist in perfect harmony.



EMBODYING YOUR IDEAL HOME

HOUSEHOLD & ENGINEERING

There's nothing quite like the warm embrace of a home that is precisely as you left it, every element in its rightful place. The Ritz-Carlton Residences not only offer luxurious living spaces but also provide a range of convenient services to ensure your home is always in perfect order. The handy-man and housekeeping services offered by The Ritz-Carlton Residences guarantee that your home will be impeccably cleaned and well maintained.



قصصنا كذا السحابة - كاميليا الجمال
السَّقَد
التي
سقطت على الأرض
التي



RIGHT AT YOUR DOORSTEP

DOORMAN, BELLMAN, BUTLER

Imagine a world where a supportive team is nestled within your community, ever-prepared to transform your daily chores into a realm of effortless ease. The Ritz-Carlton Residences take immense pride in fostering an environment where the rhythm of your daily life flows with unbroken serenity.



EMBRACE A LIFESTYLE OF ENERGIZING HARMONY

RECREATION & FITNESS

Maintaining constant motivation in the swirl of day-to-day life can be challenging. The Ritz-Carlton Residences curate a suite of recreational and fitness services to inspire a delightful ease into your wellness journey. We tend to your fitness needs with thoughtful precision.



INSPIRING A DIFFERENT WAY TO LIVE

RESIDENTS ONLY AMENITIES

The Ritz-Carlton Residences, Diriyah bring a new level of sophistication to the Kingdom. This exceptional living experience is designed with your well-being and quality of life in mind, offering a range of amenities and attractions just moments from your doorstep.

Residents will be enveloped in an unparalleled lifestyle that is unmatched in its attention to detail and commitment to excellence. Embrace this unique opportunity to live in a first-rate community that truly redefines the meaning of living.



OASIS OF COMFORT LIVING

The Ritz-Carlton Residences, Diriyah redefine quality-of-life living with an array of amenities and services that are unmatched. Within a few minutes' walk from home, residents can indulge in state-of-the-art fitness facilities. For those seeking relaxation, the residents' lounge offers a serene retreat where you can unwind and socialize with neighbors.

And if you're in the mood for some outdoor tranquility, the beautifully landscaped pools provide the perfect setting for a peaceful afternoon.

At The Ritz-Carlton Residences, Diriyah we set new benchmarks for extraordinary living, ensuring that our residents experience the utmost comfort and convenience.



EXPERIENCE THE FINEST
CRAFTSMANSHIP
WITH NAJDI STYLE



Select from a 3, 4 or 5 bedroom villa, in a choice of spacious layouts designed to cater to your family's needs. With three interior design options to choose from, exquisite marble floors, high-end appliances, and secluded courtyards meet the discerning standards of craftsmanship one would expect from a premium contemporary home.



Residents in The Ritz-Carlton Residences, Diriyah benefit from a strong connection with nature and light filled living spaces due to central courtyard gardens inspired by traditional Najdi design. Impeccably finished interiors create spaces for dining, entertaining and working. Crafted from the finest materials for the epitome of refined contemporary living, every detail of its configuration has been carefully considered.



CAPTIVATING INTERIOR OPTIONS

Re-imagined for modern living, The Ritz-Carlton Residences, Diriyah offer premium residences that reflect the unique materials and colors of Saudi Arabia's Najdi architectural style.

This style is celebrated for its purity, serene modesty, and functional beauty. Each residence embodies refined elegance and luxurious comfort while exuding an aura of calm, spaciousness, and light.





NAJDI

Echoing the Najdi design of centuries past, the Najdi option is the most traditional and authentic of the interior styles, blending harmoniously with the external mud-brick architectural style.



LIGHT NAJDI

The Light Najdi option subtly references authentic Najdi design and philosophy, while simultaneously introducing clean lines and a lighter palette for a fresh, modern feel that celebrates both the old and the new.



CONTEMPORARY

With its sleek and sophisticated minimalist design, the Contemporary option is the most modern of the three interiors, creating a beautiful contrast with the traditional Najdi-inspired architecture.

SPACES TO RETREAT AND RELAX

Enjoy indoor-outdoor living throughout the year in blissfully serene spaces. Dine against the backdrop of the stars on the rooftop terrace or in the shaded

courtyard designed to maintain cooler temperatures in summer. Select villas feature rooftop pools where you can relax and swim in the privacy of your own home.



COURTYARD VILLA

FIVE BEDROOM ~841M²

Total Internal Area	~606m ²
Total External Area	~235m ²



Ground Floor



First Floor



Second Floor

COURTYARD VILLA

FOUR BEDROOM ~830M²

Total Internal Area	~553m ²
Total External Area	~277m ²



Ground Floor



First Floor



Second Floor

VILLA TYPE 1

THREE BEDROOM ~452M²

Total Internal Area	~327m ²
Total External Area	~125m ²



Ground Floor



First Floor



Second Floor

VILLA TYPE 2

THREE BEDROOM ~414M²

Total Internal Area	~304m ²
Total External Area	~110m ²



Ground Floor





First Floor



Second Floor

VILLA TYPE 3

THREE BEDROOM ~342M²

Total Internal Area	~266m ²
Total External Area	~76m ²



Ground Floor



First Floor



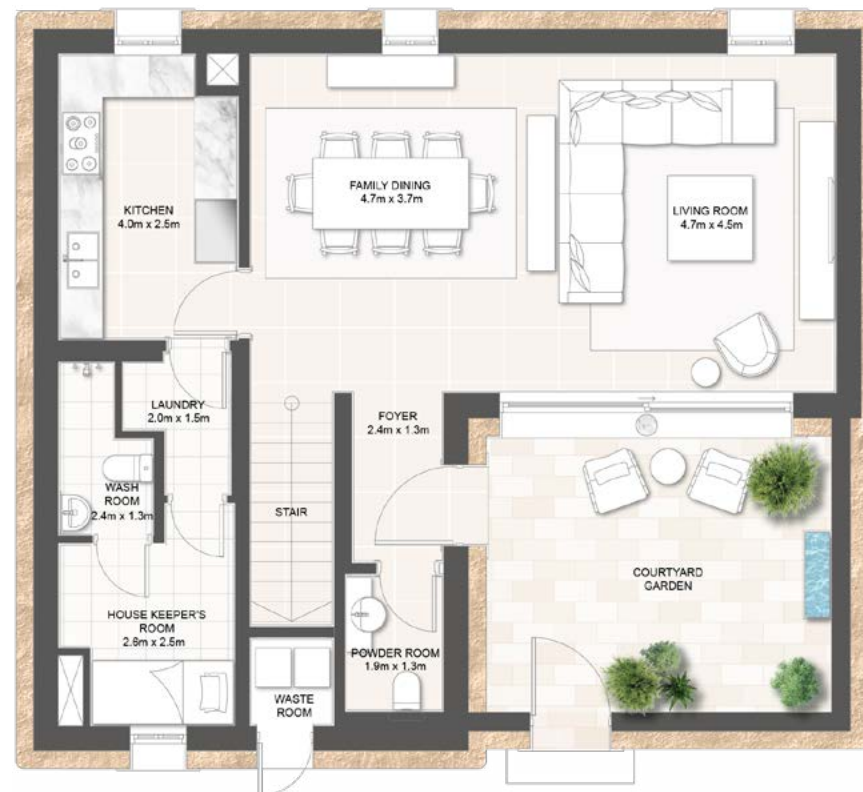
Second Floor

VILLA TYPE 4

THREE BEDROOM ~325M²

Total Internal Area ~248m²

Total External Area ~77m²



Ground Floor



First Floor



Second Floor

BESPOKE SPECIFICATIONS



NAJDI

DINING, LIVING ROOM AND STAIRS

FLOORS: Imported Marble Tiles

WALLS: Decorative Paint with Special Effect

CEILINGS: False ceiling with traditional Najdi design

STAIRS HANDRAIL: Timber handrail on top of solid balustrade in decorative paint with special effect

KITCHEN

FLOORS: Imported Marble Tiles

WALLS: Decorative Paint with Special Effect

CEILINGS: Moisture resistant false ceiling with matt paint finish | Imported kitchen fixtures (brushed metal finish) | Stainless steel undermount sink

APPLIANCES

Integrated Fridge | Integrated Cooktop | Integrated Wall Oven | Kitchen Rangehood Exhaust | Integrated Dishwasher | Integrated Microwave Oven

OTHER FITTINGS

Warm timber finish kitchen cabinets | Engineered Stone Countertops & Splash-backs

MASTER BEDROOM

FLOORS: Imported Marble Tiles

WALLS: Decorative Paint with Special Effect

CEILINGS: False ceiling with traditional Najdi design

WARDROBE: Warm timber finish with decorative metal studs

MASTER ENSUITE BATHROOMS

FLOORS: Imported marble tiles

WALLS: Imported marble tiles

CEILINGS: Moisture resistant false ceiling with matt paint finish

SANITARYWARE

Free-standing bath (Courtyard Villas & Type 3 Villa only) | White wall-hung W.C & concealed cistern | Imported Stone wash basin

SANITARY FIXTURES

Imported sanitary fixtures (brushed metal finish) | Hand & rain head shower

OTHER FITTINGS

Shower screen | Brushed metal framed vanity mirror | 2 vanity wall sconces lighting | Engineered stone countertop with warm timber vanity joinery

SECONDARY BEDROOMS

FLOORS: Imported Marble Tiles

WALLS: Decorative Paint with Special Effect

CEILINGS: False ceiling with matt paint finish

WARDROBE: Warm timber finish with decorative metal studs

SECONDARY BATHROOMS & POWDER ROOM

FLOORS: Imported marble tiles

WALLS: Imported marble tiles

CEILINGS: Moisture resistant false ceiling with matt paint finish

SANITARYWARE

White wall-hung W.C & concealed cistern | Under counter ceramic white wash basin (excluding powder room) | Semi recessed basin (excluding secondary bathrooms)

SANITARY FIXTURES

Imported sanitary fixtures (brushed metal finish) | Hand & rain head shower (excluding powder room)

OTHER FITTINGS

Shower screen (excluding powder room) | Brushed metal framed vanity mirror | 2 vanity wall sconces lighting (excluding secondary bathrooms) | Engineered stone countertop with warm timber vanity joinery

STANDARD SPECIFICATIONS

HEATING & COOLING

Fully ducted dual function air-conditioning system

OTHER ITEMS

PASSENGER ELEVATOR: Passenger elevator to courtyard villas servicing all levels

WATER HEATER: Water heater servicing all wet areas

GARAGE (COURTYARD VILLA ONLY)

FLOORS: Locally sourced limestone

WALLS: Adobe mud render

CEILINGS: Matt paint finish

GARAGE DOOR: Timber finish with Najdi decorative pattern

HOUSE KEEPER'S, DRIVERS, STORAGE ROOM & LAUNDRY ROOM

FLOORS: Ceramic tiles

WALLS: Matt paint finish

CEILINGS: False ceiling with matt paint finish

SANITARYWARE: white ceramic washbasin | Freestanding W.C

SANITARY FIXTURES: Polished chrome sanitaryware

(including wall-mounted shower set)

OTHER FITTINGS: Split system air-conditioning

EXTERNAL FINISHES

FAÇADE: Traditional mud render with Najdi features

EXTERNAL COURTYARDS & BALCONIES

FLOORS: Locally sourced limestone paving to ground floor courtyards |

Imported porcelain tiles to balcony and terrace

WALLS: Traditional mud render

OTHER FITTINGS

Plunge pool (courtyard villas only)

ENTRY DOORS

Timber doors, handles in bronze metal finish

INTERNAL DOORS

Warm timber finish with decorative bronze metal studs



LIGHT NAJDI

DINING, LIVING ROOM AND STAIRS

FLOORS: Imported Marble Tiles

WALLS: Decorative Paint with Special Effect

CEILINGS: False ceiling with matt paint finish

STAIRS HANDRAIL: Timber handrail on top of solid balustrade in decorative paint with special effect

KITCHEN

FLOORS: Imported Marble Tiles

WALLS: Decorative Paint with Special Effect

CEILINGS: Moisture resistant false ceiling with matt paint finish | Imported kitchen fixtures (brushed metal finish) | Stainless steel undermount sink

APPLIANCES

Integrated Fridge | Integrated Cooktop | Integrated Wall Oven | Kitchen Rangehood Exhaust | Integrated Dishwasher | Integrated Microwave Oven

OTHER FITTINGS

Light Timber Finish Kitchen Cabinets | Engineered Stone Countertops & Splash-backs

MASTER BEDROOM

FLOORS: Imported Marble Tiles

WALLS: Decorative Paint with Special Effect

CEILINGS: False ceiling with matt paint finish

WARDROBE: Light timber finish with decorative metal studs

MASTER ENSUITE BATHROOMS

FLOORS: Imported marble tiles

WALLS: Imported marble tiles

CEILINGS: Moisture resistant false ceiling with matt paint finish

SANITARYWARE

Free-standing bath (courtyard villas & type 3 villa only) | White wall-hung W.C & concealed cistern | Imported Stone wash basin

SANITARY FIXTURES

Imported sanitary fixtures (brushed metal finish) | Hand & rain head shower

OTHER FITTINGS

Shower screen | Brushed metal framed vanity mirror | 2 vanity wall sconces lighting | Engineered stone countertop with light timber vanity joinery

SECONDARY BEDROOMS

FLOORS: Imported Marble Tiles

WALLS: Decorative Paint with Special Effect

CEILINGS: False ceiling with matt paint finish

WARDROBE: Light timber finish with decorative brass studs

SECONDARY BATHROOMS & POWDER ROOM

FLOORS: Imported marble tiles

WALLS: Imported marble tiles



CONTEMPORARY

CEILINGS: Moisture resistant false ceiling with matt paint finish

SANITARYWARE

White wall-hung W.C & concealed cistern | Under counter ceramic white wash basin (excluding powder room) | Semi recessed washbasin (excluding secondary bathrooms)

SANITARY FIXTURES

Imported sanitary fixtures (brushed metal finish) | Hand & rain head shower (excluding powder room)

OTHER FITTINGS

Shower screen (excluding powder room) | Brushed metal framed vanity mirror | 2 vanity wall sconces lighting (excluding secondary bathrooms) | Engineered stone countertop with light timber vanity joinery

STANDARD SPECIFICATIONS

HEATING & COOLING

Fully ducted dual function air-conditioning system

OTHER ITEMS

PASSENGER ELEVATOR: Passenger elevator to courtyard villas servicing all levels
WATER HEATER: Water heater servicing all wet areas

GARAGE (COURTYARD VILLA ONLY)

FLOORS: Locally sourced limestone

WALLS: Adobe mud render

CEILINGS: Matt paint finish

GARAGE DOOR: Timber finish with Najdi decorative pattern

HOUSE KEEPER'S, DRIVERS, STORAGE ROOM & LAUNDRY ROOM

FLOORS: Ceramic tiles

WALLS: Matt paint finish

CEILINGS: False ceiling with matt paint finish

SANITARYWARE: White ceramic washbasin | Freestanding W.C

SANITARY FIXTURES: Polished chrome sanitaryware

(including wall-mounted shower set)

OTHER FITTINGS: Split system air-conditioning

EXTERNAL FINISHES

FAÇADE: Traditional mud render with Najdi features

EXTERNAL COURTYARDS & BALCONIES

FLOORS: Locally sourced limestone paving to ground floor courtyards |

Imported porcelain tiles to balcony and terrace

WALLS: Traditional mud render

OTHER FITTINGS

Plunge pool (courtyard villas only)

ENTRY DOORS

Timber doors, handles in brushed metal finish

INTERNAL DOORS

Light timber finish with decorative brushed metal studs

DINING, LIVING ROOM AND STAIRS

FLOORS: Imported Marble Tiles

WALLS: Matt Paint Finish

CEILINGS: False ceiling with matt paint finish

STAIRS HANDRAIL: Timber handrail on top of solid balustrade in matt paint finish

KITCHEN

FLOORS: Imported Marble Tiles

WALLS: Matt Paint Finish

CEILINGS: Moisture resistant false ceiling with matt paint finish | Imported

kitchen fixtures (brushed metal finish) | Stainless steel undermount sink

APPLIANCES

Integrated Fridge | Integrated Cooktop | Integrated Wall Oven | Kitchen

Rangehood Exhaust | Integrated Dishwasher | Integrated Microwave Oven

OTHER FITTINGS

Upper kitchen cabinets in white colour and lower in light timber finish |

Engineered stone countertops & Splash backs

MASTER BEDROOM

FLOORS: Imported Marble Tiles

WALLS: Matt Paint Finish

CEILINGS: False ceiling with matt paint finish

WARDROBE: White lacquered finish

MASTER ENSUITE BATHROOMS

FLOORS: Imported marble tiles

WALLS: Imported marble tiles

CEILINGS: Moisture resistant false ceiling with matt paint finish

SANITARYWARE

Free-standing bath (courtyard villas & type 3 villa only) | White wall-hung W.C & concealed cistern | Over counter white stone washbasin

SANITARY FIXTURES

Imported sanitary fixtures (brushed metal finish) | Hand & rain head shower

OTHER FITTINGS

Shower screen | Brushed metal framed vanity mirror | 2 vanity wall sconces lighting | Engineered stone countertop with light timber vanity joinery

SECONDARY BEDROOMS

FLOORS: Imported Marble Tiles

WALLS: Matt Paint Finish

CEILINGS: False ceiling with matt paint finish

WARDROBE: White lacquered finish

SECONDARY BATHROOMS & POWDER ROOM

FLOORS: Imported marble tiles

WALLS: Imported marble tiles

CEILINGS: Moisture resistant false ceiling with matt paint finish

SANITARYWARE

White wall-hung W.C & concealed cistern | Under counter ceramic white wash basin (excluding powder room) | Semi recessed washbasin (excluding secondary bathrooms)

SANITARY FIXTURES

Imported sanitary fixtures (brushed metal finish) | Hand & rain head shower (excluding powder room)

OTHER FITTINGS

Shower screen (excluding powder room) | Brushed metal framed vanity mirror | 2 vanity wall sconces lighting (excluding secondary bathrooms) | Engineered stone countertop with light timber vanity joinery

STANDARD SPECIFICATIONS

HEATING & COOLING

Fully ducted dual function air-conditioning system

OTHER ITEMS

PASSENGER ELEVATOR: Passenger elevator to courtyard villas servicing all levels
WATER HEATER: Water heater servicing all wet areas

GARAGE (COURTYARD VILLA ONLY)

FLOORS: Locally sourced limestone

WALLS: Adobe mud render

CEILINGS: Matt paint finish

GARAGE DOOR: Timber finish with Najdi decorative pattern

HOUSE KEEPER'S, DRIVERS, STORAGE ROOM & LAUNDRY ROOM

FLOORS: Ceramic tiles

WALLS: Matt paint finish

CEILINGS: False ceiling with matt paint finish

SANITARYWARE: White ceramic washbasin | Freestanding W.C

SANITARY FIXTURES: Polished chrome sanitaryware

(including wall-mounted shower set)

OTHER FITTINGS: Split system air-conditioning

EXTERNAL FINISHES

FAÇADE: Traditional mud render with Najdi features

EXTERNAL COURTYARDS & BALCONIES

FLOORS: Locally sourced limestone paving to ground floor courtyards |

Imported porcelain tiles to balcony and terrace

WALLS: Traditional mud render

OTHER FITTINGS

Plunge pool (courtyard villas only)

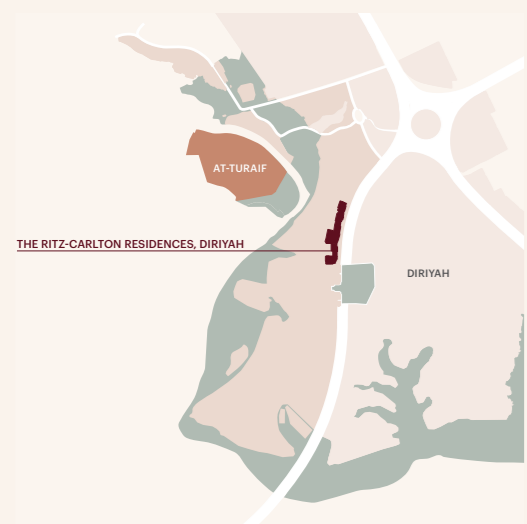
ENTRY DOORS

Timber doors, handles in brushed metal finish

INTERNAL DOORS

White lacquered finish. Handles in brushed metal finish

THE RITZ-CARLTON RESIDENCES SITE PLAN





Artist impression, landscaping and architecture is indicative only and subject to Diriyah Gate Company limited change and approval

Diriyah Gate Company Limited Disclaimer

1. The contents of this brochure were produced prior to planning, approving and commencement of construction. Parts of the land surrounding the development shown may not form part of Diriyah Gate Company Limited development site and may not be developed at the time of project completion.
2. The information, images and artistic impressions depicting interiors and exteriors, including nearby amenities, public areas and streetscapes contained and any other specifications or measurements in this brochure are indicative only and are not to be treated as an offer and/or contract or relied on as representative of the final product. Views, outlooks, and descriptions of views may vary depending on the level and location of the dwelling.
3. Furniture and styling are indicative only and are not included with the dwelling.

The Ritz-Carlton Residences Disclaimer

The Ritz-Carlton Residences, Diriyah are not owned, developed or sold by The Ritz-Carlton Hotel Company, L.L.C. or its affiliates ("Ritz-Carlton"). Diriyah Gate Company Limited uses The Ritz-Carlton marks under a license from Ritz-Carlton, which has not confirmed the accuracy of any of the statements or representations made herein.



**THE RITZ-CARLTON
RESIDENCES**

DIRIYAH