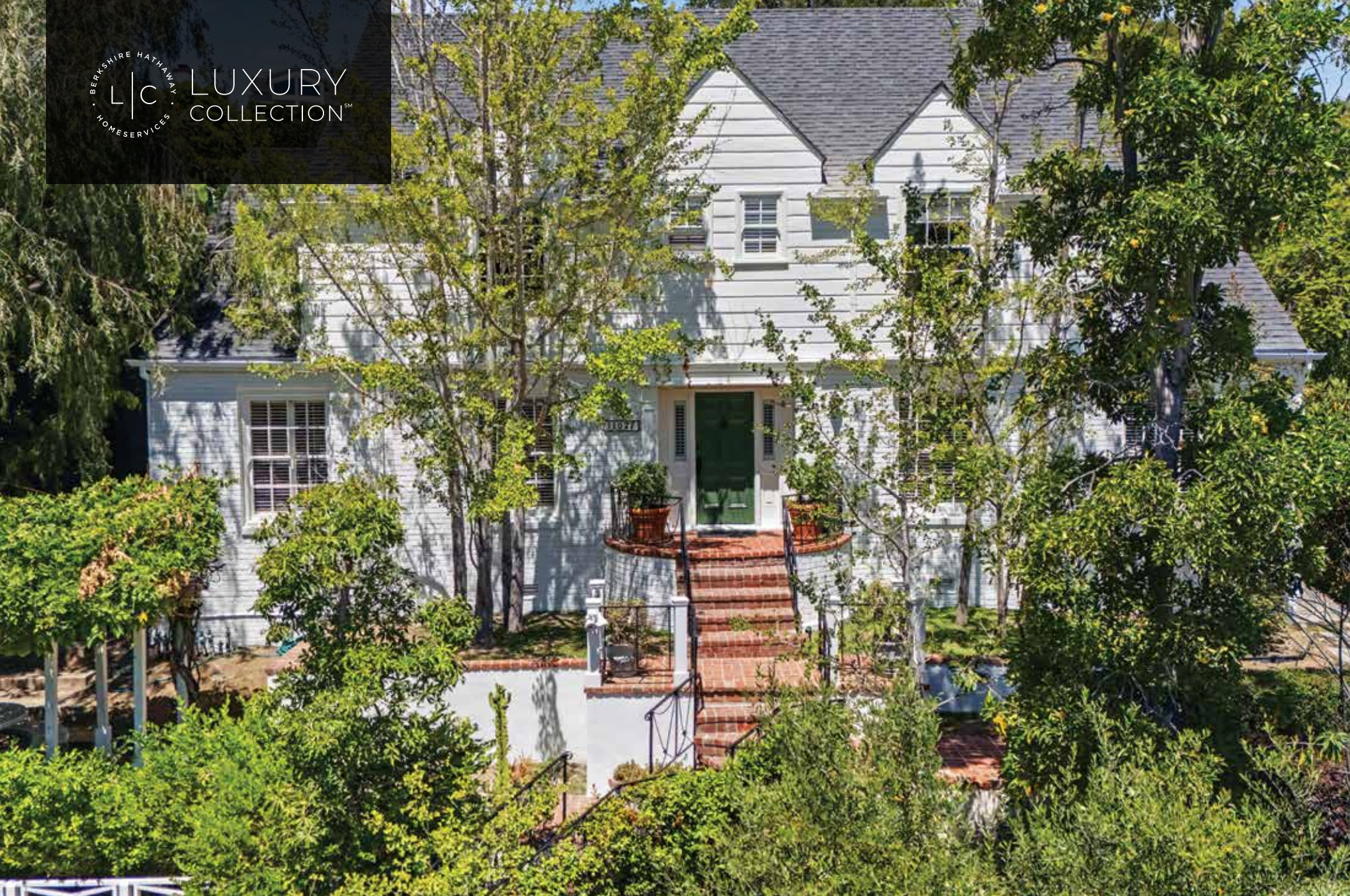




LUXURY
COLLECTIONSM



11027 Cashmere Street
Westwood Hills





Gracefully sited upon a gentle knoll in much-admired Westwood Hills, this warm two-story Traditional home embodies the character and easy livability that define a timeless family home.

Thoughtful updates over the years have consistently respected its classic architectural sensibility and have created a three-bedroom, three-bath haven with an inviting, sensible floorplan designed for both comfortable everyday living and effortless entertaining.

A welcoming entry introduces interiors steeped in rich in traditional detail and quiet elegance.

The formal living room, anchored by a lovely fireplace, offers a gracious setting for memorable gatherings.

The formal dining room provides a refined backdrop for fabulous dinner parties.

Throughout the home, spaces transition with ease, with easy flow from room-to-room.







Upstairs, the primary suite is appointed with an ensuite bath with a separate shower and soaking tub, dual walk-in and walk-through closets, and a private lounging deck overlooking the backyard and its surrounding greenery. Two additional large family bedrooms share a full bath, offering flexibility and functionality for family or guests.





The expansive great room serves as the natural gathering place with its generous family room, informal dining area and custom cook's kitchen. These spaces come together in one beautifully integrated space and easily open to the backyard patio area.

Designed to inspire both everyday meals and weekend entertaining, the kitchen features a substantial center island, top-tier appliances, abundant custom built-ins, and thoughtful workspaces.

Just off the kitchen, a dedicated office with a built-in desk and cabinetry provides an ideal work-from-home environment or household command center. A comfortable den and powder room complete the main level.

Sunlight and garden views create a seamless connection between indoors and out, enhancing the home's relaxed California sensibility. The expansive backyard has been thoughtfully designed with a series of inviting moments for entertaining, sports and recreation and, of course, relaxation. Multiple alfresco patio spaces are host to dining beneath the stars and casual lounging; a built-in spa offers a peaceful place to unwind.

There's a grassy play area, vegetable garden, sport court, and more creating a rare sense of privacy, space, and versatility.



11027Cashmere.com



**BERKSHIRE
HATHAWAY** | CALIFORNIA
HOMESERVICES | PROPERTIES

Larry Young

Berkshire Hathaway HomeServices
California Properties

REALTOR®
Luxury Properties Director

310.777.2879

larry@larryyoungassociates.com

DRE# 00999537

LARRY YOUNG + ASSOCIATES

PROPERTY FACTS

- 3 Bedrooms | 3 Bathrooms
- 3,273 SF Living Area | 9,015 SF Lot
- Close proximity to UCLA, Westwood Village, Century City & Beverly Hills
- Warner Avenue Elementary School District

