

# **HOBCK HIDEOUT**

A dramatic sunset sky with orange and yellow clouds over a dark treeline. The sky is filled with scattered, glowing clouds in shades of orange, yellow, and blue. The bottom of the image shows the dark silhouettes of trees against the bright light of the setting sun.

**841.65 ACRES**

**7787 E US HWY 190 -- Schleicher County, TX**



2,400 sq. ft. barndominium, including 1,800 sq. ft. of comfortable living space, a 600 sq. ft. shop & 1,200 sq. ft. of attached porches.













Pond 2







# 5 Hunting Locations



- 1) Deer blind w/2 nice chairs
- 1) Tripod
- 1) Corn feeder
- 1) Protein feeder

At each location



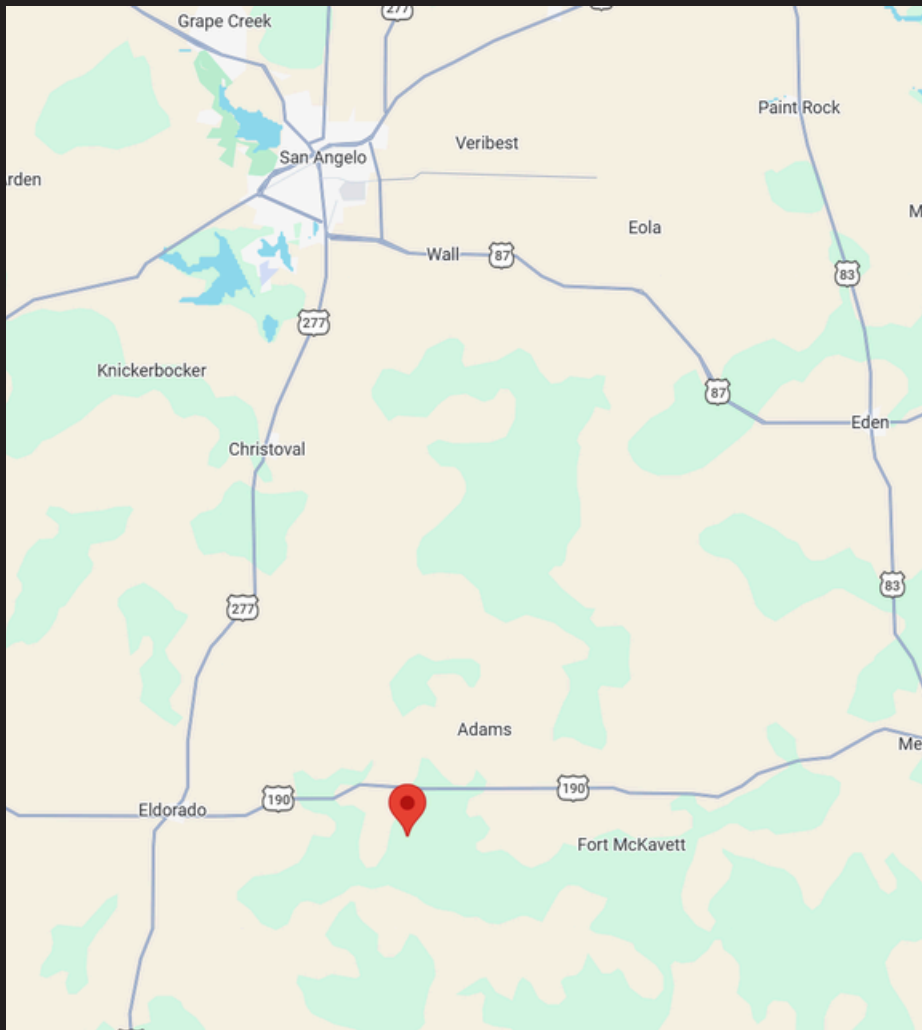
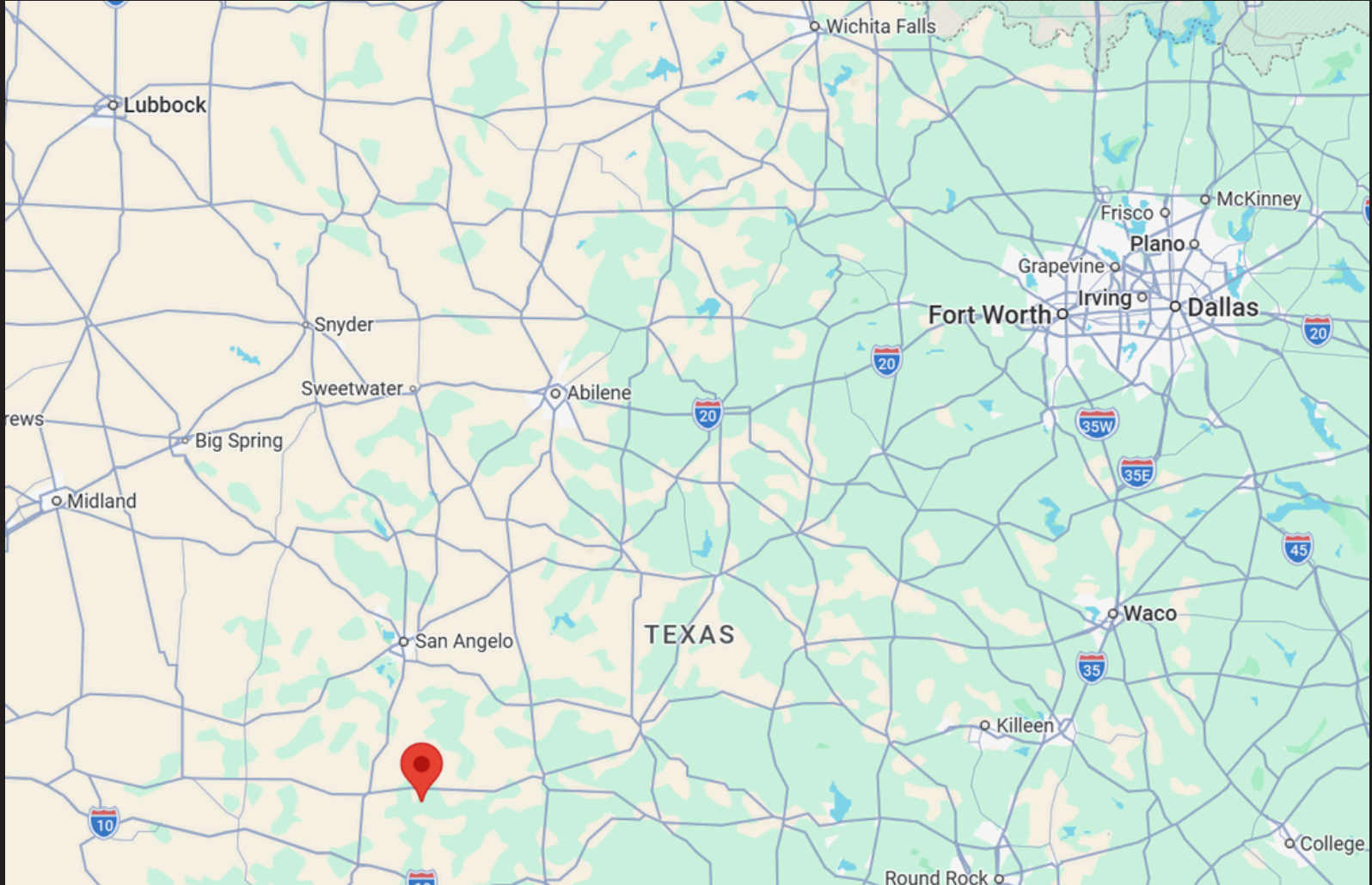


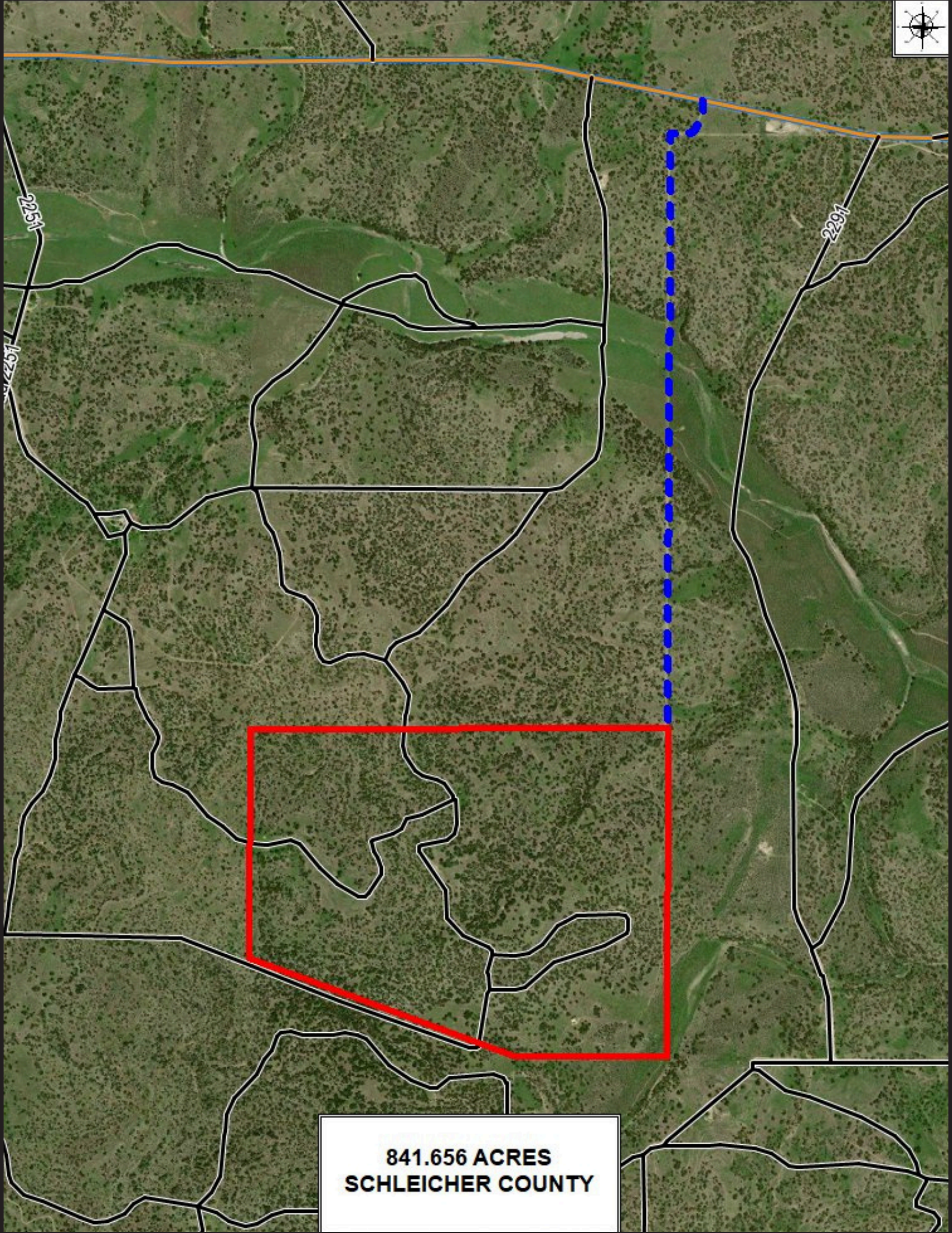




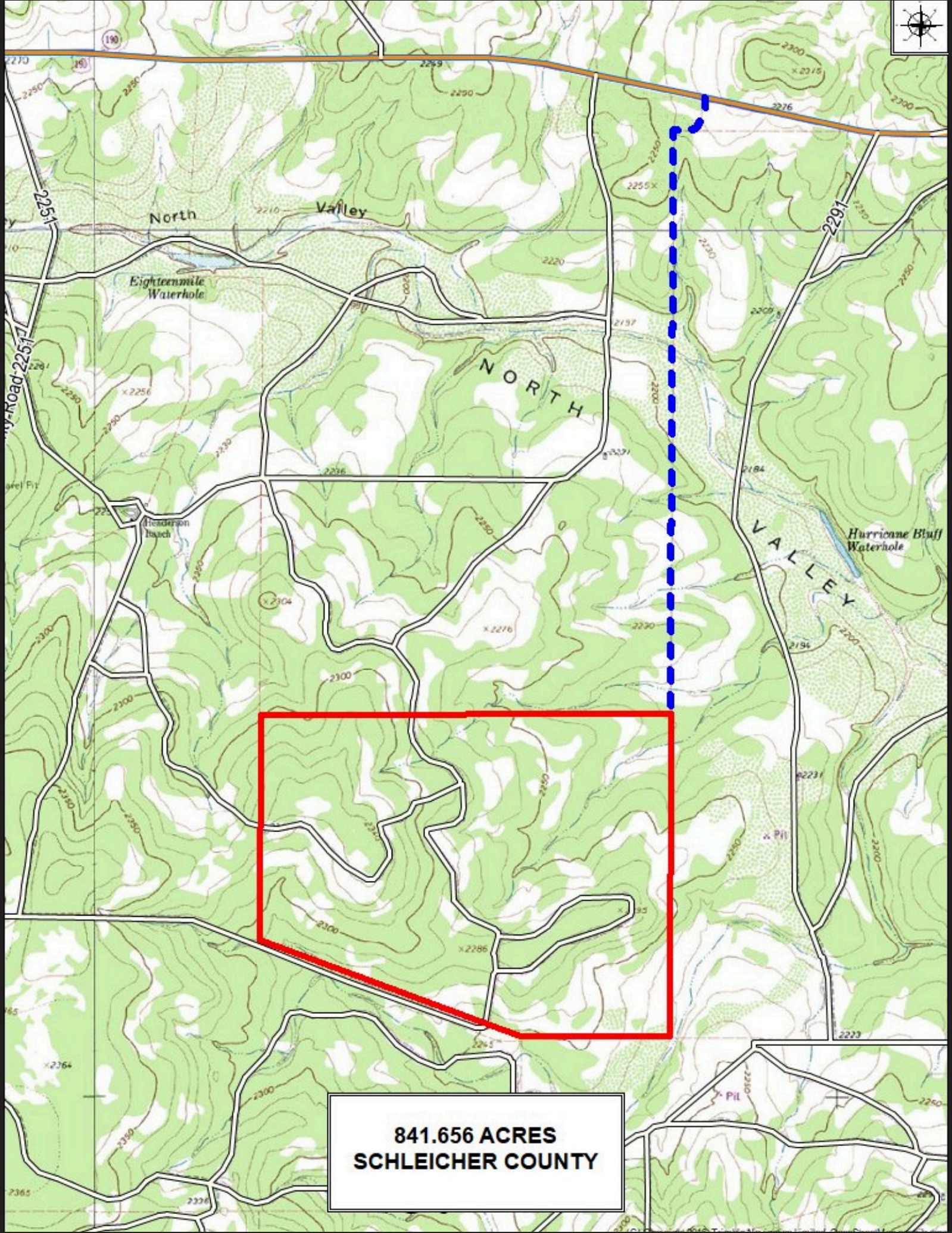








**841.656 ACRES  
SCHLEICHER COUNTY**



**841.656 ACRES  
SCHLEICHER COUNTY**

## Turn-Key Recreational Hideaway in Northwest Hill Country - East Central Schleicher County

If you've been searching for a secluded, private recreational hunting retreat, this is it. Nestled in the scenic northwest Hill Country of east central Schleicher County, this exceptional property offers the perfect escape from the hustle and bustle of everyday life.

Located south of US 190 within the prestigious Henderson Ranch, the property is accessed by a private easement, ensuring privacy and exclusivity. Surrounded by native terrain and abundant wildlife, this turnkey retreat is ready for immediate enjoyment—whether you're looking for a weekend getaway, hunting destination, or long-term recreational investment.

This property features a beautifully designed 2,400 sq. ft. barndominium, including 1,800 sq. ft. of comfortable living space, a 600 sq. ft. shop and 1,200 sq. ft. of attached porches. The home offers a spacious kitchen with granite countertops and custom cabinetry, a welcoming living area, two bedrooms, and two full bathrooms. Interior finishes include stained concrete flooring and painted, textured walls and ceilings, creating a stylish yet durable living environment. \* All furnishings and content in shop convey.

The ranch includes five (5) 4'x6' deer blinds with nice chairs, five (5) tripods, five (5) corn feeders, and five (5) protein feeders, all of which convey with the property and are strategically placed throughout the ranch.

Two water wells equipped with submersible pumps provide reliable water access. These wells supplement two nearby stock tanks, and one well also supplies potable water directly to the barndominium.

The property is heavily wooded, featuring a diverse mix of live oaks, scattered cedar, and mesquite, along with native grasses and underbrush typical of this region. The terrain is gently rolling to sloping in nature, offering both scenic beauty and excellent habitat diversity.

Wildlife is abundant and includes white-tailed deer, turkey, quail, dove, feral hogs, and several species of exotic game.

Experience wide-open skies, rugged natural beauty, and the tranquility that only the Texas Hill Country can provide.

**Co-Listed By**

**Alan Drennan - Listing Broker**

**325-315-1515 - Cell**

**alan@drennanrealestategroup.com**

**www.drennanrealestategroup.com**

**Robert A. Elliott - Listing Broker**

**325-656-9020 - Cell**

**eassoc@wcc.net**

**\$2,800,000**



**Drennan**  
REAL ESTATE GROUP, LLC

