

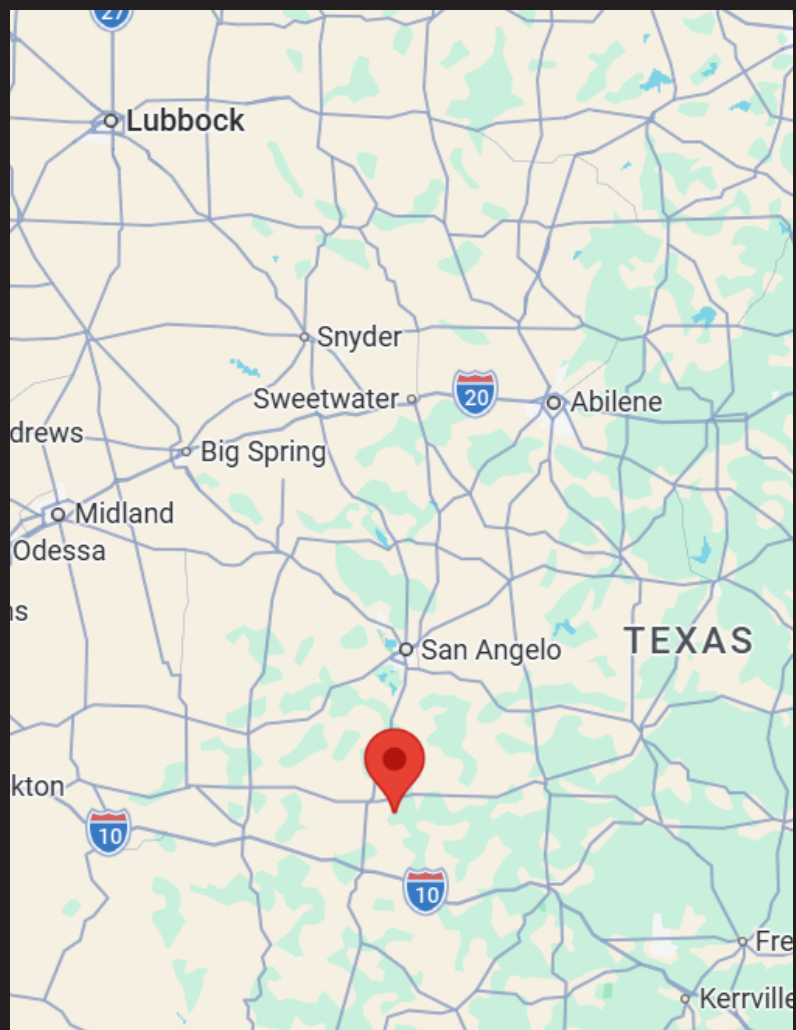
# 200 Acres Schleicher County





- Approximately 7 miles southeast of Eldorado
- Electricity provided by SWTEC is nearby
- Property has been apart of an extensive wildlife management program for 20 plus years
- Paved CR access



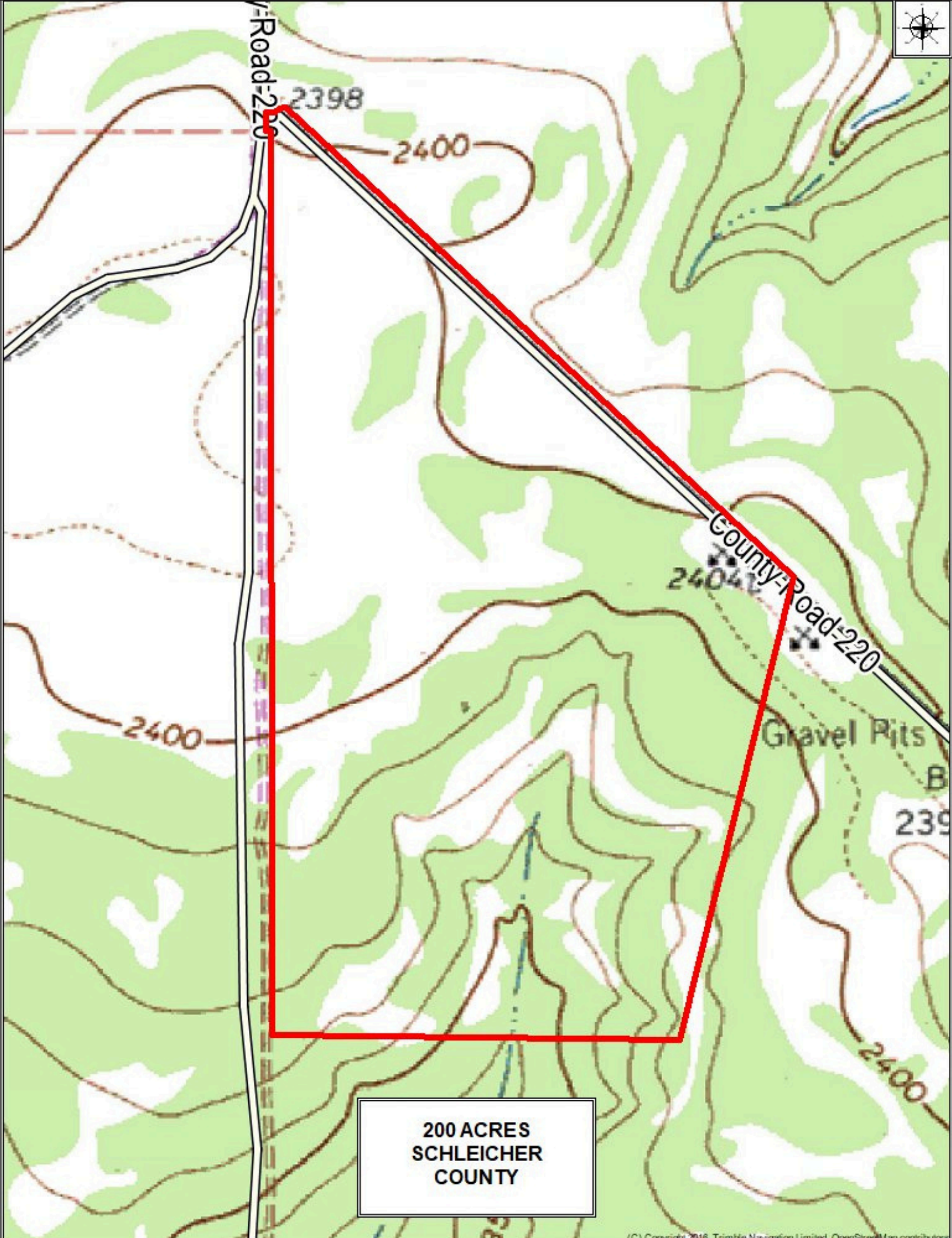




Road-220

County Road-220

200 ACRES  
SCHLEICHER  
COUNTY



County Road 220

2398

2400

County Road 220

2404

2400

Gravel Pits

239

2400

200 ACRES  
SCHLEICHER  
COUNTY

# 0000 CR 220 Eldorado

Nice recreational/investment tract with paved CR access, approximately 7 miles southeast of Eldorado. Good mixture of liveoak, with small amounts of cedar and mesquite. There is a windmill with a concrete storage tank. Electricity provided by SWTEC is nearby. Property has been apart of an extensive wildlife management program for 20 plus years. Don't miss out on this opportunity to acquire this 200 acres withh a blank canvas that is not located in a subdivison, yet still convientently located close to Eldorado.



**\$700,000**



**Drennan**  
REAL ESTATE GROUP, LLC

**Alan Drennan - Listing Broker**

**Cell: 325-315-1515**

**[alan@drennanrealestategroup.com](mailto:alan@drennanrealestategroup.com)**

**[www.drennanrealestategroup.com](http://www.drennanrealestategroup.com)**

## Disclaimer

The information contained herein is compiled from resources believed to be accurate. No warranties on the state of ownership of real or any personal property nor any representation as to its accuracy are made by Drennan Real Estate Group, LLC and/or its agents/brokers. 350 W Highland San Angelo, TX 76903