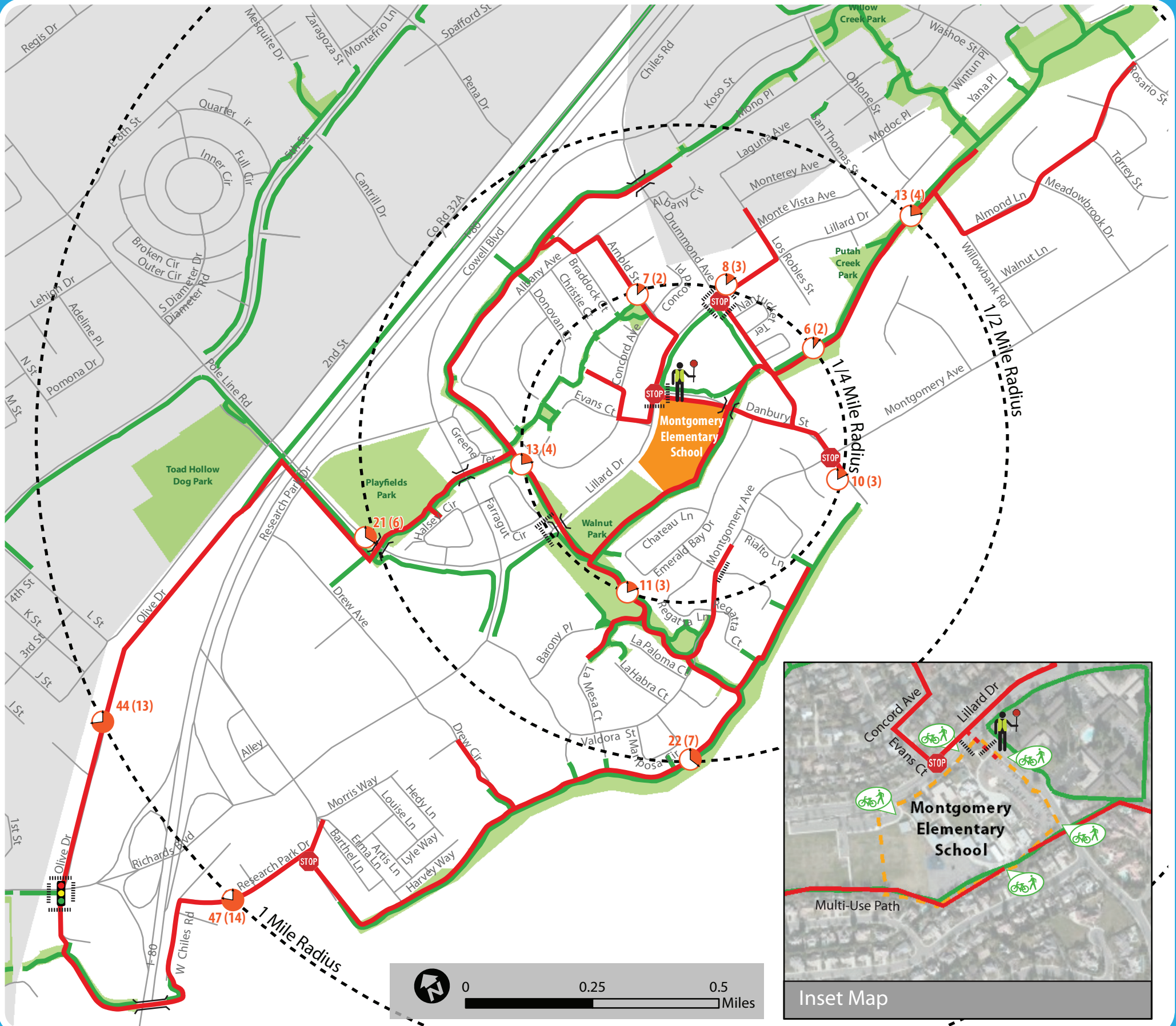


Montgomery Elementary: Suggested Walking and Biking Routes



How to Use This Map

This suggested route to school map is intended to encourage adults and students to consider walking or bicycling to school. Adults are responsible for choosing the most appropriate option based on their knowledge of the different routes and the skill level of their student.

This map includes suggested routes as well as the locations of traffic signals, crosswalks, four-way stops, crossing guards, and off-street paths.

To see routes and areas beyond this map please visit: <http://street-smarts.cityofdavis.org/>

Drop-Off and Pick-Up Information:

We strongly encourage students to walk or bike to school. Students riding bikes must wear a helmet. You must bring your own lock and lock your bike at the designated bike racks. All riders must dismount and remember to always walk bikes once they are on campus.

Drop-off: Please plan to arrive between 8:10 and 8:25. There is plenty of parking in the lot on Lillard, and limited parking at the front of the school. Parents using the circle drive in front may not park or leave their vehicles. Student greeters are available to escort younger children onto campus. It is against the law to use your hands on a phone while driving. Please put down your phone and focus on driving safely.

Pick-up: Students may be picked up at the parking lot on Lillard, the bike racks, or the front of the school. Supervision of students is only provided in the front of the school. Parents who are waiting for pick-up on campus may gather at the front of the school or in front of the Family Resource Center.

LEGEND

- Suggested Route (Walking and Biking)
- Est. Walking Time (Biking Time)
- Crossing Guard Location
- Marked Crosswalk
- Pedestrian & Bicycle Bridge or Tunnel
- Pedestrian and Bicycle Access
- Multi-use Path
- Bicycle Parking
- Traffic Signal
- All-Way Stop
- Enrollment Area
- Parks and Open Space
- School