

RETAIL BUILDING FOR SALE

# 2011 - 2013 LINCOLN BLVD

SANTA MONICA, CA 90405







# 2011 - 2013

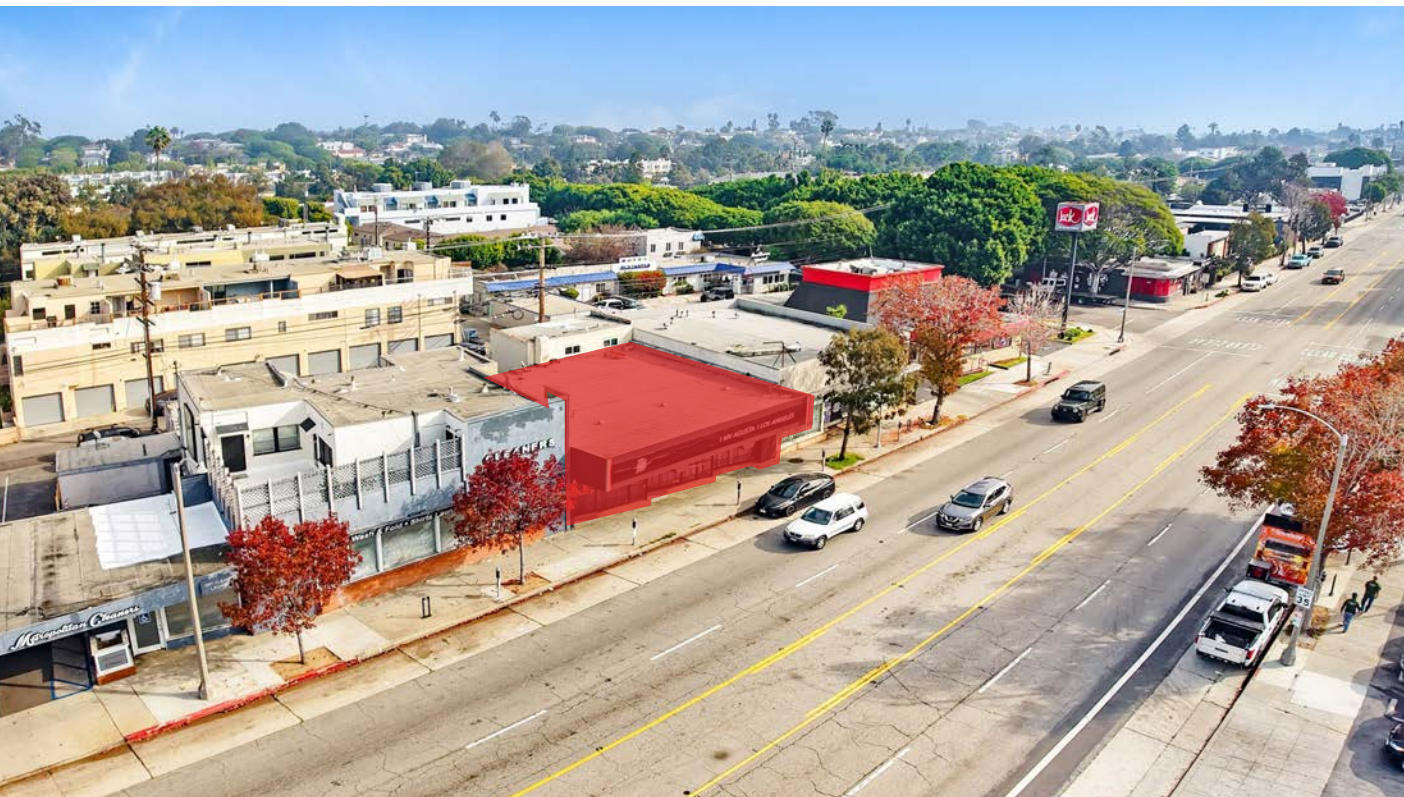
## LINCOLN BLVD

### PROPERTY DETAILS

<b>PREMISES:</b> ± 2,300 SF	<b>LAND SIZE</b> 3,920 SF	<b>ZONING</b> SMC4
<b>FOR SALE</b> \$2,100,000	<b>PRICE PER SF</b> \$913.04	

#### FEATURES:

- Owner user or investor opportunity
- Ideal for showroom, auto or general retail uses
- Current rents: \$9,850 per month
- Excellent visibility along Lincoln Boulevard, a primary Santa Monica arterial connecting Venice, Marina del Rey, and the Westside
- Prime signage opportunity
- Strong daily traffic counts providing consistent street exposure







A DIVISION OF  
LEE &  
ASSOCIATES

NE

U.S.



## INTERIOR PHOTOS





## INTERIOR PHOTOS (UPSTAIRS STUDIO)





## NEARBY AMENITIES





## AREA OVERVIEW

---

### SANTA MONICA

Santa Monica is a vibrant coastal city on the western edge of Los Angeles, known for its iconic beaches, mild year-round climate, and laid-back yet energetic lifestyle. The city blends natural beauty with a strong urban character, offering walkable neighborhoods, tree-lined streets, and a wide range of dining, shopping, and cultural attractions. Popular areas such as Downtown Santa Monica, Main Street, and Montana Avenue each have their own distinct personality, contributing to the city's dynamic and diverse feel.

Beyond its scenic coastline and famous pier, Santa Monica is recognized for its emphasis on sustainability, outdoor living, and community-oriented design. Residents and visitors enjoy easy access to parks, bike paths, and oceanfront amenities, along with a calendar of events that reflects the city's creative and active culture. With its mix of beach-town charm and metropolitan convenience, Santa Monica remains one of Southern California's most desirable places to live, work, and visit.





# DEMOGRAPHICS

## 2024 POPULATION

284,415	1,170,536	3,350,831
2 MILES	5 MILES	10 MILES

## 2029 PROJECTION

278,463	1,133,275	3,239,434
2 MILES	5 MILES	10 MILES

## MEDIAN AGE

36.4	36.7	37.9
2 MILES	5 MILES	10 MILES

## AVERAGE HOUSEHOLD INCOME

\$72,165	\$78,384	\$93,637
2 MILES	5 MILES	10 MILES

## INCOME OVER \$200k

7,037	28,768	124,042
2 MILES	5 MILES	10 MILES

## 2029 HOUSEHOLD PROJECTION

112,551	403,927	1,157,830
2 MILES	5 MILES	10 MILES





A DIVISION OF  
LEE &  
ASSOCIATES





A DIVISION OF  
**LEE & ASSOCIATES**



**SPENCER HORAK**  
CO-PRESIDENT

310.899.2728 | [shorak@leewesta.com](mailto:shorak@leewesta.com)  
BRK DRE 01921906



**ANDREW DOAN**  
SENIOR ASSOCIATE

310.899.2736 | [adoan@leewesta.com](mailto:adoan@leewesta.com)  
AGT DRE 02070848

1508 17TH ST, SANTA MONICA CA 90404 | [LEEWESTLA.COM](http://LEEWESTLA.COM) | 310.899.2700 | DRE 01222000

No warranty or representation is made to the accuracy of the foregoing information. Terms of sales or lease are subject to change or withdrawal without notice.