



1728 OLYMPIC BOULEVARD

SANTA MONICA, CA 90404

±5,000 RSF
Free Standing Building
For Lease

1728 Olympic is a free standing class A creative office building located in the heart of Santa Monica on Olympic Blvd between 20th St and 17th Street. This property has high end creative finishes including exposed high height ceilings, polished concrete floors, kitchen, operable windows, glass roll up doors, and numerous skylights throughout.

PROPERTY SIZE

5,000 SF (Building)
3-5 + Years (Term)

OCCUPANCY

May 1, 2026

RENT

\$4.15/SF, NNN

PARKING

10 spaces
\$185/space/month

FEATURES

- Keyless Entry, Key Card Access
- Server Room
- Multiple Restrooms
- High-end Kitchen
- HVAC Throughout
- Skylights and Natural Light

LOCATION

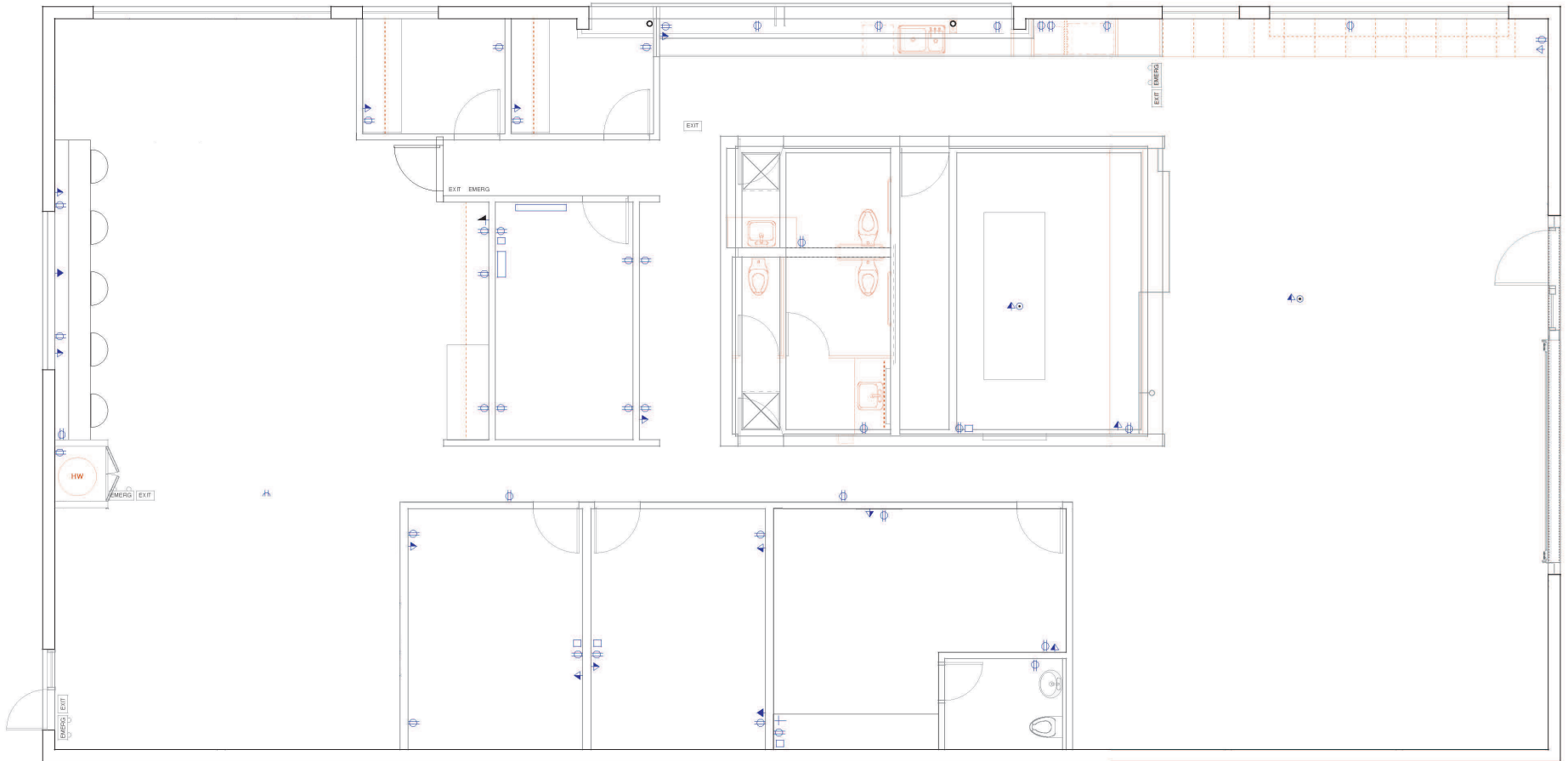
Surrounded by high-caliber tenants including Final Cut, Ntropic, Nextstation Music, Blackbear Pictures, Indian Paintbrush, David Kelly Productions, BMW Design Works, Jerry Bruckheimer, and more.

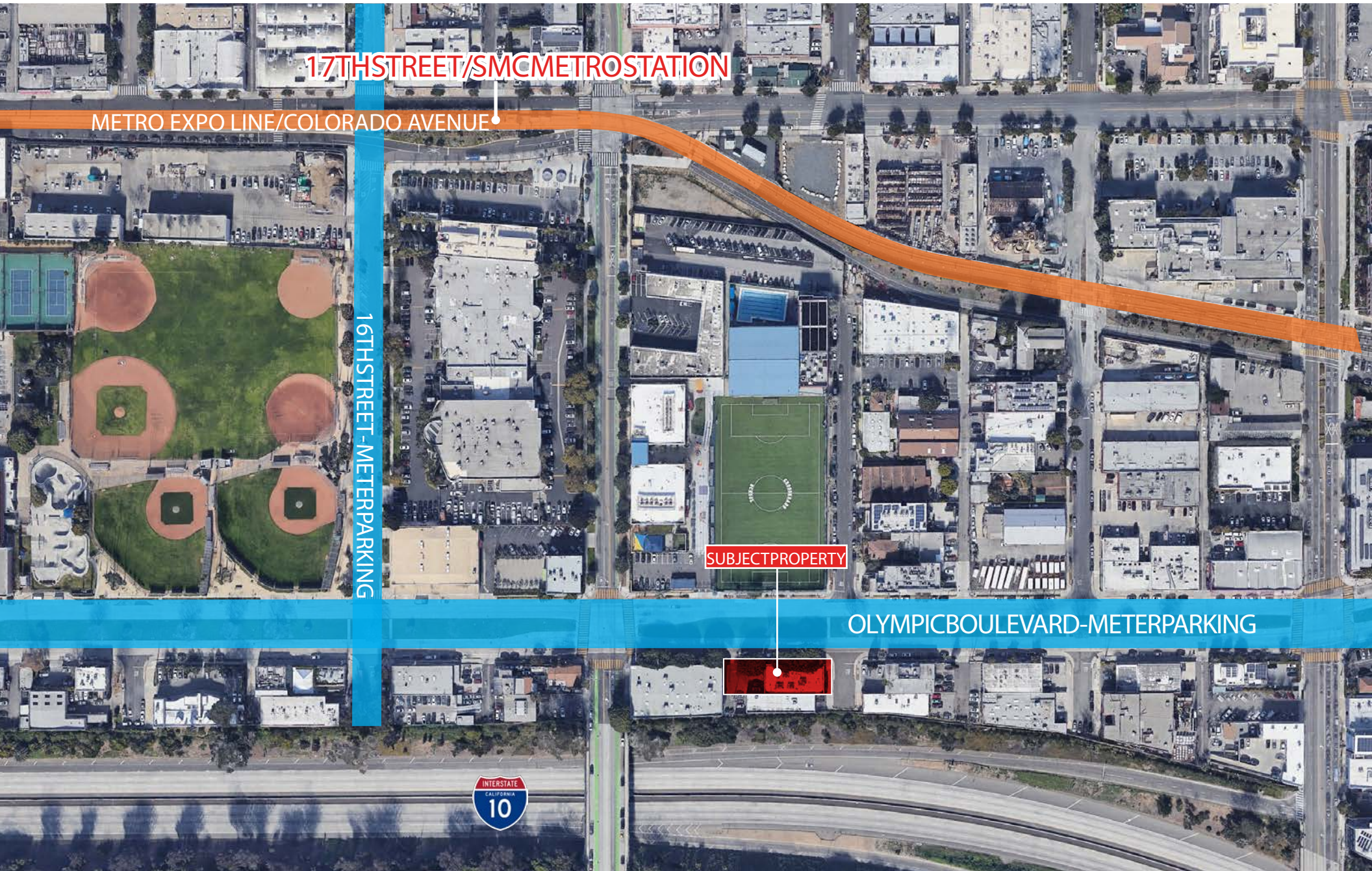
Located Just a few blocks from 17th St. Expo Line and close proximity to the 10 FWY / PCH

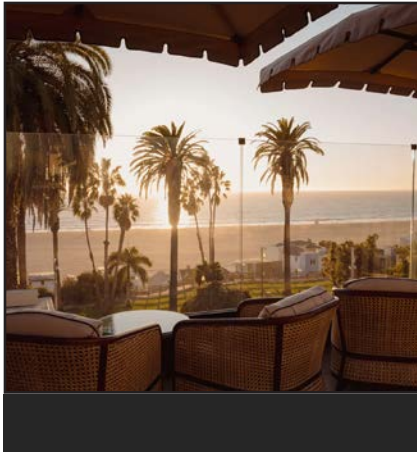




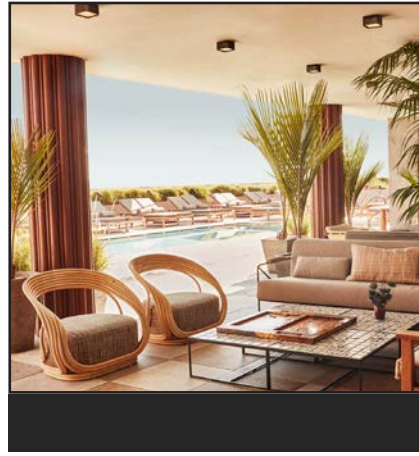




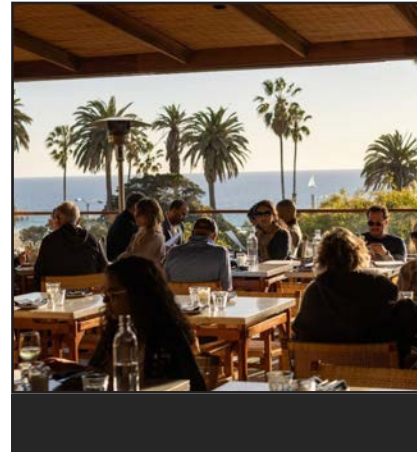




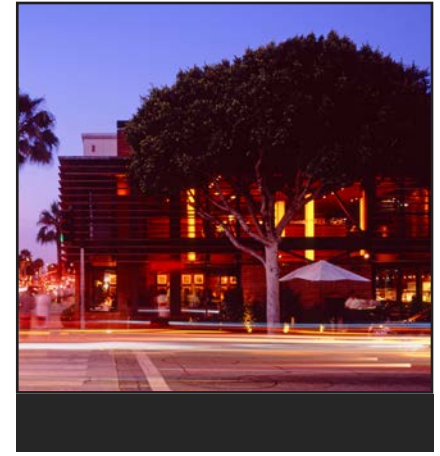
San Vicente Bungalows is an exclusive members club bringing together unique, like-minded individuals in an elegant, cozy setting with personalized, old-world service.



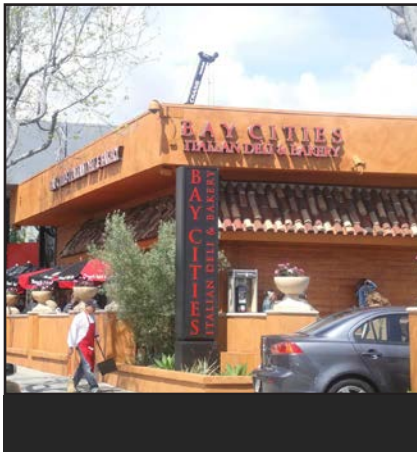
Santa Monica Proper is a coastal-inspired luxury hotel in the heart of the city, offering breezy rooms, a rooftop pool and restaurant, and wellness experiences just steps from the beach.



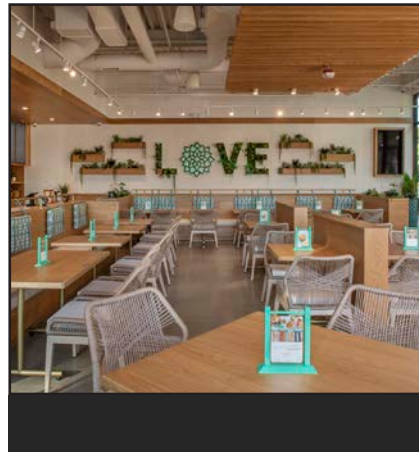
Éléphante brings the essence of southern Italy to life with coastal-inspired design and seasonal menus that transport guests to the shores of Pantelleria and the Aeolian Islands.



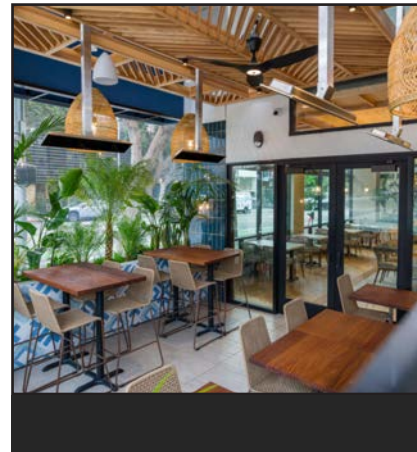
Hillstone offers Modern American cuisine and an elevated sushi selection served in a striking, contemporary space creating a vibrant and sophisticated dining experience.



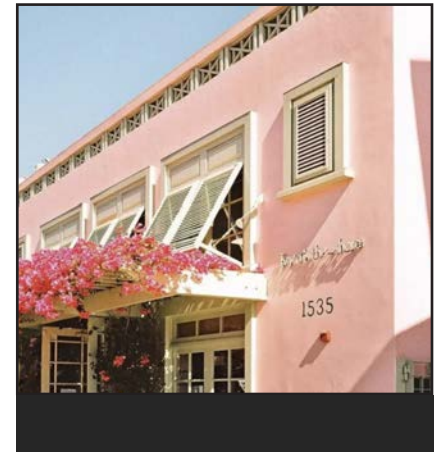
Bay Cities Deli is a beloved local institution, celebrated for its legendary, overstuffed sandwiches, authentic Italian deli fare, and curated selection of gourmet groceries.



Born in Venice, CA, **Tocaya** captures the essence of California with bold flavors, fresh ingredients, and a laid-back, soulful vibe that's more than just a restaurant—it's a way of life.



Pacific Catch is a contemporary restaurant that serves sustainably-sourced seafood inspired by Pacific Rim flavors, with a vibrant, ever-evolving menu, lively bar, dining room, and patio.



Ivy at The Shore in Santa Monica offers classic American and Italian dishes in a romantic atmosphere with flower adorned interiors and vibrant patio dining.



George Wilson

PRINCIPAL
gwilson@leewestla.com
310.899.2738
DRE: 02090678

David Wilson

PRINCIPAL
dwilson@leewestla.com
310.899.2707
DRE: 00822760

Lindsay Shuford

ASSOCIATE
lshuford@leewestla.com
310.899.2710
DRE: 02231518