

2331 4TH ST

SANTA MONICA, CA





BUILDING

± 2,388 SF

LAND

± 5,585 SF

SALE PRICE

\$2,750,000

ZONING

SMOP2

YEAR BUILT

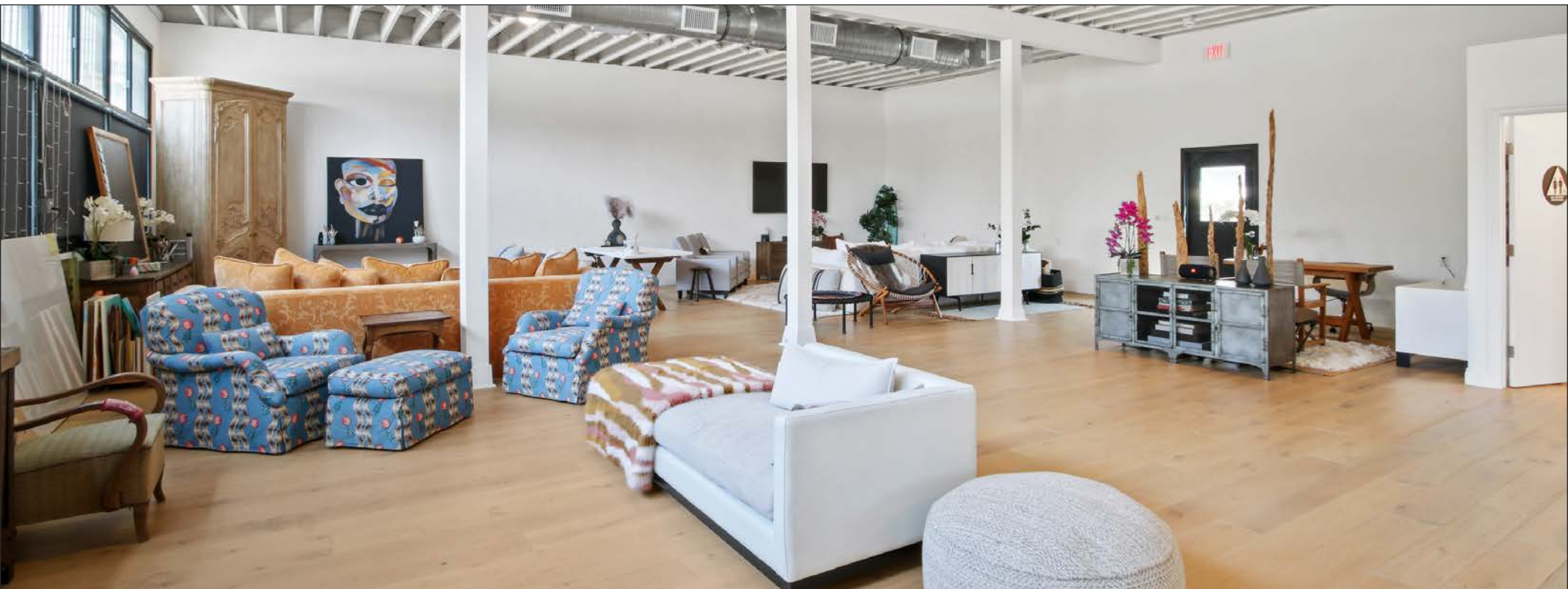
1925

OCCUPANCY

Vacant

FEATURES

- Highly Desirable Community
- Dense Retail Population
- Just south of the 10 Freeway, and just up from Main Street
- Close to Santa Monica airport, LAX, and plentiful public transportation stops
- New HVAC, roof, numerous interior and exterior recent improvements



AERIAL VIEW



NEARBY AMENITIES



CONTACTS

Douglas R Marshall, SIOR

310.899.2745
dmarshall@leewestla.com
AGT DRE 02075191

Ian Ameche, SIOR

310.899.2748
iameche@leewestla.com
AGT DRE 01976053

Alex Rivera

310.899.2742
arivera@leewestla.com
AGT DRE 01328712

Lee & Associates Los Angeles West, Inc.
1508 17th Street, Santa Monica, CA 90404
www.leewestla.com | DRE 01222000



A DIVISION OF



No warranty or representation is made to the accuracy of the foregoing information. Terms of sale or lease are subject to change or withdrawal without notice.