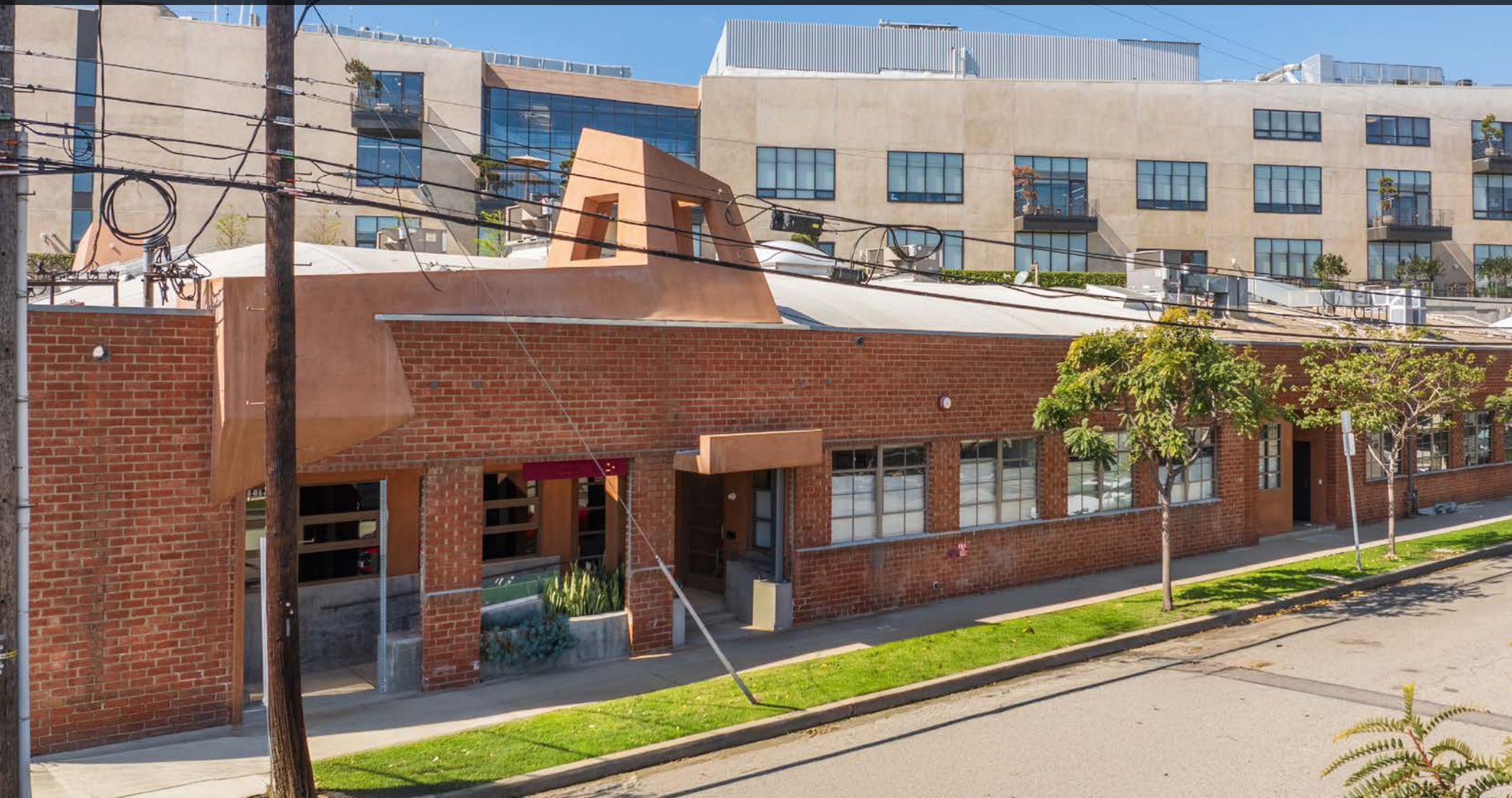


CREATIVE OFFICE FOR LEASE



2223 S. CARMELINA AVENUE
LOS ANGELES, CA 90064

SIZE 2223 S. Carmeline: ±5,416 SF

RATE \$4.30/SF/month Modified Gross

AVAILABILITY Immediate

PARKING 2/1000 @ \$175/car/month

FEATURES

- Newly built Creative.
- High Bow Truss Ceilings with skylights.
- Polished concrete floors.
- Good combination of open plan and private offices.
- Operable windows.
- Outdoor patio and deck.
- Great location with easy access to the 10 freeway at Bundy.
- Walking distance to Metro Line Bundy Station
- Ton of surrounding amenities.



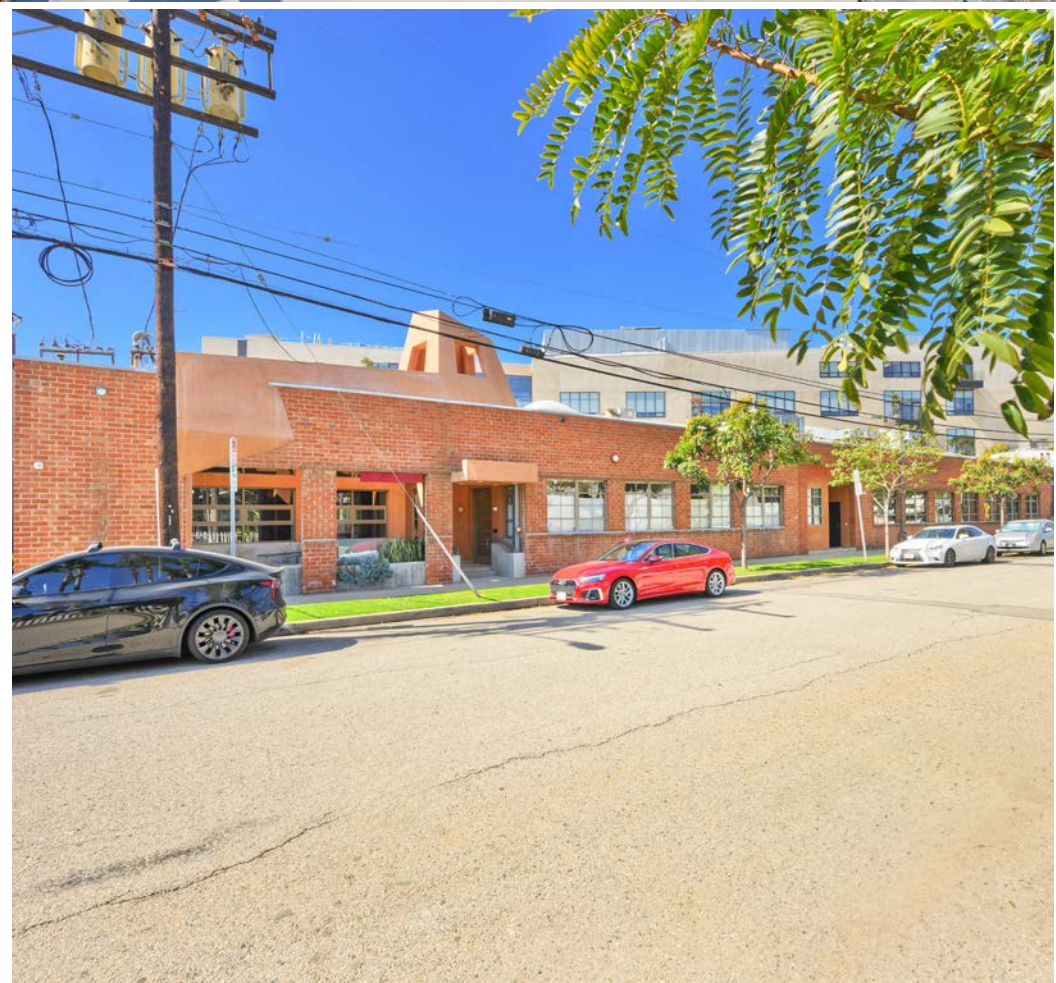
1508 17th Street, Santa Monica, CA
310.899.2700 | WWW.LEEWESTLA.COM | DRE 01222000

No warranty or representation is made to the accuracy of the foregoing information.
Terms of sale or lease are subject to change or withdrawal without notice.

2223 S. CARMELINA AVENUE
LOS ANGELES, CA 90064



A DIVISION OF
L LEE &
ASSOCIATES



A DIVISION OF
LEE & ASSOCIATES

FLOOR PLAN - 2223 S. Carmelina: 5,416 square feet



A DIVISION OF
LEE & ASSOCIATES

Tibor Lody, SIOR
 310.899.2720

tlody@leewestla.com atrifunovic@leewestla.com
 AGT DRE 01261129

Aleks Trifunovic, SIOR
 310.899.2721

BKR DRE 013631095

Keith Fielding
 310.899.2719

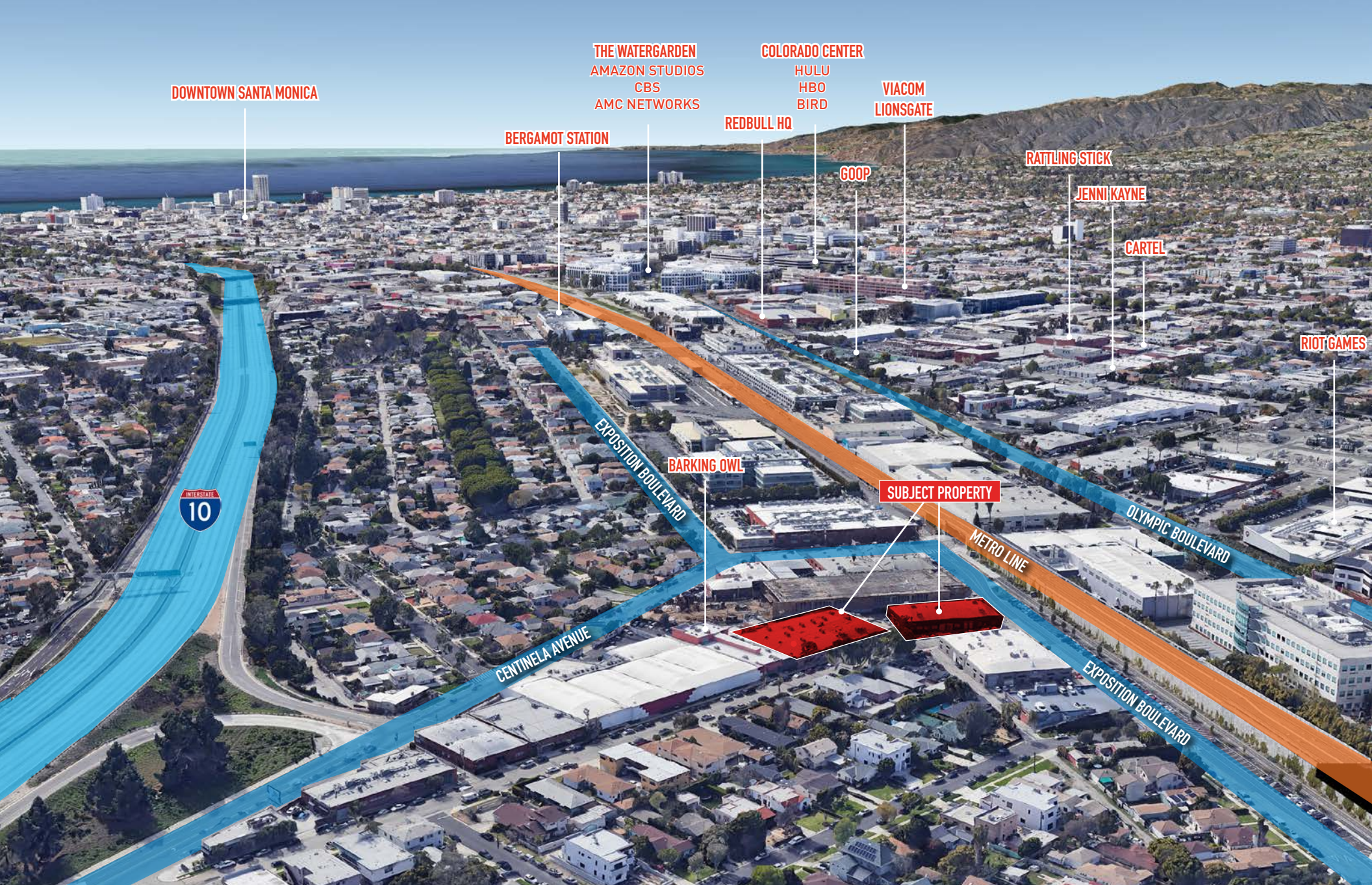
kfielding@leewestla.com
 AGT DRE 01729915

Tommy Isola
 310.899.2709

tisola@leewestla.com
 AGT DRE 01974024

Adam Levine
 310.899.2703

alevine@leewestla.com
 AGT DRE 02104830



DOWNTOWN SANTA MONICA

BERGAMOT STATION

THE WATERGARDEN
AMAZON STUDIOS
CBS
AMC NETWORKS

REDBULL HQ

COLORADO CENTER
HULU
HBO
BIRD

VIACOM
LIONSGATE

GOOP

RATTLING STICK

JENNI KAYNE

CARTEL

RIOT GAMES

BARKING OWL

SUBJECT PROPERTY



EXPOSITION BOULEVARD

CENTINELA AVENUE

METRO LINE

OLYMPIC BOULEVARD

EXPOSITION BOULEVARD



Tibor Lody, SIOR
310.899.2720

tlody@leewestla.com atrifunovic@leewestla.com
AGT DRE 01261129

Aleks Trifunovic, SIOR
310.899.2721

atrifunovic@leewestla.com
BKR DRE 013631095

Keith Fielding
310.899.2719

kfielding@leewestla.com
AGT DRE 01729915

Tommy Isola
310.899.2709

tisola@leewestla.com
AGT DRE 01974024

Adam Levine
310.899.2703

alevine@leewestla.com
AGT DRE 02104830