

5301 BEETHOVEN STREET

LOS ANGELES, CA 90066



A DIVISION OF



FOR LEASE



FEATURES

- Offices With Open Floor Plans
- Ample Parking
- Central Location
- Close Proximity to an Abundance of Shopping and Dining
- One Mile from the 405 Freeway
- Free 3/1000 Parking
- Term 3+ Years

PREMISES

Suite 134: ± 1,529 SF

Suite 255: ± 2,055 SF
(Furniture included)

Suite 265/295: ± 5,433 SF
(Suite 265: ± 3,784, Suite 295: ±1,649)
*can be leased together or separately

RENT

\$2.35/ SF, FSG

\$2.35/ SF, FSG

\$2.35/ SF, FSG

OCCUPANCY

Available Now

Available Now

Available Now

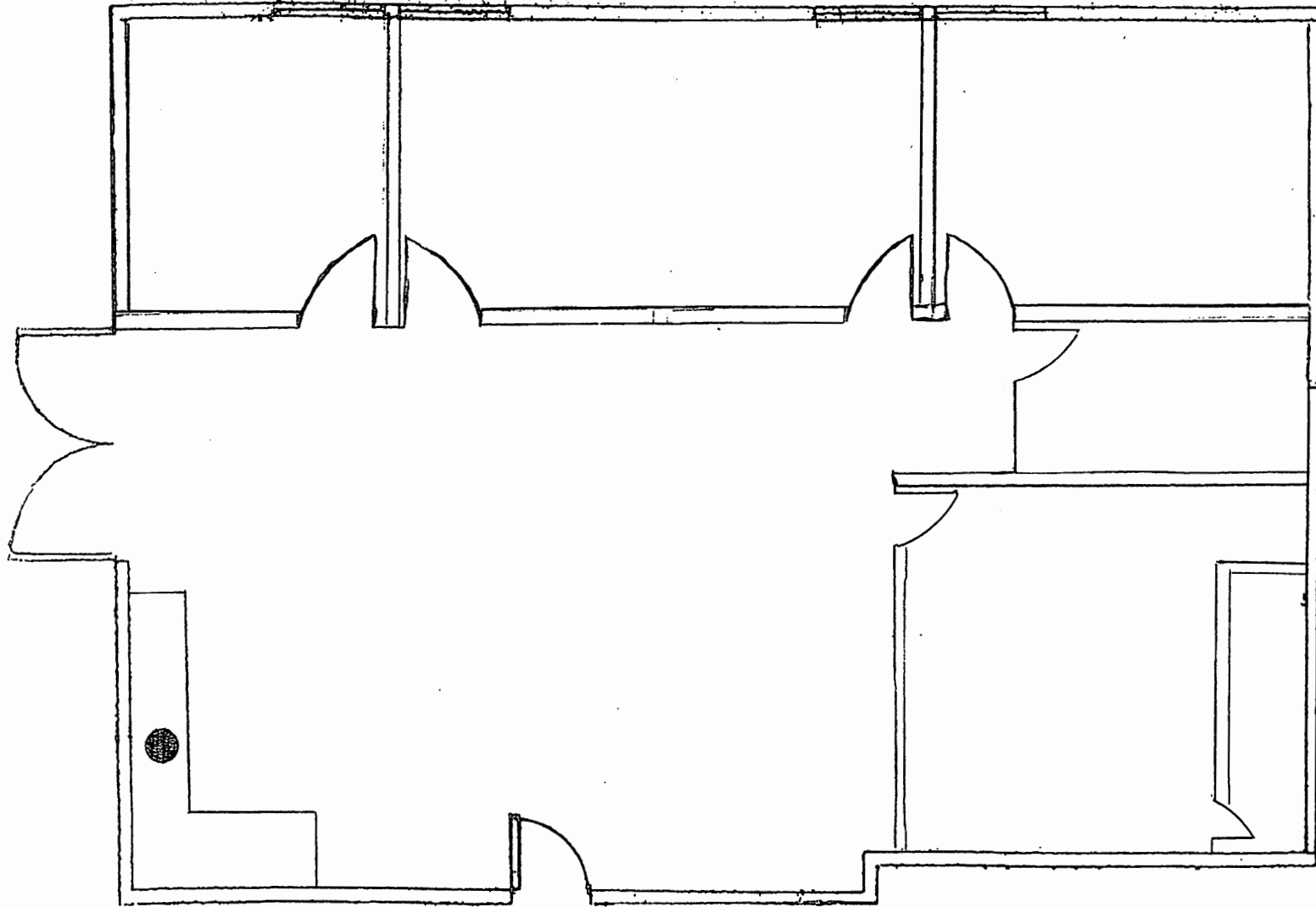






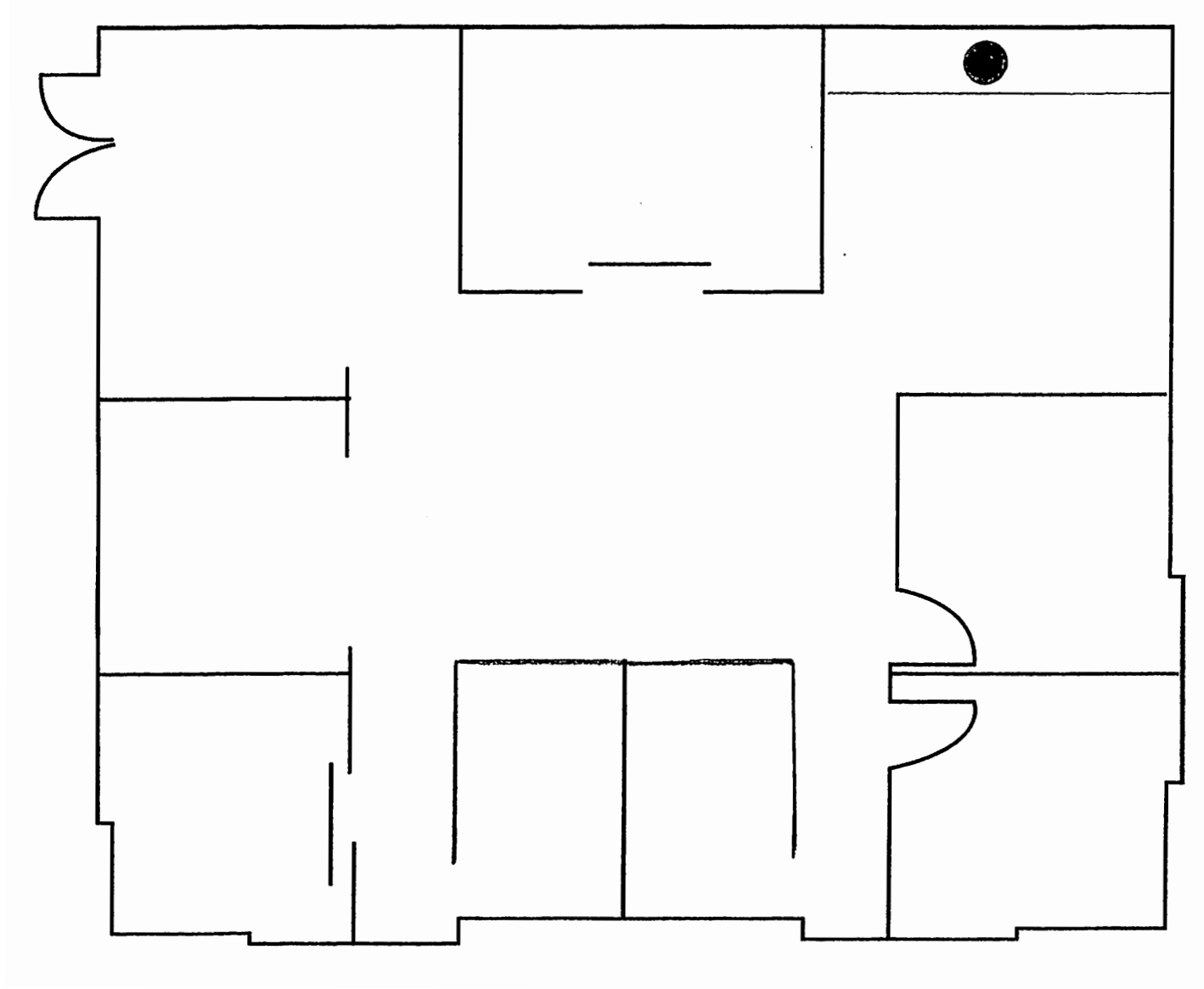
FLOOR PLAN

SUITE 134
± 1,529 SF



FLOOR PLAN

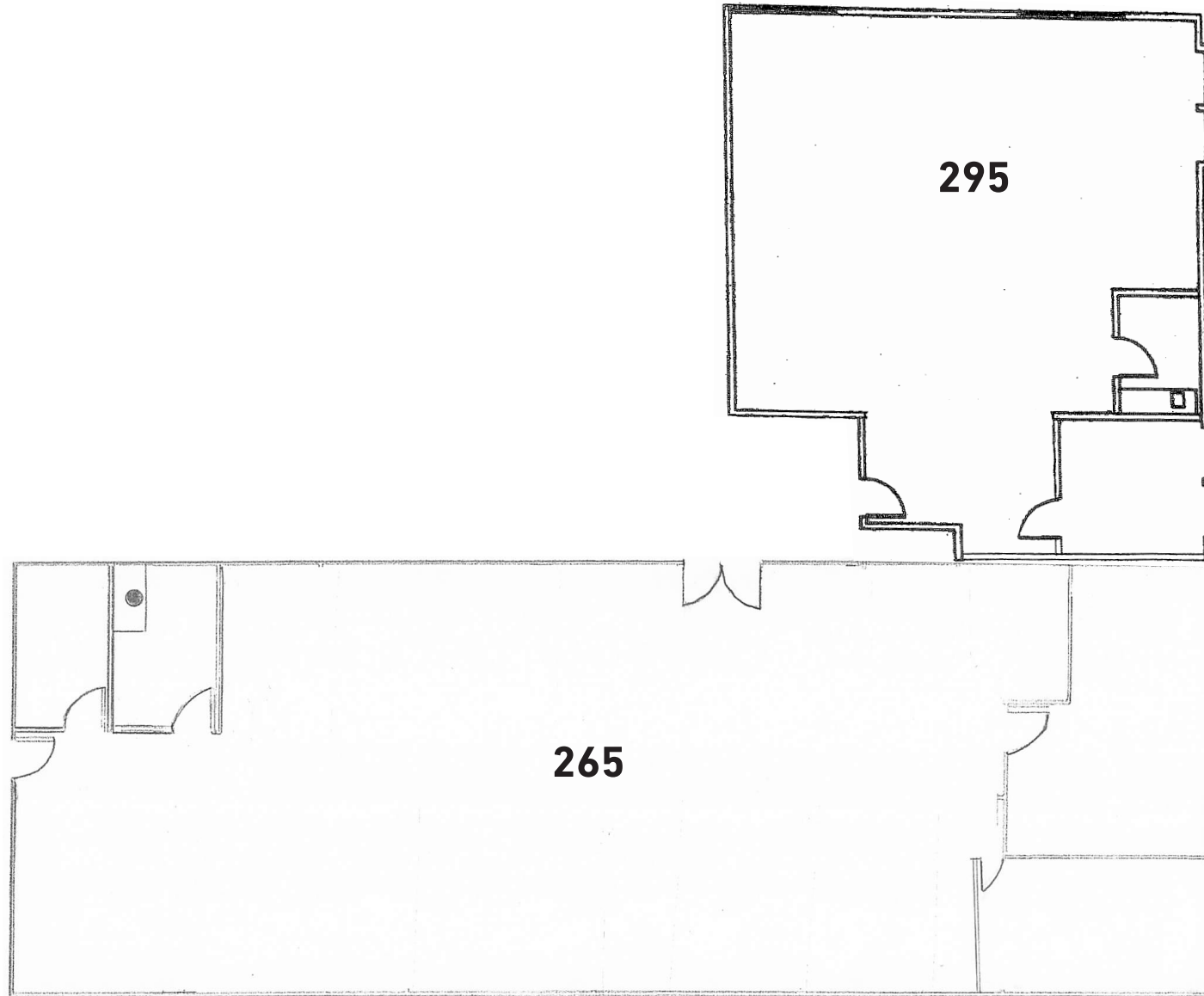
SUITE 255
± 2,055 SF



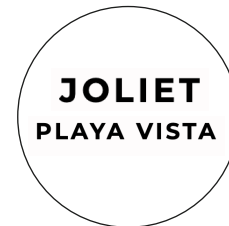
FLOOR PLAN

SUITE 265 & 295

*Suite 265 (3,784 SF) and Suite 295 (1,649 SF) can be leased together or separately.



AREA AMENITIES



NOTABLE TENANTS IN THE AREA



CONTACTS

DYLAN MAHOOD, CCIM

310.899.2706
dmahood@leewestla.com
AGT DRE 02027002

JAMES WILSON

310.899.2708
jwilson@leewestla.com
AGT DRE 00883324

CRISTINA GLASCOCK

602.738.0008
cglascock@leewestla.com
AGT DRE 02252335

Lee & Associates Los Angeles West, Inc.
1508 17th Street, Santa Monica, CA 90404
www.leewestla.com | DRE 01222000



A DIVISION OF



**LEE &
ASSOCIATES**