

8439 STELLER AVENUE

CULVER CITY, CA 90230



FOR LEASE



A DIVISION OF
LEE & ASSOCIATES

FLEX/CREATIVE BUILDING



PREMISES	± 38,284 SF
RENT	\$2.95/SF NNN (est. \$.20/SF)
AVAILABLE	Q2 2026
PARKING	52 Spaces (No Charge)

FEATURES

- New Fully Air Conditioned - 100 Tons
- New Bathrooms with Showers
- Concrete Floors, Skylights, 14'-24' Exposed Ceilings
- New Upgraded Electrical Service - 1600A 277/480V, 3PH-4W
- Windows on 3 Sides
- 5 Ground Level Loading Doors
- 5 Minutes from Downtown Culver City, Platform and Cumulus Project
- La Cienega and National Boulevard Metro Line Stations

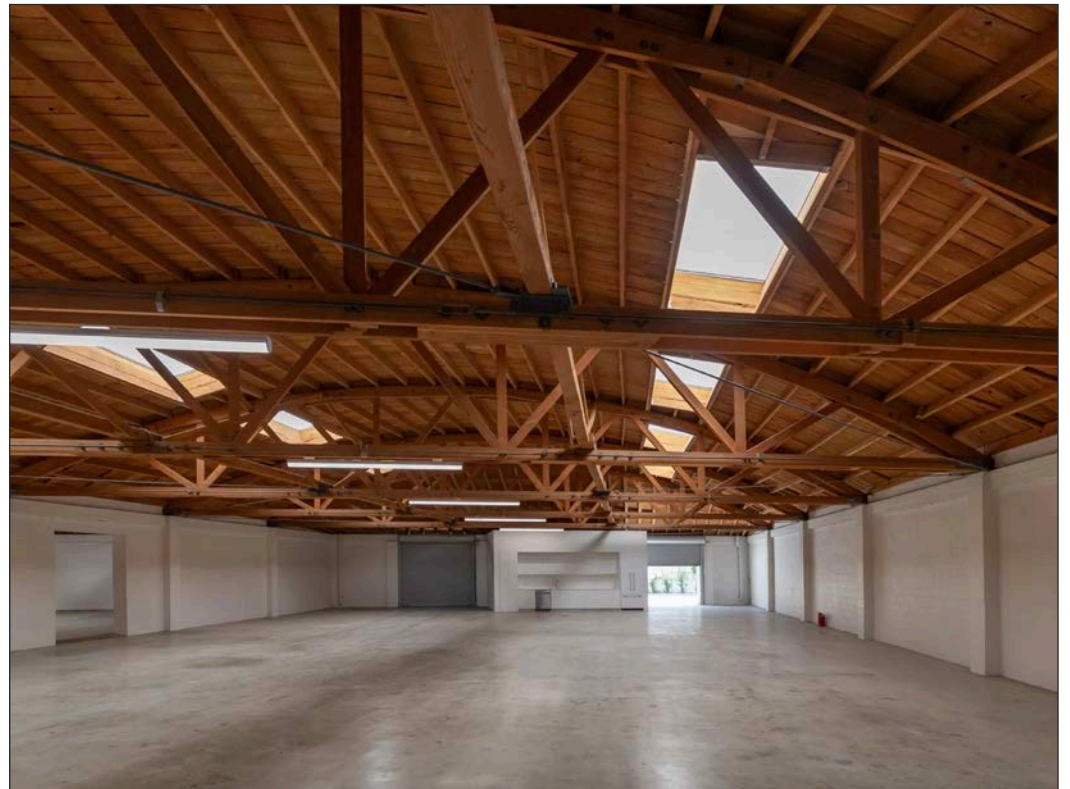
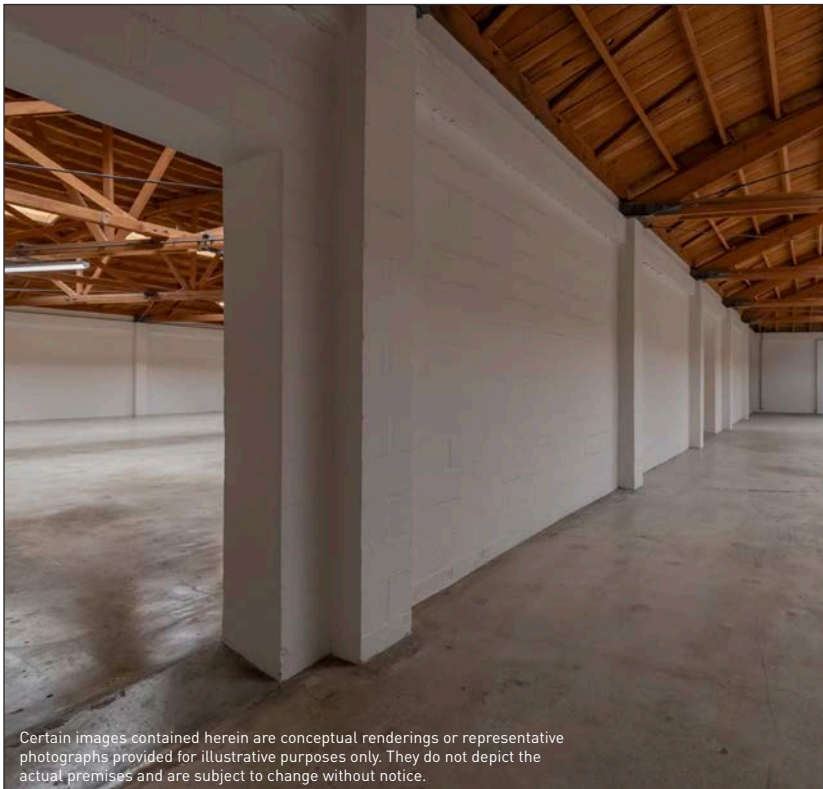
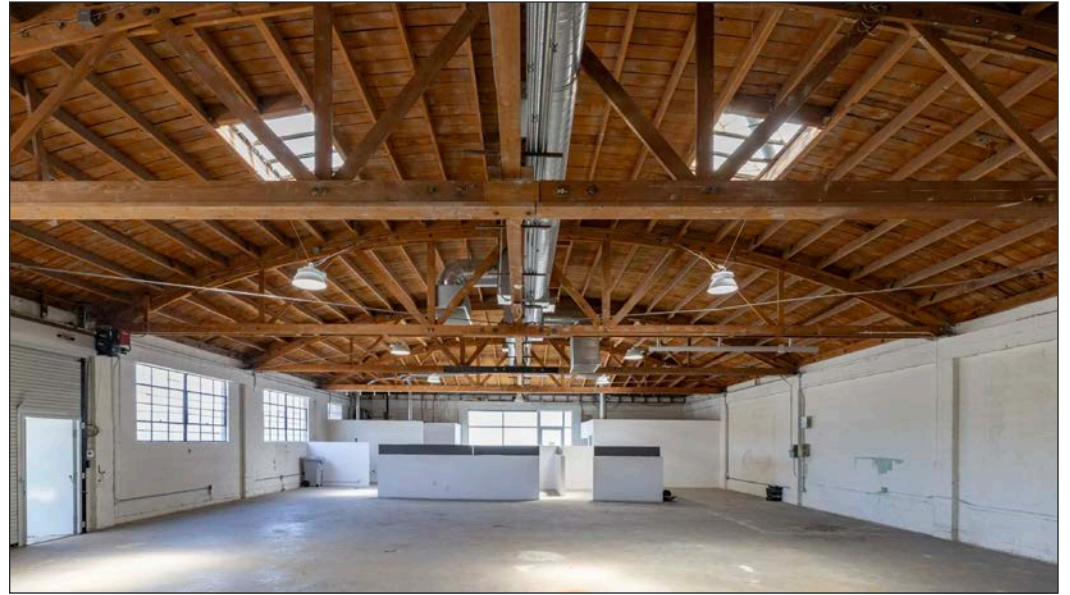
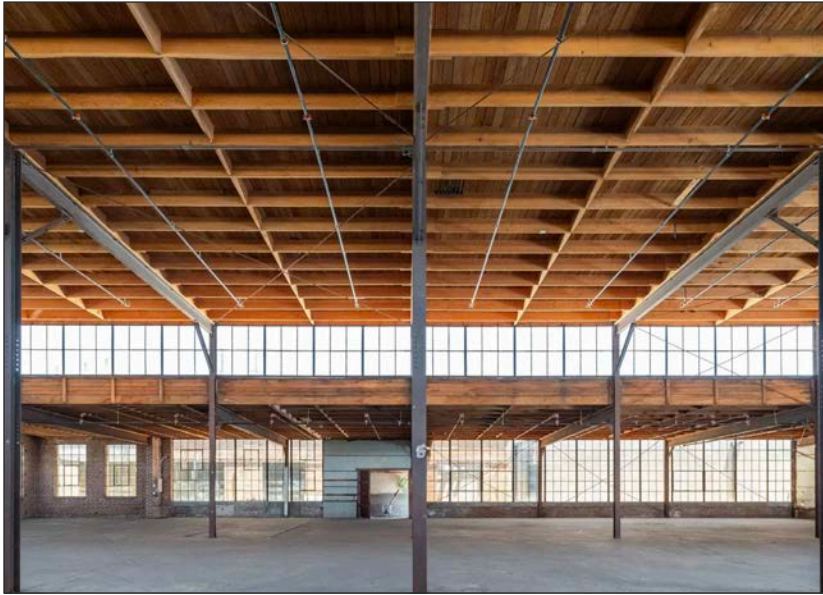


A DIVISION OF
LEE & ASSOCIATES

Lee & Associates Los Angeles West, Inc.
1508 17th Street, Santa Monica, CA 90404
www.leewestla.com | DRE 01222000

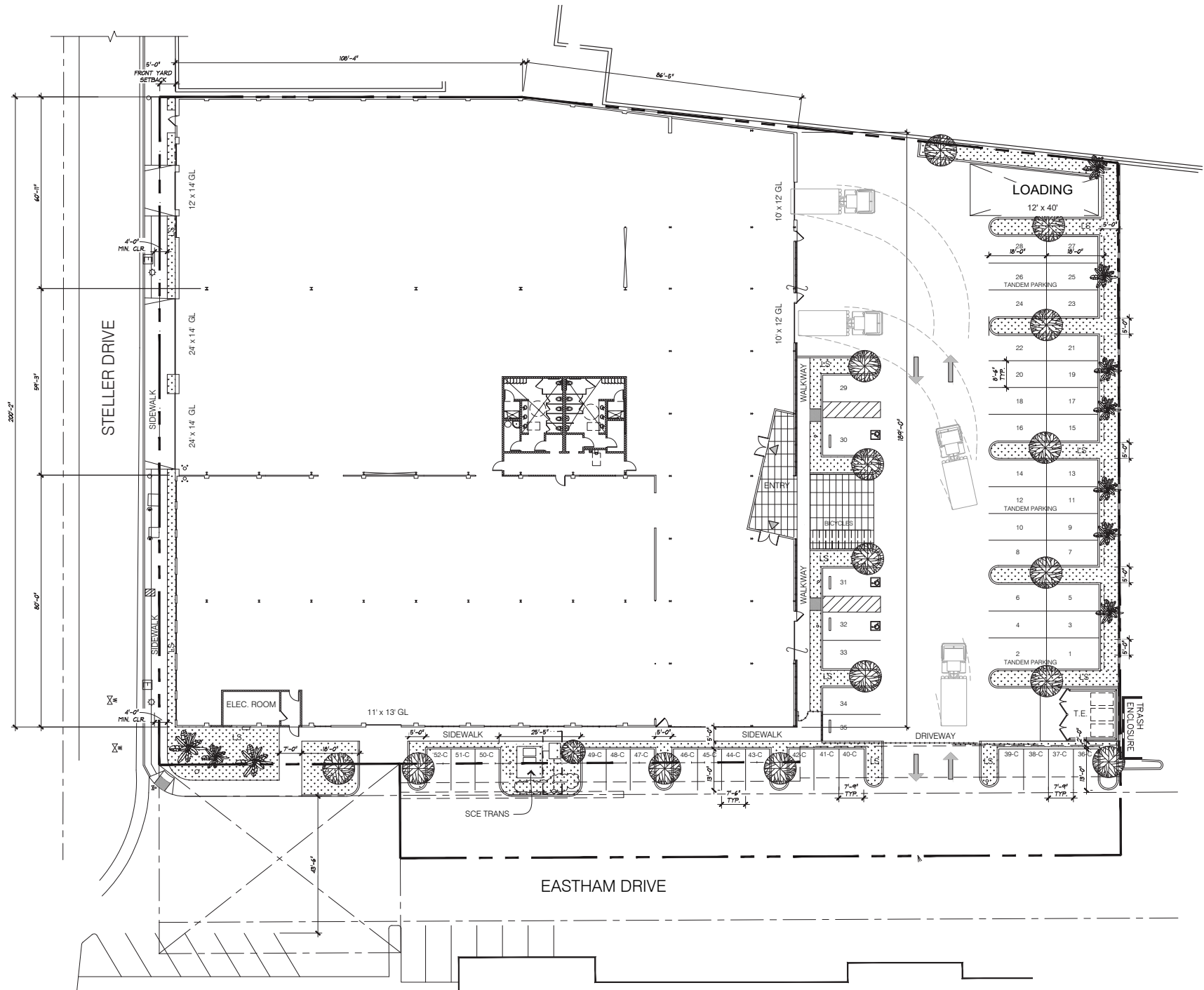
Certain images contained herein are conceptual renderings or representative photographs provided for illustrative purposes only. They do not depict the actual premises and are subject to change without notice.

Certain images contained herein are conceptual renderings or representative photographs provided for illustrative purposes only. They do not depict the actual premises and are subject to change without notice.

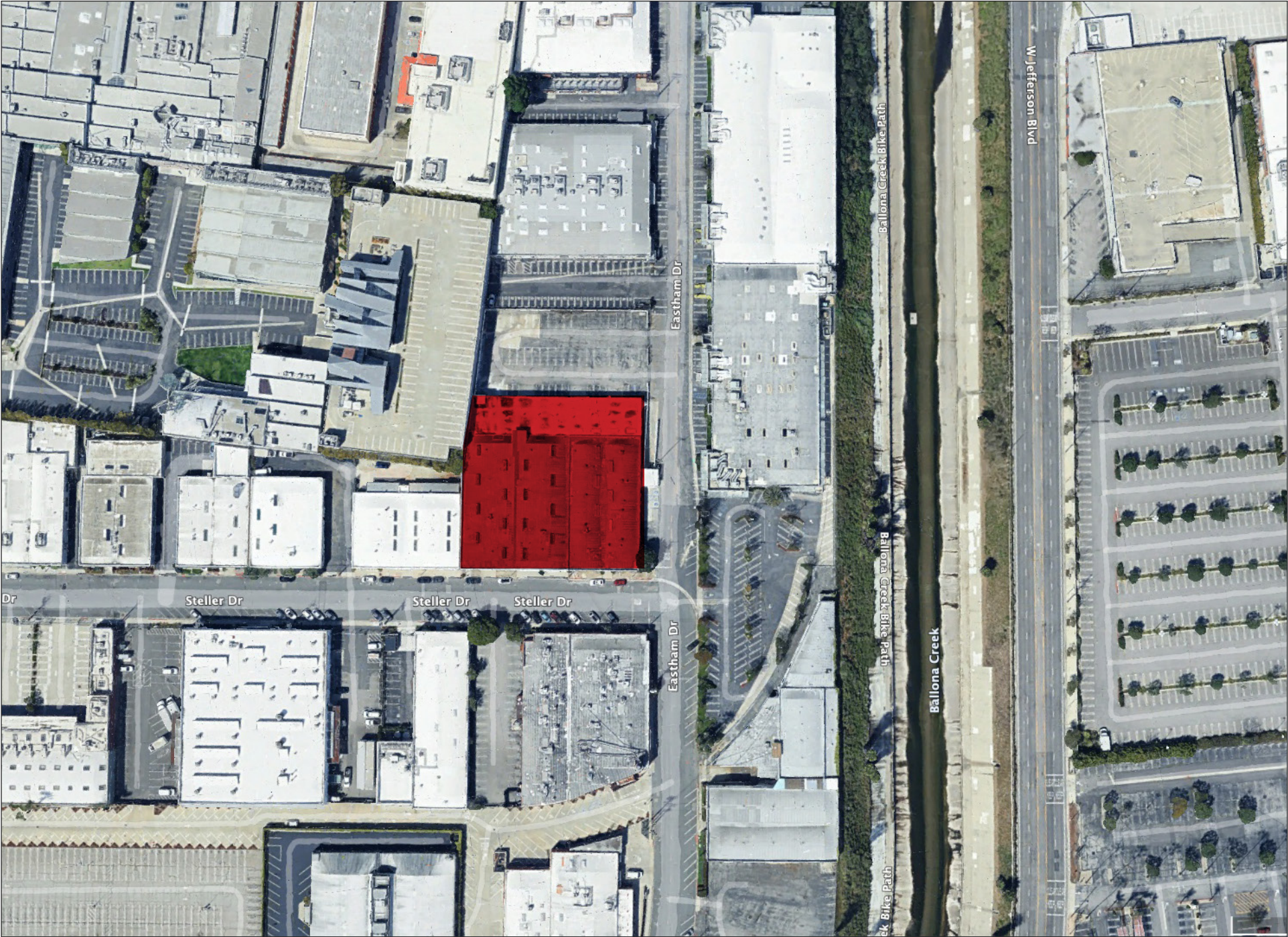


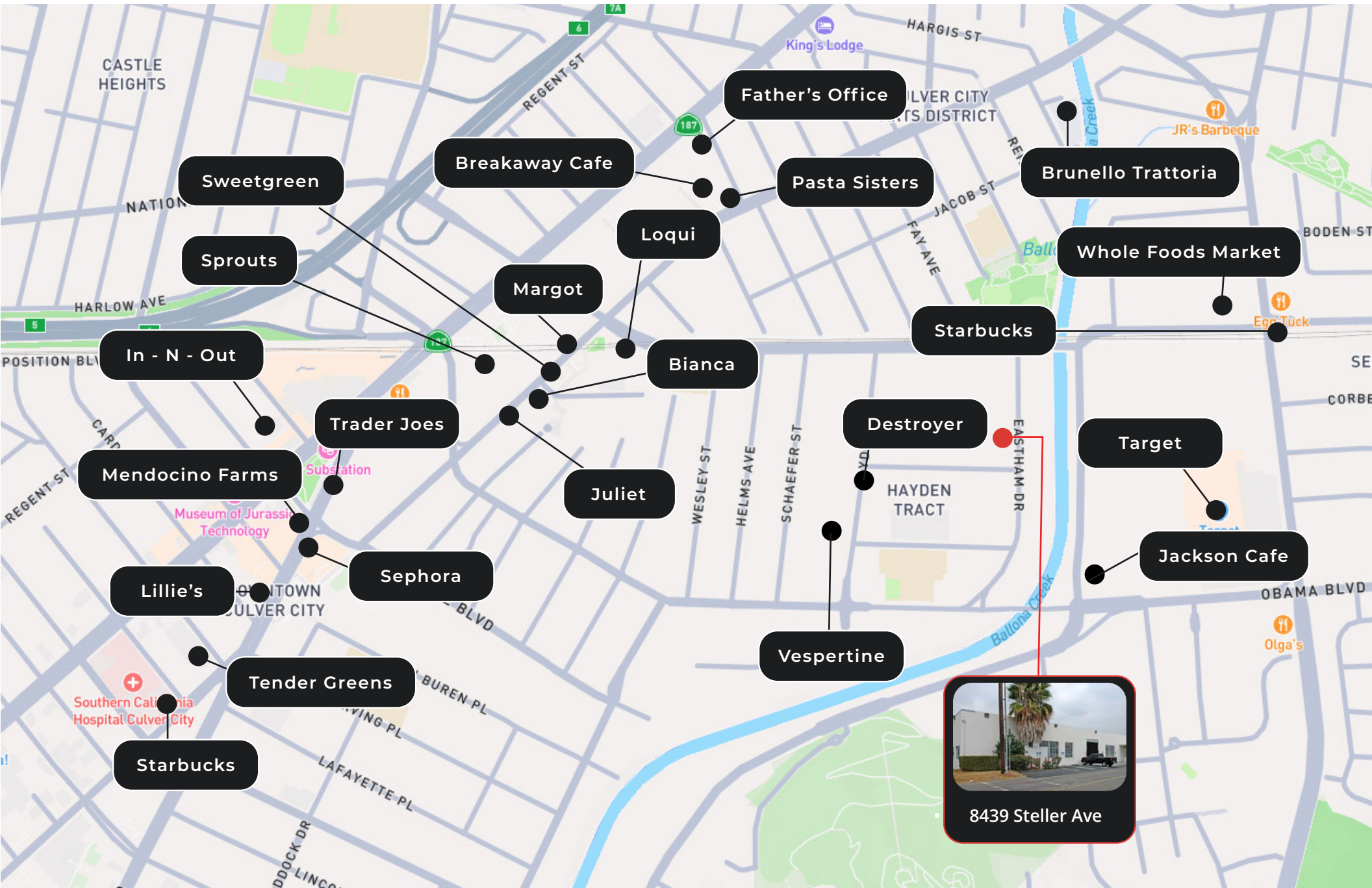
Certain images contained herein are conceptual renderings or representative photographs provided for illustrative purposes only. They do not depict the actual premises and are subject to change without notice.

Floor Plan



FOR LEASE





CONTACTS

Keith Fielding

Principal
310 899 2719
kfielding@leewestla.com
AGT DRE #01729915

Tommy Isola

Principal
310.899.2709
tisola@leewestla.com
AGT DRE 01974024

Tibor Lody, SIOR

Principal
310.899.2720
tlody@leewestla.com
AGT DRE 01261129

Adam Levine

Senior Associate
310.899.2703
alevine@leewestla.com
AGT DRE 02104830

Aleks Trifunovic, SIOR

Principal
310 899 2721
atrifunovic@leewestla.com
BKR DRE #01363109

Cristina Glascock

Associate
602.738.0008
cglascock@leewestla.com
AGT DRE 02252335



Lee & Associates Los Angeles West, Inc.
1508 17th Street, Santa Monica, CA 90404
www.leewestla.com | DRE 01222000

No warranty or representation is made to the accuracy of the foregoing information. Terms of sale or lease are subject to change or withdrawal without notice.
Certain images contained herein are conceptual renderings or representative photographs provided for illustrative purposes only. They do not depict the actual premises and are subject to change without notice.