

1545

26th STREET
SANTA MONICA

VIEW VIRTUAL TOUR



www.leewestla.com | dre 01222000

**FREESTANDING CREATIVE OFFICE
FOR LEASE IN SANTA MONICA**

PREMISES	Unit 300: ±6,007
RENT	\$2.95 SF NNN
OCCUPANCY	Immediate
TERM	1-3 Years
PARKING	44 Parking Spaces - \$175/space/month Additional Parking Lots Nearby
FEATURES	<ul style="list-style-type: none">- Brand New Renovations Complete in 2020- 7, 000 SF of Bonus Outdoor Patio and Work Space- Touchless Plumbing and Lighting Fixtures- Balance of Open Floor Plan with High Ceilings and Private Windowed Offices- Private, Gated Parking Garage- Solar Panels Creating Maximum Efficiency- Located in the Heart of the Santa Monica Media District- Short Walk to Bergamot Station and Multiple Amenities

Welcome to 1545 26th St, a beautiful freestanding creative office building comprised of approximately 16,069 SF. This multi-level building consists of a ground floor secure parking garage beneath two floors of contemporary creative office space. The second and third levels are uniquely surrounded by outdoor terraces that wrap completely around the building exterior, creating a rare opportunity for open-air collaboration, breakout, and social event space. The patio also features three steel structures with adjustable canopies, creating a shaded area that leads directly into the space through the brand new large accordion doors. This is a true indoor/outdoor workspace and an excellent opportunity to take advantage of Santa Monica's beautiful weather. The area is home to several renowned media groups and sits within walking distance of numerous restaurants and amenities, as well as Bergamot Station.

CONTACT	Primary Broker	
	Aleks Trifunovic, SIOR 310.899.2721 atrifunovic@leewestla.com BKR DRE 01363109	Tommy Isola 310-922-0607 tisola@leewestla.com AGT DRE 01974024

Adam Levine
310.899.2703
alevine@leewestla.com
AGT DRE 02104830

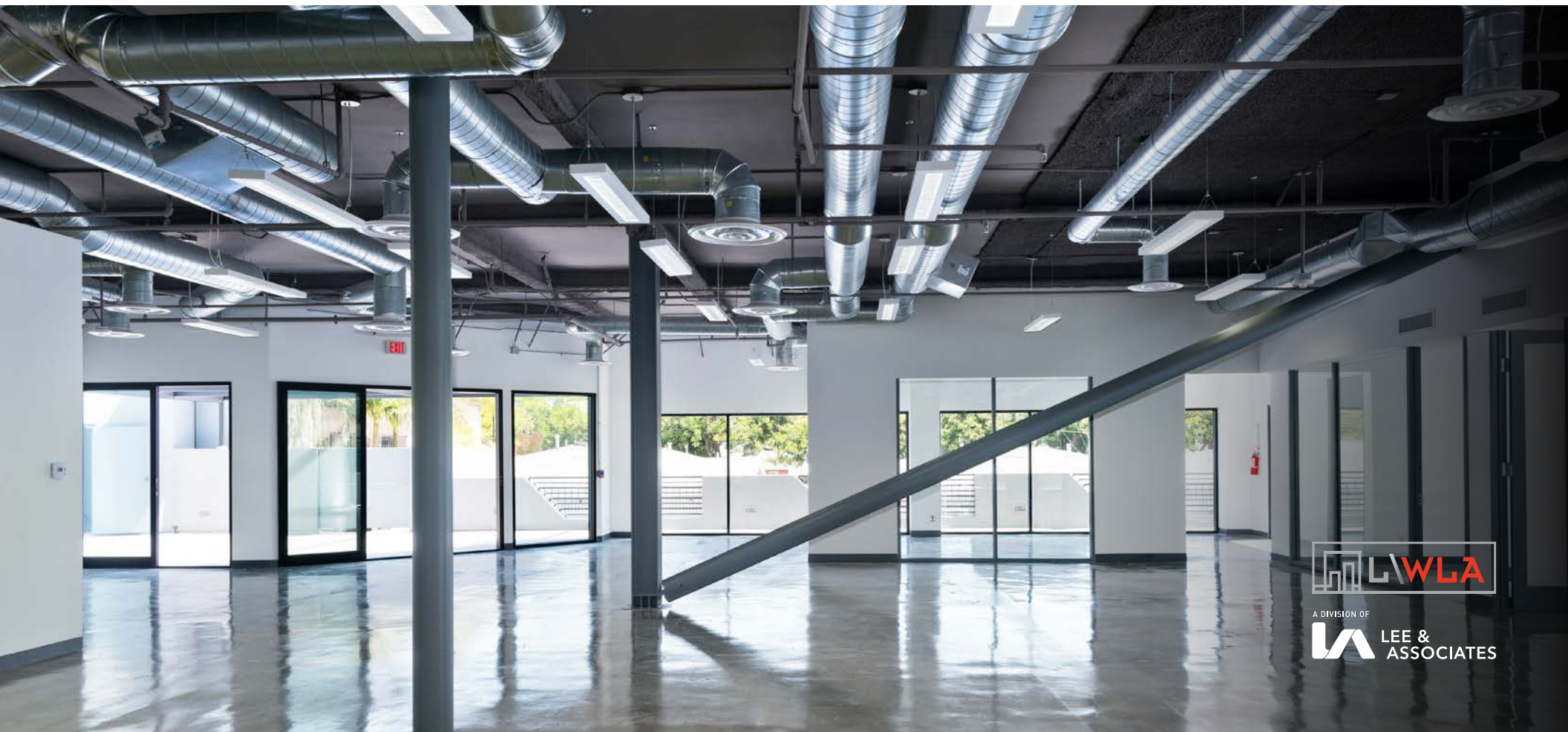
No warranty or representation is made to the accuracy of the foregoing information.
Terms of sale or lease are subject to change or withdrawal without notice.



1508 17th Street, Santa Monica, CA 90404
310.899.2700 | www.leewestla.com | dre 01222000

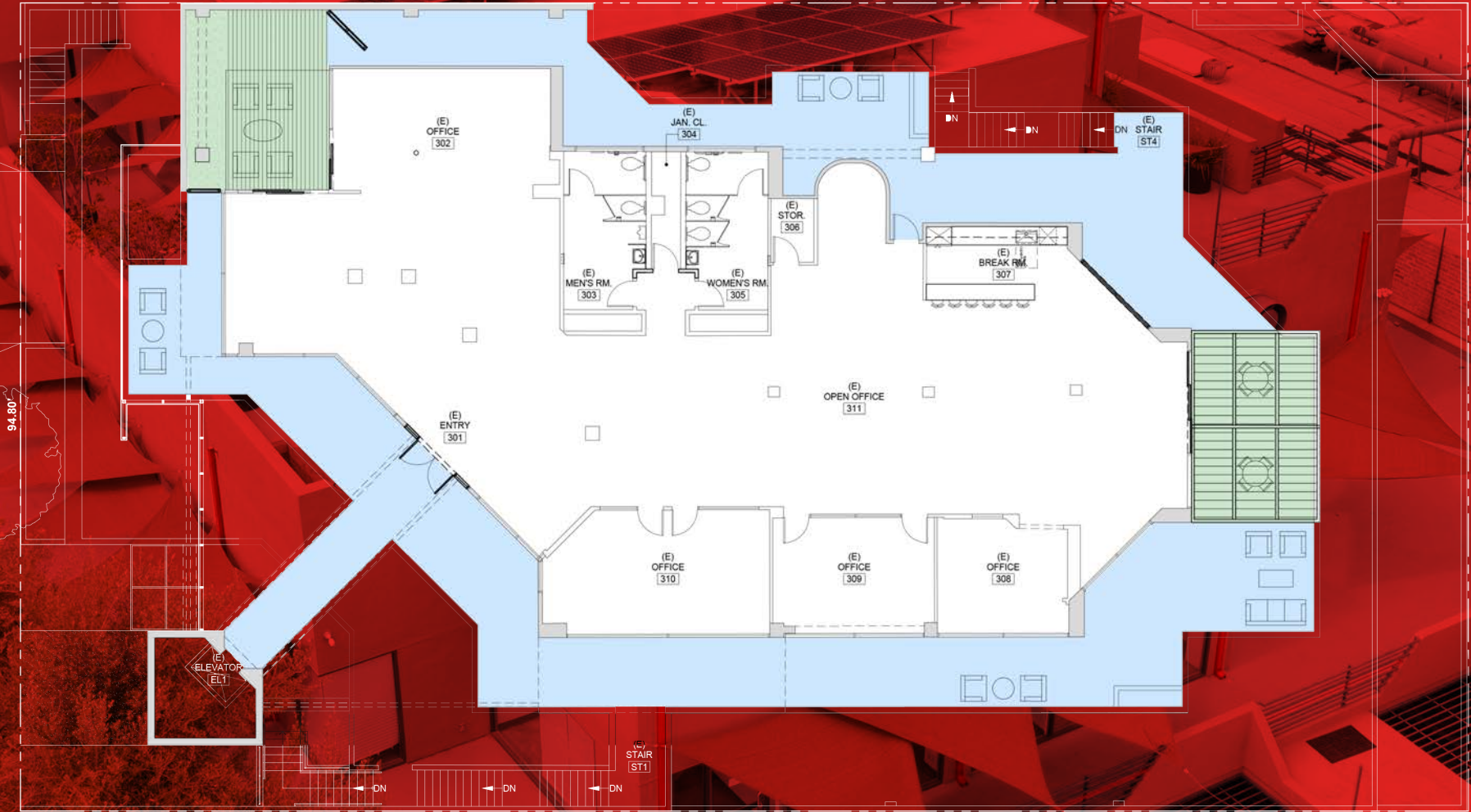
1545 26TH STREET
SANTA MONICA, CA 90404





THIRD FLOOR ± 6,007 SF

26TH STREET



Aleks Trifunovic, SIOR
310.899.2721
atrifunovic@leewestla.com
BKR DRE 01363109

Tibor Lody, SIOR
310.899.2720
tlody@leewestla.com
AGT DRE 01261129

Keith Fielding
310.899.2719
kfielding@leewestla.com
AGT DRE 01729915

Tommy Isola
310-922-0607
tisola@leewestla.com
AGT DRE 01974024

Adam Levine
310.899.2703
alevine@leewestla.com
AGT DRE 02104830

INTERIOR STAIRCASE RENDERING



A DIVISION OF
LEE & ASSOCIATES

Aleks Trifunovic, SIOR

310.899.2721

atrifunovic@leewestla.com

BKR DRE 01363109

Tibor Lody, SIOR

310.899.2720

tlody@leewestla.com

AGT DRE 01261129

Keith Fielding

310.899.2719

kfielding@leewestla.com

AGT DRE 01729915

Tommy Isola

310-922-0607

tisola@leewestla.com

AGT DRE 01974024

Adam Levine

310.899.2703

alevine@leewestla.com

AGT DRE 02104830

EXTERIOR RENOVATION

Aleks Trifunovic, SIOR
310.899.2721
atrifunovic@leewestla.com
BKR DRE 01363109

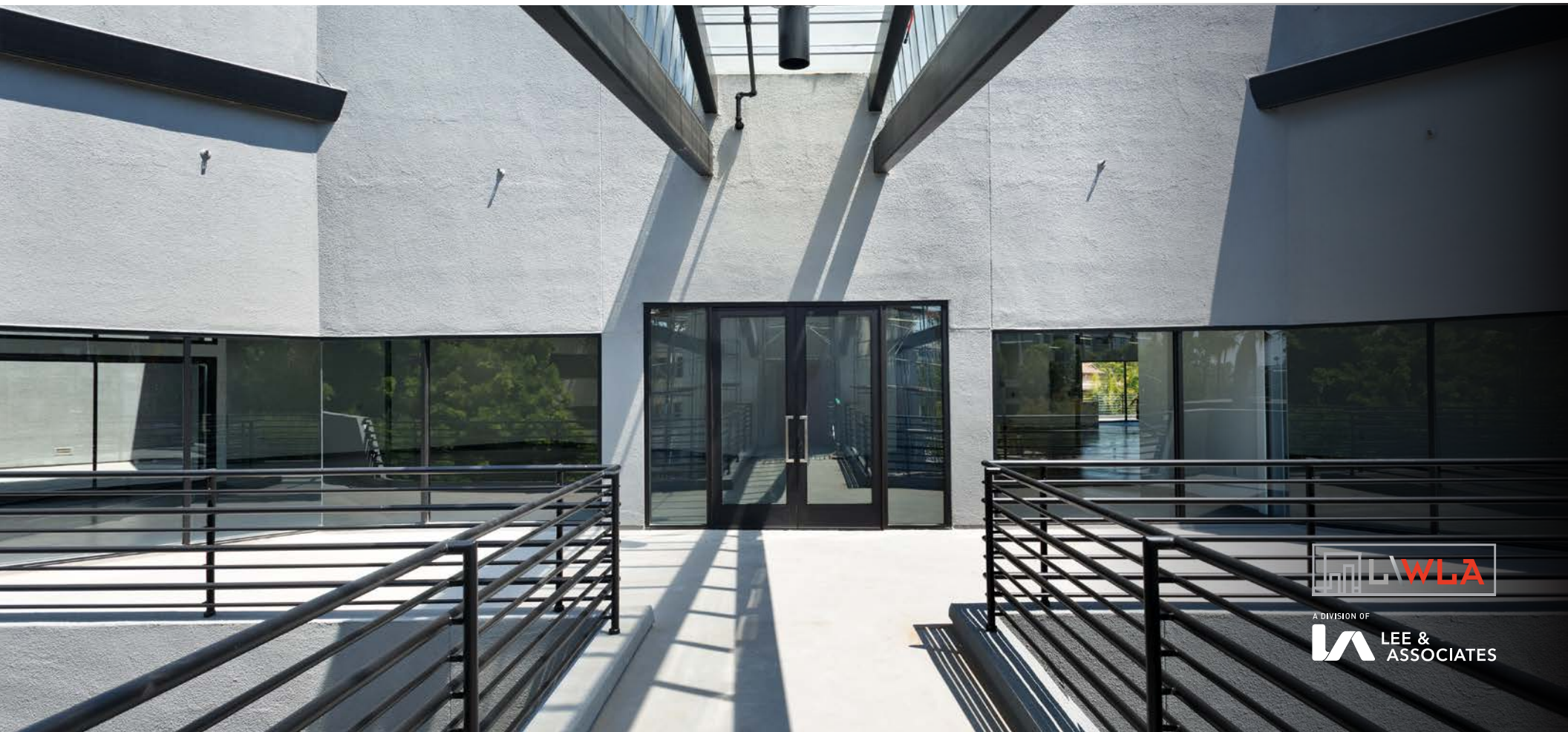
Tibor Lody, SIOR
310.899.2720
tlody@leewestla.com
AGT DRE 01261129

Keith Fielding
310.899.2719
kfielding@leewestla.com
AGT DRE 01729915

Tommy Isola
310-922-0607
tisola@leewestla.com
AGT DRE 01974024

Adam Levine
310.899.2703
alevine@leewestla.com
AGT DRE 02104830

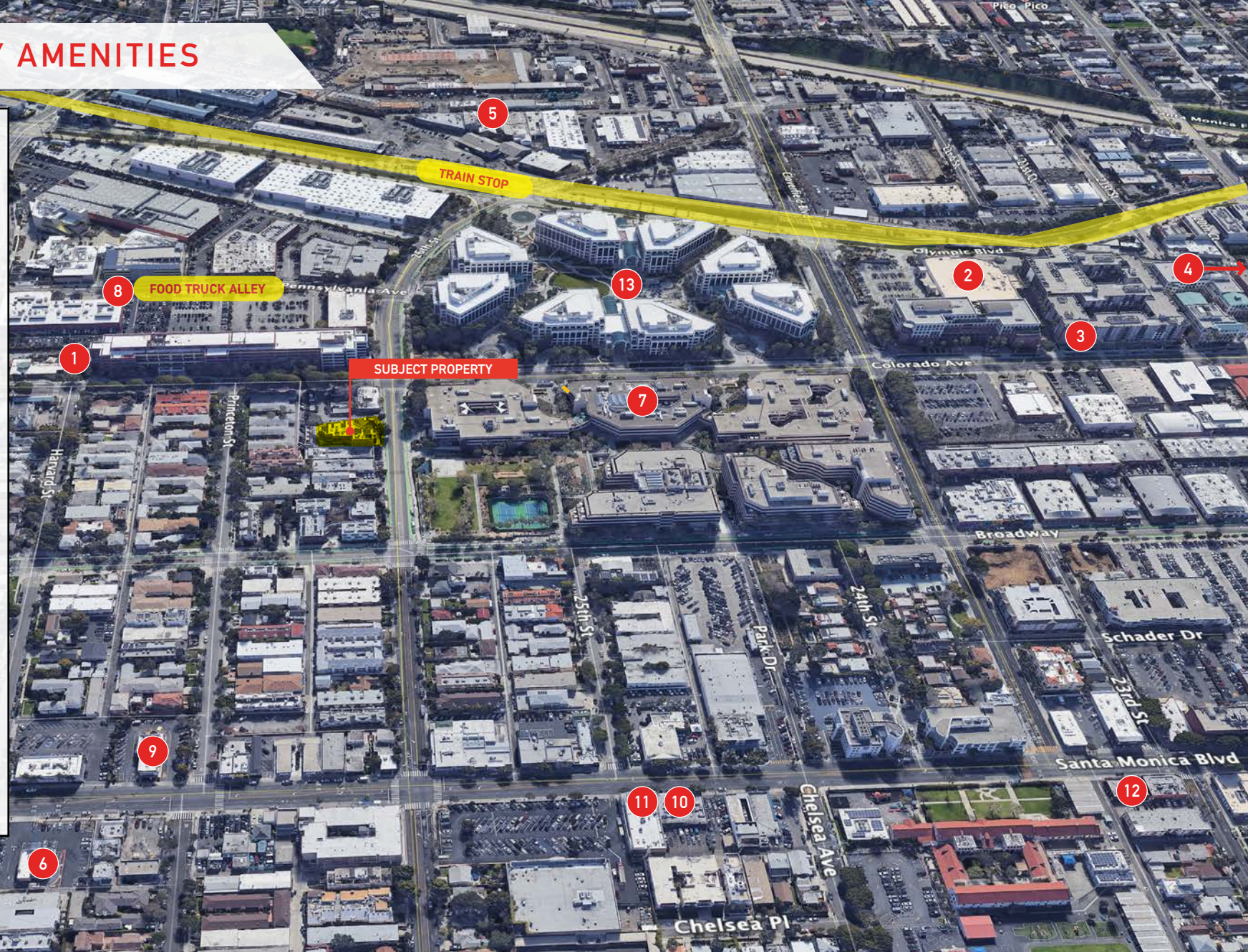




A DIVISION OF
LEE & ASSOCIATES

NEARBY AMENITIES

1. TIATO KITCHEN & MARKET
2. RALPHS
3. AO SANTA MONICA APARMENTS
 - *STARBUCKS
 - *WHATSUB
 - *RENOVO
 - *SALT & TART
4. SANTA MONICA BREW WORKS
5. BIRDIE G'S
6. CARL'S JR
7. COLORADO CENTER
 - * DAILY GRILL
 - *COLORADO KITCHEN
 - * ELABREW
8. FOOD TRUCK ALLEY
9. MCDONALD'S
10. VITO'S PIZZA
11. SAN SAI JAPANESE GRILL
12. THAI VEGAN II
13. WATER GARDEN
 - *CITY KITCHEN EXPRESS
 - *SMOKEHOUSE BBQ
 - * IL FORNO TO-GO
 - * TRIMANA
 - * MRS. WINSTONS



<p>Aleks Trifunovic, SIOR 310.899.2721 atrifunovic@leewestla.com BKR DRE 01363109</p>	<p>Tibor Lody, SIOR 310.899.2720 tlody@leewestla.com AGT DRE 01261129</p>	<p>Keith Fielding 310.899.2719 kfielding@leewestla.com AGT DRE 01729915</p>	<p>Tommy Isola 310-922-0607 tisola@leewestla.com AGT DRE 01974024</p>	<p>Adam Levine 310.899.2703 alevine@leewestla.com AGT DRE 02104830</p>
--	--	--	--	---

SURROUNDING TENANTS



Aleks Trifunovic, SIOR
310.899.2721
atrifunovic@leewestla.com
BKR DRE 01363109

Tibor Lody, SIOR
310.899.2720
tlody@leewestla.com
AGT DRE 01261129

Keith Fielding
310.899.2719
kfielding@leewestla.com
AGT DRE 01729915

Tommy Isola
310-922-0607
tisola@leewestla.com
AGT DRE 01974024

Adam Levine
310.899.2703
alevine@leewestla.com
AGT DRE 02104830