



1751 BERKELEY ST

SANTA MONICA, CA 90404

Creative Studios For Lease

Full Building or Divisible to 3 Individual Suites

Full Building: ±11,100 SF | Suite 1: ±3,439 SF | Suite 2: ±3,839 SF | Suite 3: ±3,822 SF

FULL BUILDING OR DIVISIBLE TO THREE SUITES



PREMISES

± 11,100 RSF

(Can be divisible to 3 suites)

STUDIOS

Suite 1: ± 3,439 SF

Suite 2: ± 3,839 SF

Suite 3: 3,822 SF

OCCUPANCY

January, 2027

FEATURES

- Private patios
- Exposed double bow truss ceiling
- Operable torrance steel windows
- Skylights
- Polished concrete floors
- Near bergomont and bundy expo stations
- Easy access to Santa Monica 10 Freeway and Pacific Coast Highway

LOCATION

Located in the heart of the Santa Monica Media District, surrounded by high-caliber tenants: Cartel, Jenni Kayne, Apogee Music, Beatycounter, Colorfront and more.

RENT

Contact Broker

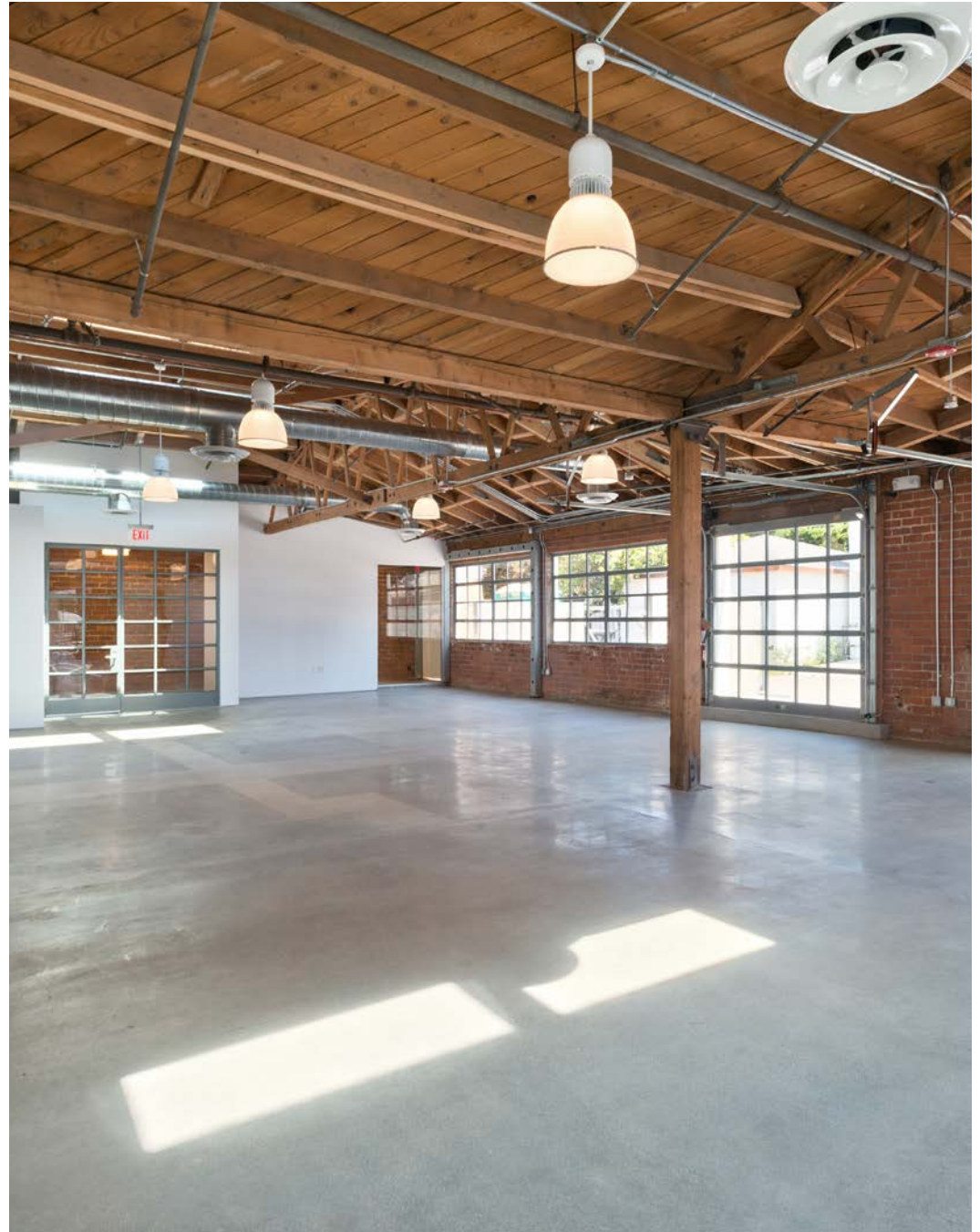
TERM

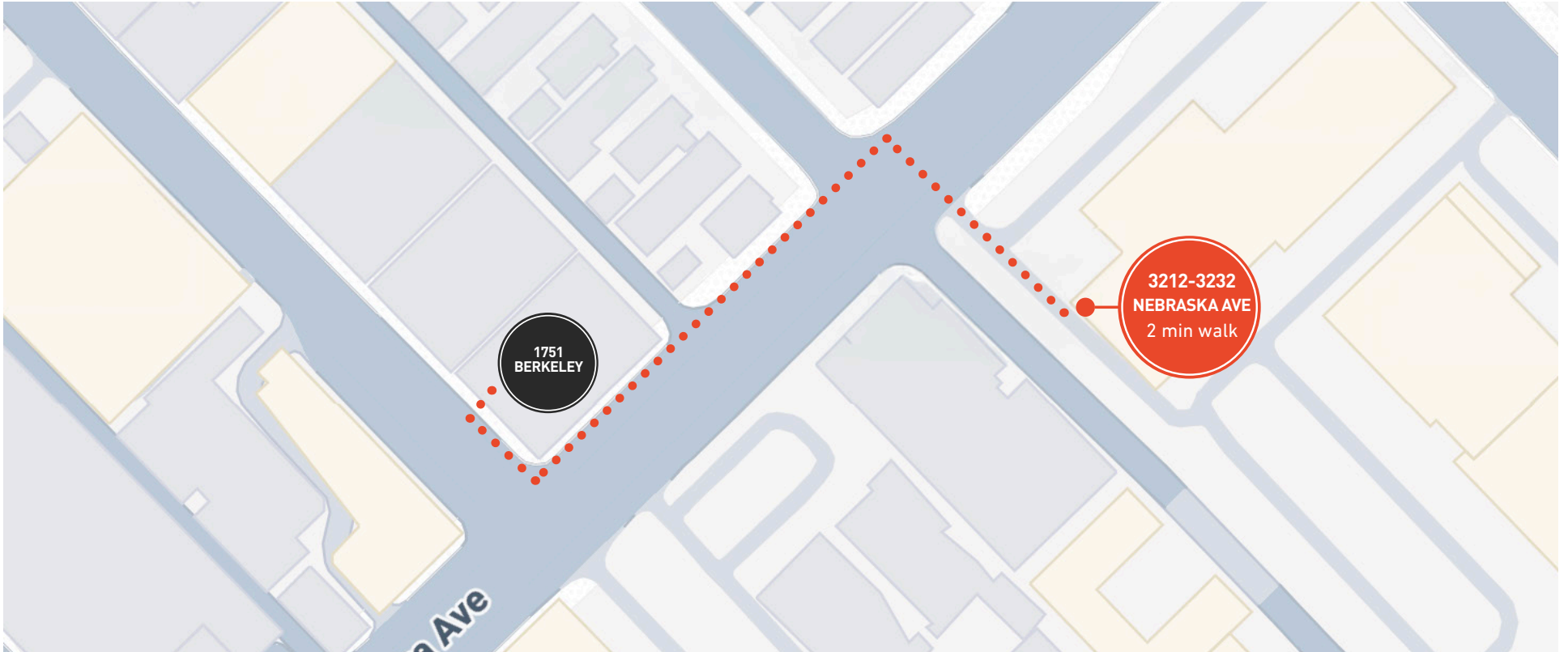
3 - 10 Years

PARKING

Three (3) Spaces On-Site

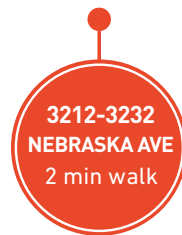
*Up to 100 additional
close-proximity parking
available at prevailing rates
(parking details on following page)*





OPTION 1

- Three (3) On-site parking spaces plus additional spaces nearby

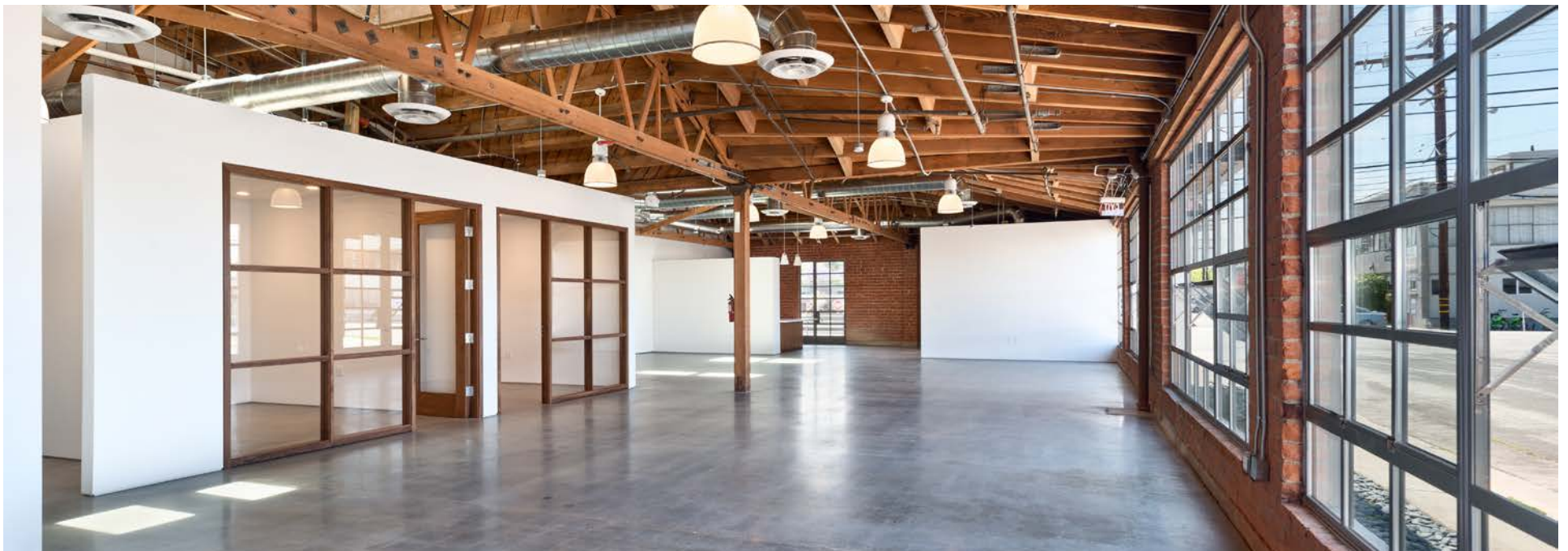
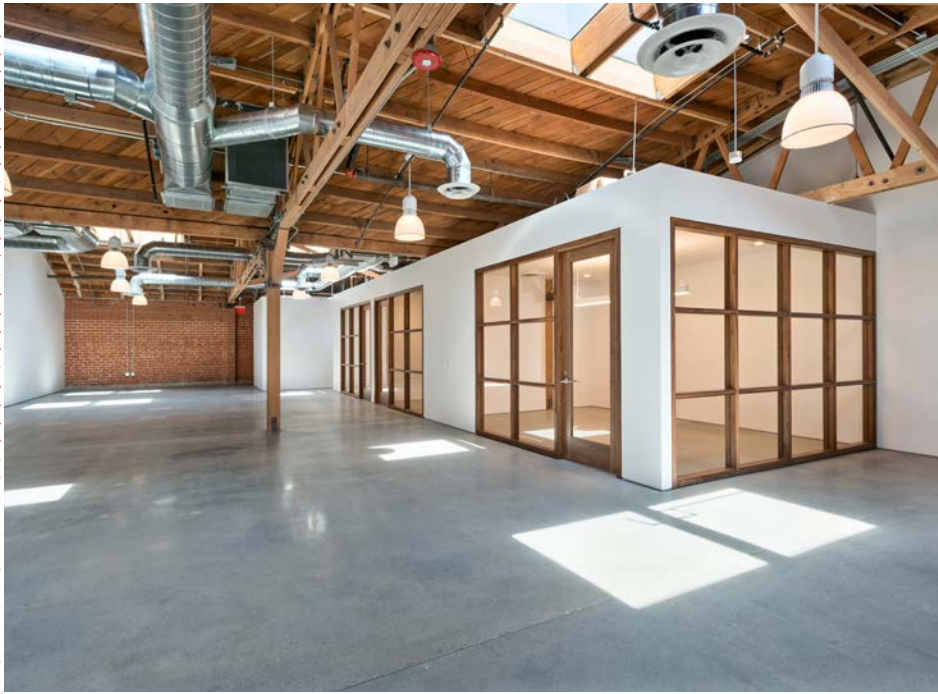


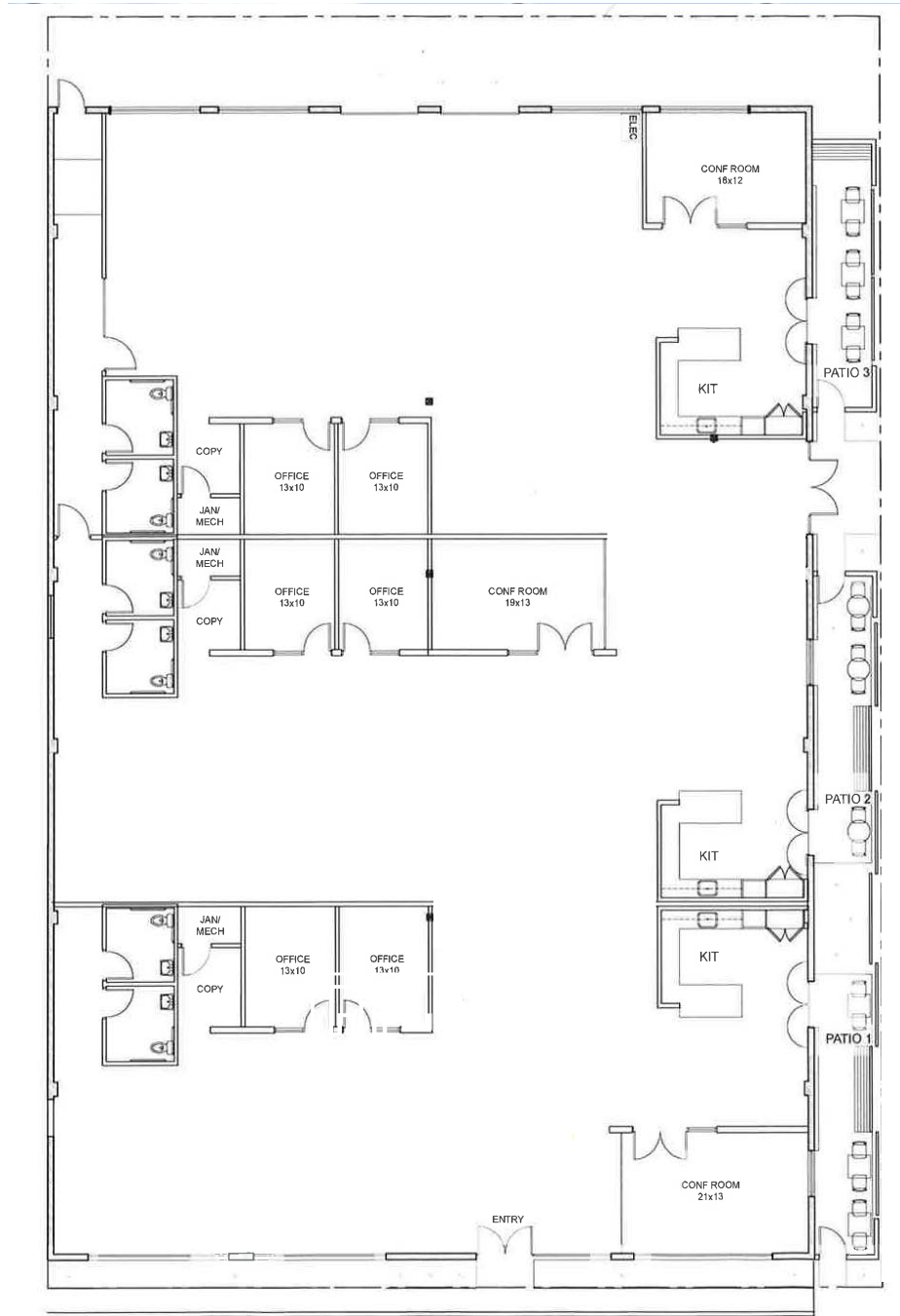
OPTION 2

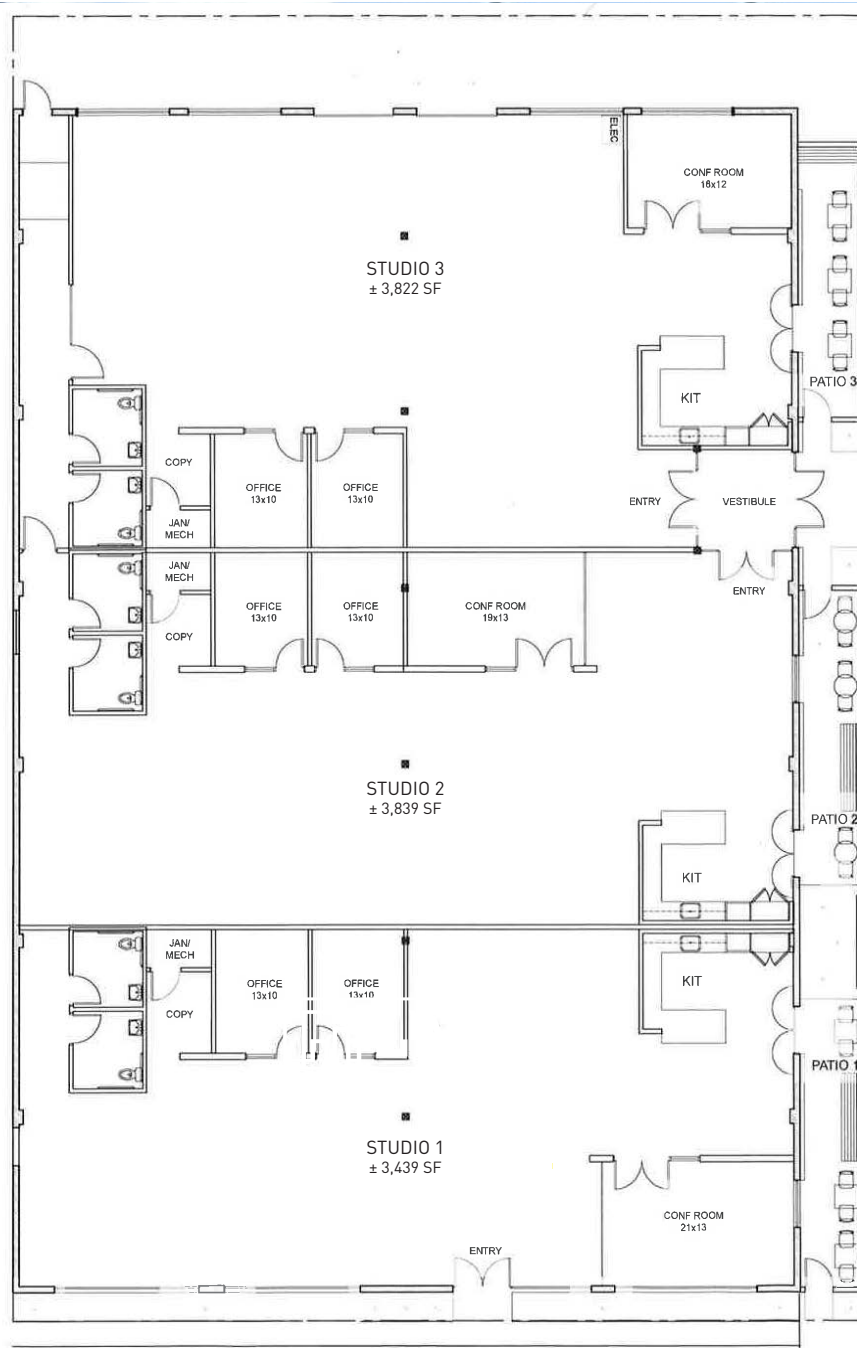
Additional Parking ~ Up to 100 spaces
- 2 Min Walk via Berkeley St & Nebraska Ave
- 0.1 miles







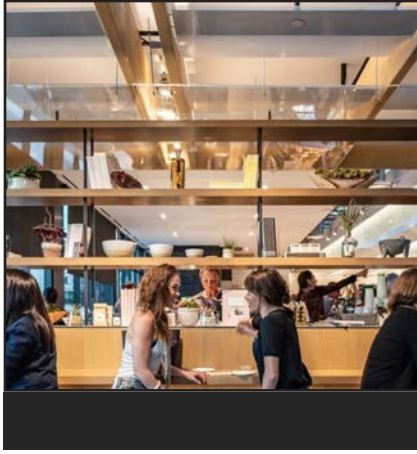




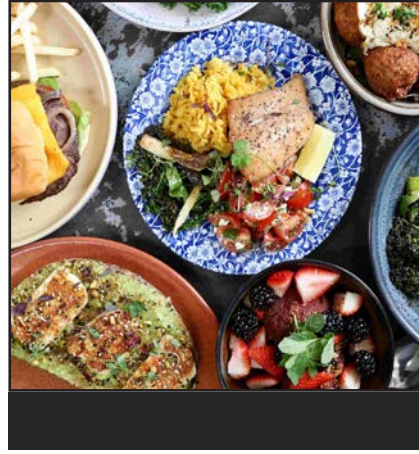


METRO
E-LINE

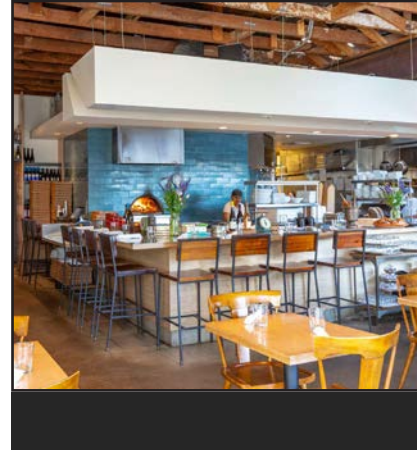
1751
BERKELEY



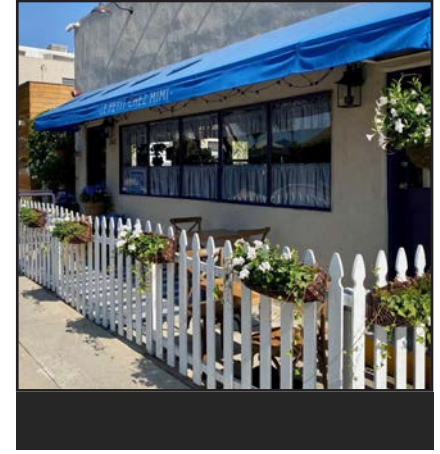
Erewhon Santa Monica is a premier organic market offering elevated groceries, prepared foods, and a refined wellness experience.



Bluey's Kitchen is a relaxed neighborhood spot for fresh, locally sourced food and great coffee, from weekday mornings to weekend brunch.



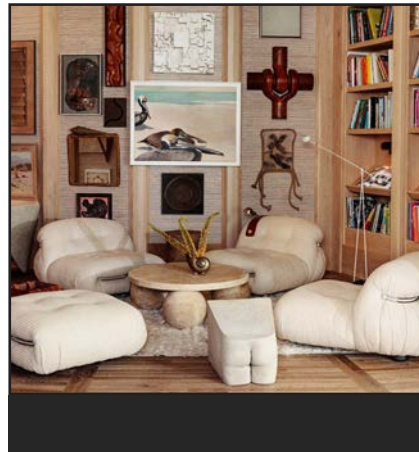
Milo + Olive brings together handcrafted breads, rustic pastries, and classic and seasonal pizzas made with organic, farmers' market ingredients in a warm, all-day neighborhood setting.



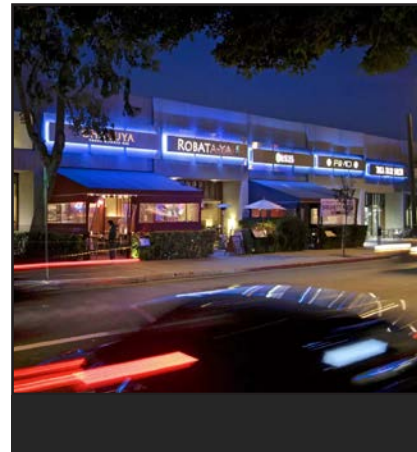
Le Petit Chez Mimi is a charming, family-run bistro serving homestyle French country fare in an unfussy, compact space.



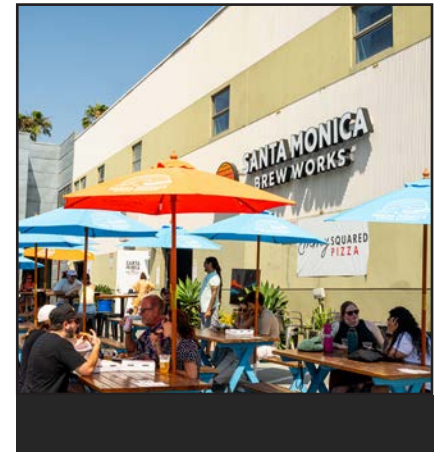
Petitgrain Boulangerie by the sea specializes in croissants, french and mexican pastries baked with california's best grains and produce.



Santa Monica Proper Hotel offers stylish rooms, world-class dining, rooftop views, and lively communal spaces, creating a vibrant coastal escape in the heart of the city.



Sawtelle Japantown is a lively cultural district known for its diverse food scene, eclectic shops, and a vibrant blend of traditions and modern urban culture.



Santa Monica Brew Works is a craft brewery in Santa Monica known for its innovative small-batch beers, relaxed tasting room, and community-focused atmosphere.



George Wilson

PRINCIPAL
gwilson@leewestla.com
310.899.2738
DRE: 02090678

Lindsay Shuford

ASSOCIATE
lshuford@leewestla.com
310.899.2710
DRE: 02231518