

CREATIVE SPACE FOR LEASE



**1710 - 1716 12TH STREET
SANTA MONICA, CA 90404**

PREMISES ± 10,500 SF

RENT \$4.95/SF, MG

TERM 3 - 10 Years

OCCUPANCY 30 Days Following Lease Execution
*Subject to Termination of Existing Lease

ZONING Industrial Conservation (IC)
Verify Use with City

PARKING 22 Parking Spaces On Site (\$175/Space/Month)
(All-day Meters Located Along Olympic Blvd.)

FEATURES

- Property is Located in the Industrial Conservation (IC) Zone of Santa Monica and is Designed for Production and Post Production Companies
- Fully Built Out and Wired Creative Space
- High Exposed Ceilings
- Operable Windows
- Polished Concrete Floors
- Skylights
- Easy Access to Santa Monica Freeway and PCH

CONTACT

James Wilson
310.899.2708
jwilson@leewestla.com
AGT DRE 00883324

Keith Fielding
310.899.2719
kfielding@leewestla.com
AGT DRE 01729915



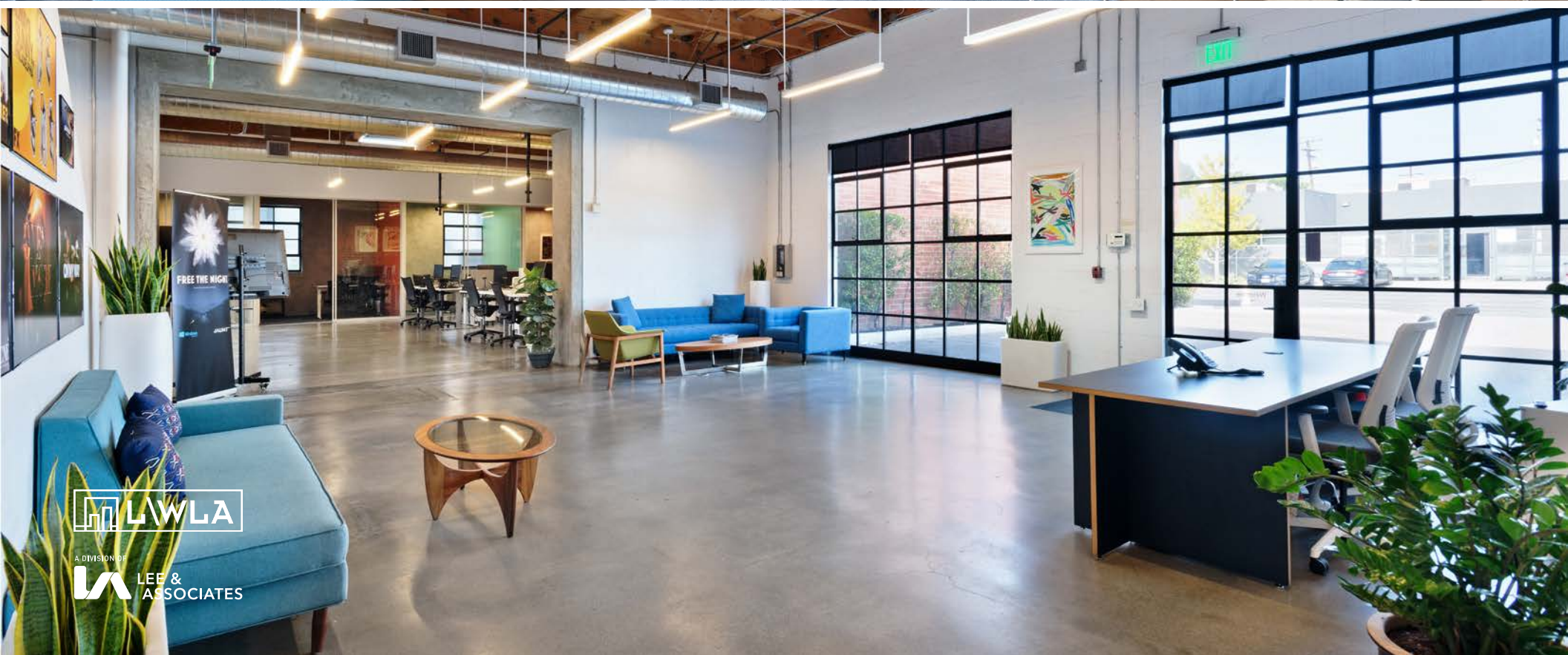
A DIVISION OF
LEE & ASSOCIATES

1508 17th Street, Santa Monica, CA | 310.899.2700
WWW.LEEWESTLA.COM | DRE 01222000

No warranty or representation is made to the accuracy of the foregoing information.
Terms of sale or lease are subject to change or withdrawal without notice.



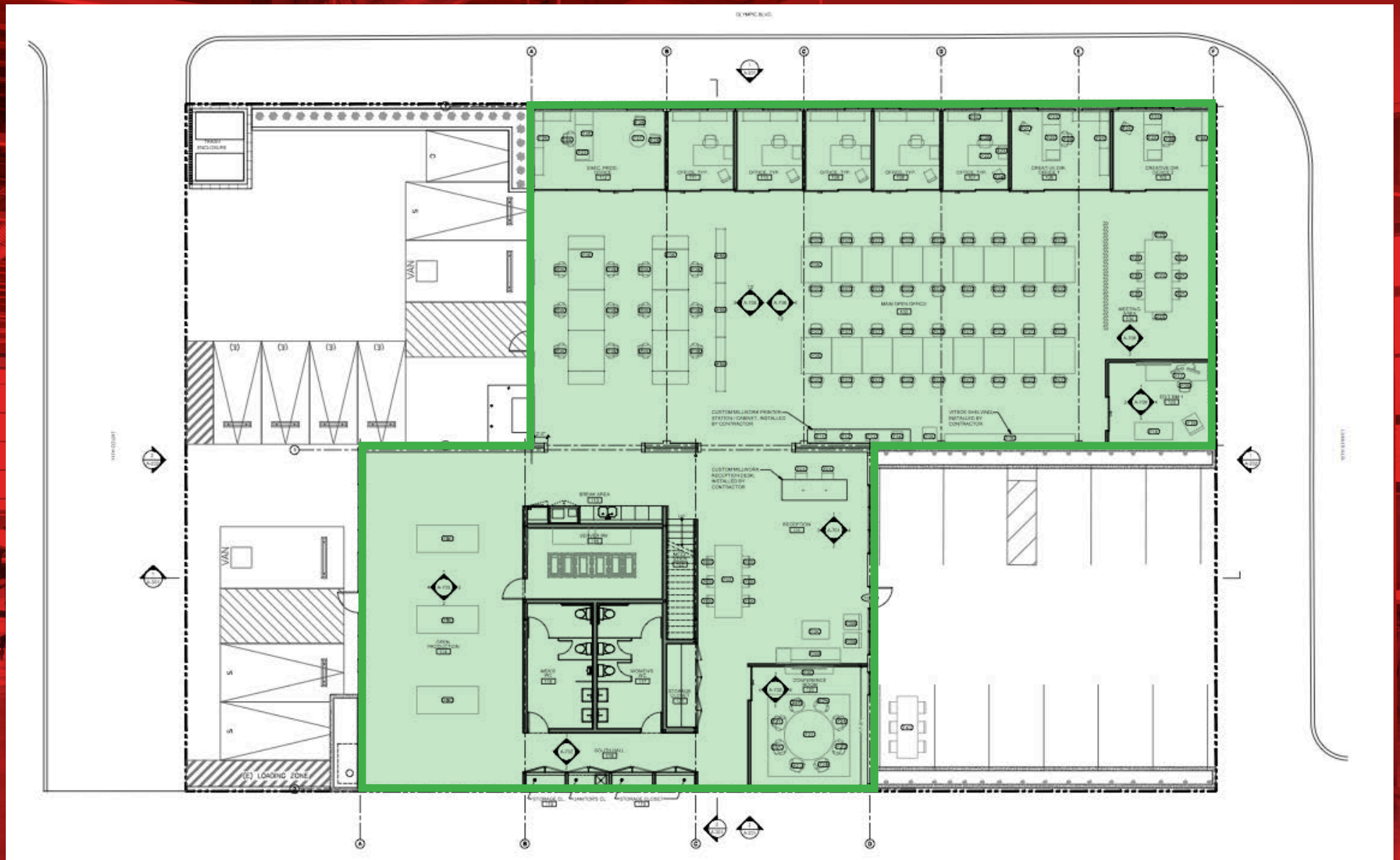
1710 - 1716 12th STREET
SANTA MONICA, CA 90404







FLOOR PLAN - ± 10,500 SF



FLOOR PLAN - MEZZANINE



A DIVISION OF
LEE & ASSOCIATES



1. Bay Cities Deli
2. The Hive Superfood
3. Blue Daisy Cafe
4. Sweetfin Poke
5. Fresh Brothers
6. Bodega Wine Bar
7. Chase Bank
8. Third Street Promenade
9. Starbucks
10. Jersey Mikes
11. Pono Burger
12. VONS
13. Bowl of Heaven
14. The Hive
15. AMC Theater
16. Dennys
17. Benihana
18. Mercado
19. REI
20. Jamba Juice



A DIVISION OF
LEE & ASSOCIATES



Downtown Santa Monica

Subject Property



A DIVISION OF
LEE & ASSOCIATES

Keith Fielding

310.899.2719

kfielding@leewestla.com

AGT DRE 01729915