

COMPASS



Hayes Valley

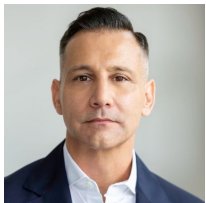
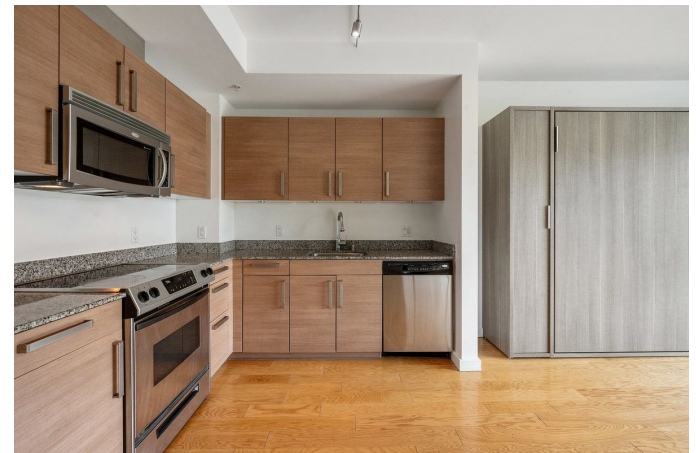
55 Page Street, Unit 514



Welcome to Residence 514 at The Hayes — a bright, stylish high-floor studio in the heart of Hayes Valley, just steps from favorites like Zuni Café, Dumpling Home, and SF Jazz. Perched on the fifth floor with coveted west-facing exposure, this home enjoys sweeping city views and all-day natural light through double-pane windows.

The open layout features a custom-built Murphy bed with integrated storage, rich hardwood floors, and a well-appointed kitchen with Studio Becker cabinetry, granite countertops, and stainless steel appliances. Additional highlights include in-unit laundry, generous closet space, and a spacious bathroom. Residents of The Hayes enjoy a doorman, two elevators, fitness center, rooftop deck with BBQ and lounge areas, secure garage parking, and bike storage.

Perfectly located just moments from Patricia's Green, acclaimed dining, boutique shopping, and cultural destinations, with easy access to public transit and freeways, Residence 514 offers an ideal blend of style, comfort, and urban convenience.

**Todd Montgomery**

DRE#: 01875716
REALTOR®
M: 415.203.6022
todd.montgomery@compass.com

**Marcus Lee**

DRE #: 01354869
REALTOR®
M: 415.999.2022
marcus.lee@compass.com

Montgomery
& Lee Team



Compass is a real estate broker licensed by the State of California operating under multiple entities. License Numbers 01991628, 01527235, 01527365. All material is intended for informational purposes only and is compiled from sources deemed reliable but is subject to errors, omissions, changes in price, condition, sale, or withdrawal without notice. No statement is made as to the accuracy of any description or measurements (including square footage). This is not intended to solicit property already listed. No financial or legal advice provided. Equal Housing Opportunity. Photos may be virtually staged or digitally enhanced and may not reflect actual property conditions.

COMPASS