

THE #1 AGENT IN THE DESERT DELIVERS WITH UNMATCHED EXPERIENCE AND CUTTING EDGE TECHNOLOGY

#1

Palm Springs Life
2025 Top Realtor
Greater Palm Springs

#26

Real Trends Verified
2025 Individual by Volume
California

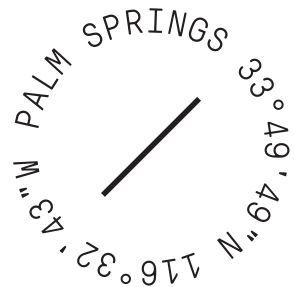
#78

Real Trends The Thousand
2025 Individual by Volume
USA

\$2.1B+

Sales Volume
30+ Years

COMPASS

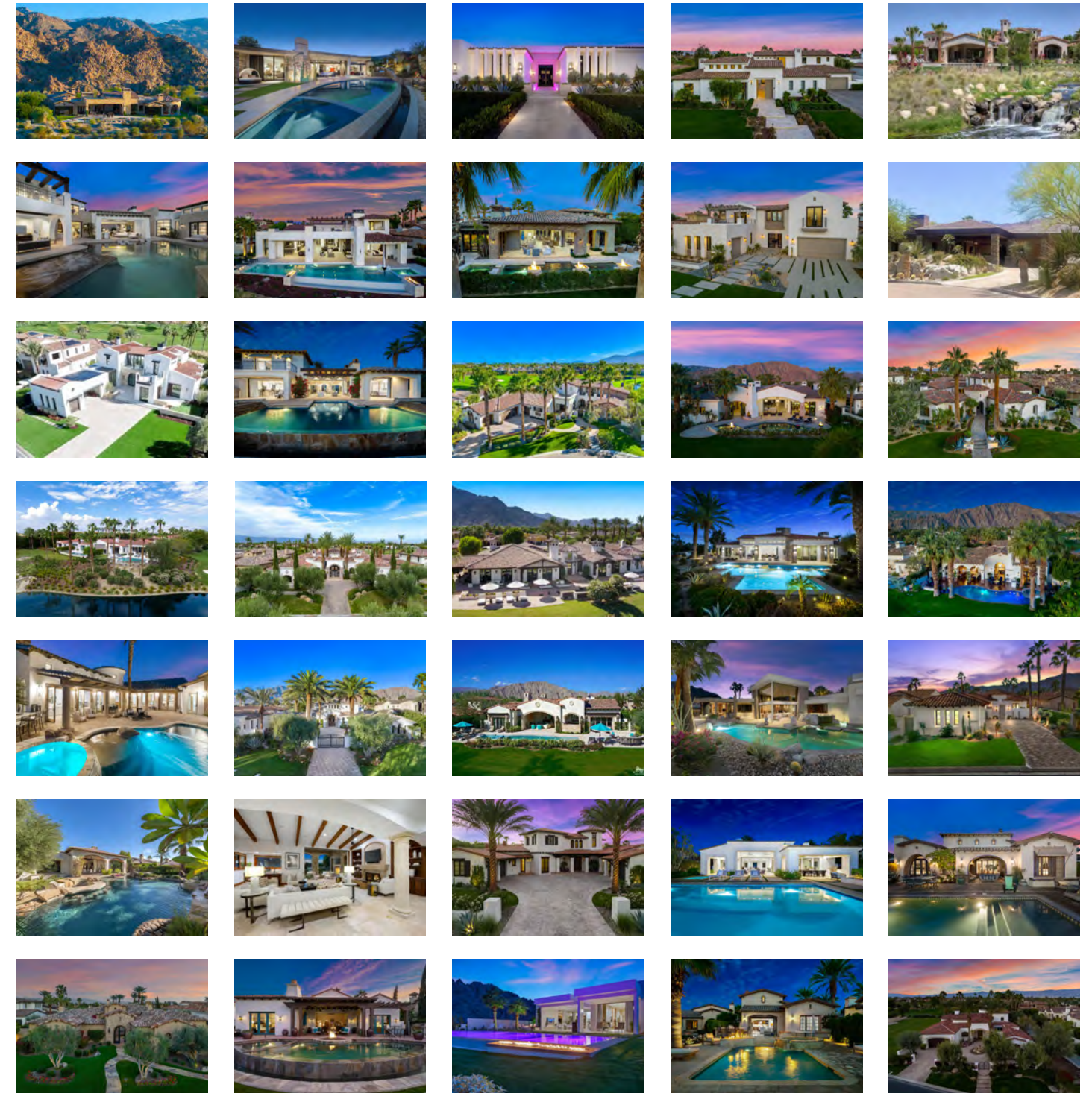


Valery Neuman
Founding Partner | Broker Associate

Cell 760.861.1176
VM 760.776.2311
valery@valeryneuman.com
DRE 01138184

Tour Our Listings and Valley Offerings
at ValeryNeuman.com

VALERY NEUMAN



valeryneuman.com

Compass is a real estate broker licensed by the State of California and abides by Equal Housing Opportunity laws. License Number 01991628. All material presented herein is intended for informational purposes only and is compiled from sources deemed reliable but has not been verified. Changes in price, condition, sale or withdrawal may be made without notice. No statement is made as to accuracy of any description. All measurements and square footages are approximate. Data source for Top Realtor ranking derived from 2025 Palm Springs Life "The Desert's Top Sellers."



COVER HOME

VALERY NEUMAN



La Quinta · The Hideaway
4 Bed including Casita + Theater + Office
4 Full + 2 Half Baths · 6,098 Sq Ft
\$7,395,000 · Furnished · West Facing

La Quinta · Tradition Golf Club
4 Bed + Media Room/5th Bed + Office
4 Full + 1 Half Bath · 6,439 Sq Ft · .90 Acre Lot
\$9,650,000 · Furnished · West Facing

COMPASS



VALERY NEUMAN



La Quinta · The Hideaway
 4 Bed
 4 Full + 2 Half Baths · 5,266 Sq Ft
 \$6,395,000 · Furnished

La Quinta · La Quinta Polo Estates
 6 Bed including Guest House + Den/Media Room
 7 Full + 1 Half Bath · 9,200 Sq Ft
 \$7,500,000 · Furnished · Tennis Court · West Facing

COMPASS



Thermal · Vista Santa Rosa
6 Bed in Main House + 3 Separate Guest Suites
10 Full + 3 Half Bath · 9,131 Sq Ft · 9.29 Acre Lot
\$6,995,000

Bighorn Golf Club



Palm Desert · Bighorn Golf Club
4 Bed including Detached Casita · 4 Full + 1 Half Bath · 3,314 Sq Ft
\$3,195,000 · North Facing