

RÓMA

romacondominium.com

GAVRILOV GROSSO TEAM

AT THE CORCORAN GROUP

25-23 NEWTOWN AVENUE

UNIT 2E

2 Bedrooms

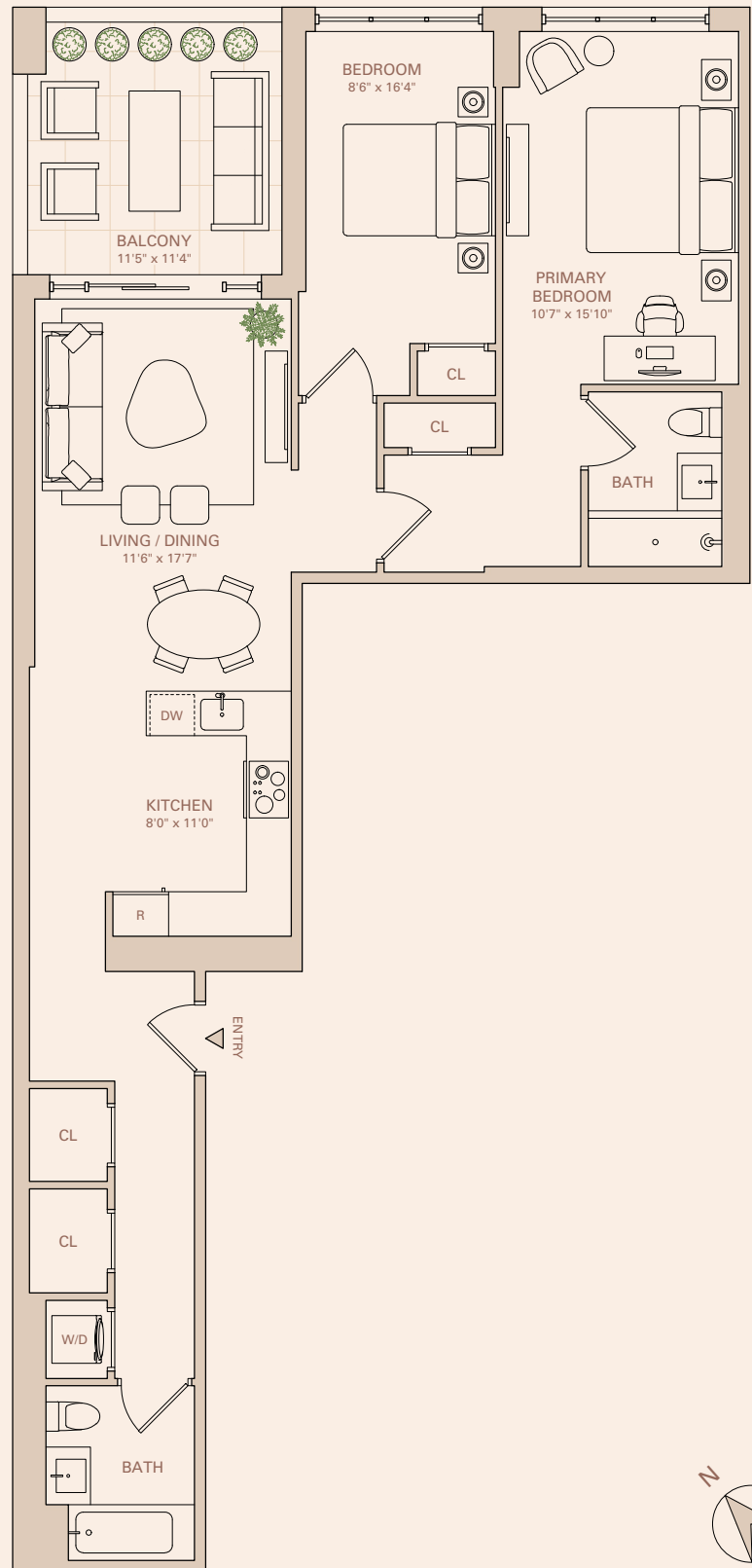
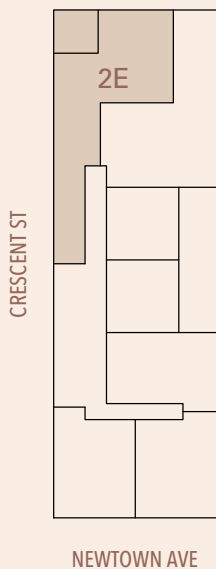
2 Bathrooms

INT: 1144 SQ FT

EXT: 129 SQ FT

RESIDENCE FEATURES

- Custom European Kitchen & Vanity
- Grohe Fixtures
- Italian Porcelain Tile
- Appliances by Bosch
- Washer / Dryer
- Quartz Counters and Backsplash
- Vented Kitchens
- Double-Pane Custom Windows
- European White Oak Floors



Aleksey Gavrilov
agavrilov@corcoran.com
(347) 617-7690

Joseph Grosso
jgrosso@corcoran.com
(917) 328-7824



Exclusive Sales & Marketing by The Gavrilov Grosso Team at The Corcoran Group

The complete offering terms are in an offering plan available from Sponsor. File No. CD25-0053. All dimensions are approximate and subject to the construction variances and tolerances. Plans and dimensions may contain minor variations from floor to floor. Sponsor reserves the right to make changes in accordance with the offering plan. Equal Housing Opportunity.