

# RÓMA

romacondominium.com

**GAVRILOV  
GROSSO  
TEAM**  
AT THE CORCORAN GROUP

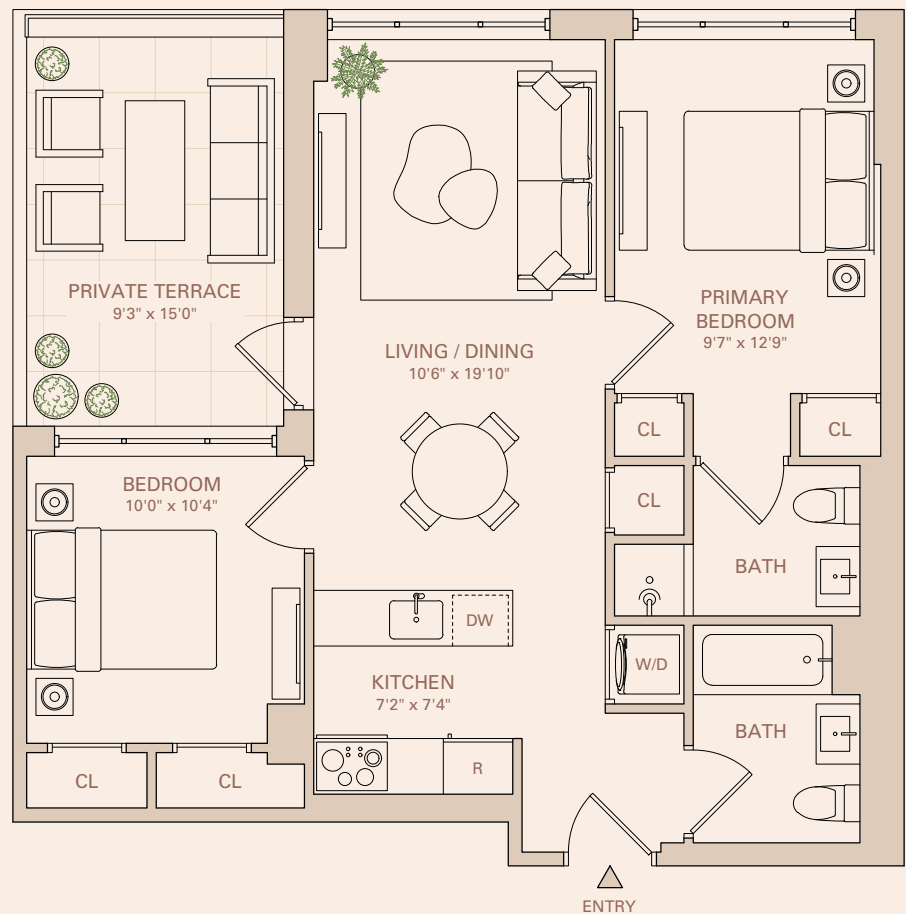
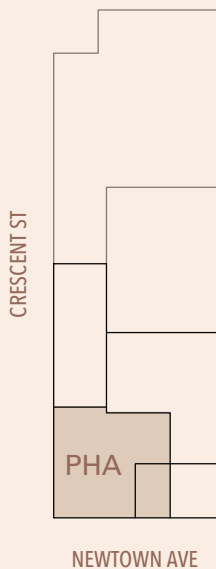
## 25-23 NEWTOWN AVENUE

### UNIT PHA

2 Bedrooms  
2 Bathrooms  
INT: 798 SQ FT  
EXT: 130 SQ FT

### RESIDENCE FEATURES

- Custom European Kitchen & Vanity
- Grohe Fixtures
- Italian Porcelain Tile
- Appliances by Bosch
- Washer / Dryer
- Quartz Counters and Backsplash
- Vented Kitchens
- Double-Pane Custom Windows
- European White Oak Floors



Aleksey Gavrillov  
agavrillov@corcoran.com  
(347) 617-7690

Joseph Grosso  
jgrosso@corcoran.com  
(917) 328-7824



Exclusive Sales & Marketing by The Gavrillov Grosso Team at The Corcoran Group

The complete offering terms are in an offering plan available from Sponsor. File No. CD25-0053. All dimensions are approximate and subject to the construction variances and tolerances. Plans and dimensions may contain minor variations from floor to floor. Sponsor reserves the right to make changes in accordance with the offering plan. Equal Housing Opportunity.